

TECHNICAL SPECIFICATIONS



Lillian S. Wells Hall



**Parker Playhouse
707 NE 8th Street
Fort Lauderdale, FL 33304**

A Broward Center for the Performing Arts Affiliated Venue



The Parker

at Parker Playhouse

707 N.E. 8TH Street
Fort Lauderdale, FL 33304
Main Number 954.764.1441

www.Parkerplayhouse.com www.facebook.com/theparkerplayhouse www.instagram.com/parkerplayhouse

EVENT SERVICES STAFF – Rental and Booking Services

General Manager/V.P. of Operations	Shelly Bradshaw	954.468.2696	sbradshaw@browardcenter.org
Theater Manager	M. Tate Tenorio	954.468.3302	ttenorio@browardcenter.org
Director of Event Services	Pablo Urquilla	954.468.3313	purquilla@browardcenter.org
Director of Operations	Kerry McCloskey	954.414.6905	kmccloskey@browardcenter.org

GUEST EXPERIENCE STAFF – House Management Team, Ticketing, and Catering Services

Guest Services Manager	Ricardo Alfonso	954.468.3285	ralfonso@browardcenter.org
Box Office Representative		954.463.8847	
Ticket Master Representative		800.982.2787	www.ticketmaster.com
Director of Food & Beverage	Kirsty Crumly	954.468.3337	kcrumly@browardcenter.org

PRODUCTION STAFF - Technical Services and Support

The Parker employs Non-Union Stagehands for Self-presentations, Rental presentations, Community presentations and non-yellow card touring productions.

Director of Production-Affiliated Venues	Anton Foresta	954.414.6909	aforesta@browardcenter.org
Technical Supervisor	Robyn Allemand	954.300.3963	rallemand@browardcenter.org
Technical Supervisor	Ed Limia	954.361.1937	elimia@browardcenter.org
Technical Coordinator	Daniel Ginestra	954.289.1779	dginestra@browardcenter.org

BROWARD CENTER FOR THE PERFORMING ARTS

The Parker is managed and operated by the Performing Arts Center Authority at Broward Center for the Performing Arts.

24 Hour Emergency contact	Security Desk	954.468.3323
Monday – Friday 10:00am-6:00pm	Administrative Offices	954.522.5334

SHIPPING INFORMATION

Please notify **The Parker** Production Staff in via email of all shipments, include company and tracking information.

For standard ground 3-5 days:

Parker Playhouse

Attn: Anton Foresta

707 NE 8th Street

Fort Lauderdale, FL 33304

Deliver to M-F 9am-5pm Security office

For overnight/expedited delivery:

Broward Center

Attn: Anton Foresta

201 SW Fifth Avenue

Fort Lauderdale, FL 33312

Deliver to 24 hour Security Desk

MAP & DIRECTIONS – 707 NE 8th Street, Fort Lauderdale FL 33304

The Parker is conveniently located in downtown Fort Lauderdale, equidistant between Dade and Palm Beach Counties and can be reached by:

From Interstate-95:

Exit 29 – W Sunrise Boulevard going eastbound for 2 miles. Turn right (south) onto USI- N Federal Highway (southbound), get into left lane immediately to turn left at 2nd light, onto NE 8th Street continue to median, turn left. Enter Parker Playhouse lot on west side of building.

From S Federal Highway (USI):

Go north on USI- N Federal Highway past Broward Boulevard to NE 8th Street and turn right into Holiday Park. Turn left at the median and proceed to the Parker Playhouse entrance on the west side of the building.

From N Federal Highway (USI):

Go south on USI-N Federal Highway to Sunrise Blvd. and follow signs to USI-N Federal Highway (southbound). Head west along Sunrise Blvd. to USI- N Federal Highway and turn left (south). Turn Left (east) onto NE 8th Street. Turn left at the median and proceed to the Parker Playhouse entrance on the west side of the building.

From Fort Lauderdale Airport:

Take I-595 East to I-95. Exit Broward Boulevard Eastbound. Turn Left (North) onto USI-N Federal highway. Turn Right (East) onto NE 8th Street. Turn left at the median and proceed to the Parker Playhouse entrance on the west side of the building.

To Backstage Parking:

Cast, Company Management, and crew parking

Enter Parker Playhouse campus via the west side entrance from NE 8th Street. Continue to the north side of the building. Park in loading dock area. Stage door is located next to roll up door on the northeast corner of building

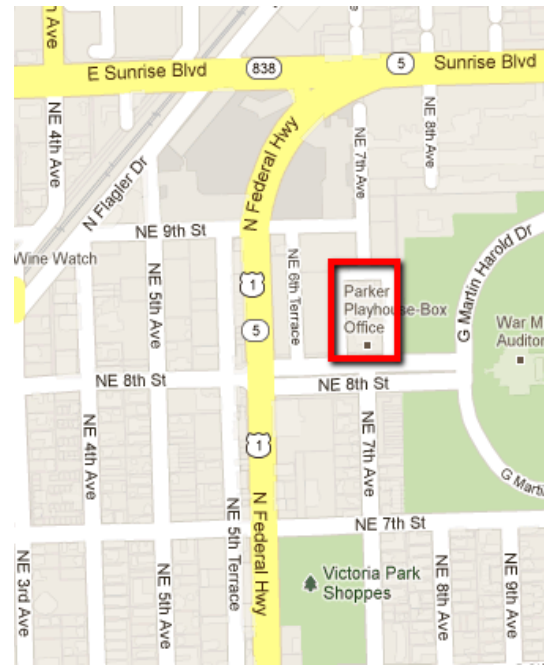
Truck and Bus Parking:

Enter Parker Playhouse campus via the EAST side entrance from NE 8th Street. Continue to the north side of the building. Truck and bus parking are on the northeast corner of the building. Loading dock door and stage door are located facing east on the northeast side of the building. Shore power is available.

GPS Coordinates:

+26° 8' 3.92" - N

-80° 8' 10.44" - W



THE PARKER Lillian S. Wells Hall

Capacity = 1,147																		Indicates Single Step										Indicates Two Steps																			
Even Numbered Seats																		Odd Numbered Seats																													
ZZ																			Sound/Lighting/AV Control																				ZZ	37							
Z	1	4	6	8	10	12	14	16	18	20	22	24	26	28	30	32	34	36											38	40	39	37	35	33	31	29	27	25	23	21	19	17	15	13	11	9	7
Y	1	4	6	8	10	12	14	16	18	20	22	24	26	28	30	32	34	36	38	40	39	37	35	33	31	29	27	25	23	21	19	17	15	13	11	9	7	5	3	1	Y	40					
X	1	4	6	8	10	12	14	16	18	20	22	24	26	28	30	32	34	36	38	40	42	44	46	48	50	52	54	56	58	60	62	64	66	68	70	72	74	76	78	80	82	84	86	88	90	X	52
W	2	4	6	8	10	12	14	16	18	20	22	24	26	28	30	32	34	36	38	40	42	44	46	48	50	52	54	56	58	60	62	64	66	68	70	72	74	76	78	80	82	84	86	88	90	W	51
V	1	4	6	8	10	12	14	16	18	20	22	24	26	28	30	32	34	36	38	40	42	44	46	48	50	52	54	56	58	60	62	64	66	68	70	72	74	76	78	80	82	84	86	88	90	V	52
U	1	4	6	8	10	12	14	16	18	20	22	24	26	28	30	32	34	36	38	40	42	44	46	48	50	52	54	56	58	60	62	64	66	68	70	72	74	76	78	80	82	84	86	88	90	U	53
T	1	4	6	8	10	12	14	16	18	20	22	24	26	28	30	32	34	36	38	40	42	44	46	48	50	52	54	56	58	60	62	64	66	68	70	72	74	76	78	80	82	84	86	88	90	T	52
S	1	4	6	8	10	12	14	16	18	20	22	24	26	28	30	32	34	36	38	40	42	44	46	48	50	52	54	56	58	60	62	64	66	68	70	72	74	76	78	80	82	84	86	88	90	S	53
R	1	4	6	8	10	12	14	16	18	20	22	24	26	28	30	32	34	36	38	40	42	44	46	48	50	52	54	56	58	60	62	64	66	68	70	72	74	76	78	80	82	84	86	88	90	R	56
Q	1	4	6	8	10	12	14	16	18	20	22	24	26	28	30	32	34	36	38	40	42	44	46	48	50	52	54	56	58	60	62	64	66	68	70	72	74	76	78	80	82	84	86	88	90	Q	57
P	2	4	6	8	10	12	14	16	18	20	22	24	26	28	30	32	34	36	38	40	42	44	46	48	50	52	54	56	58	60	62	64	66	68	70	72	74	76	78	80	82	84	86	88	90	P	54
O	1	4	6	8	10	12	14	16	18	20	22	24	26	28	30	32	34	36	38	40	42	44	46	48	50	52	54	56	58	60	62	64	66	68	70	72	74	76	78	80	82	84	86	88	90	O	57
N	1	4	6	8	10	12	14	16	18	20	22	24	26	28	30	32	34	36	38	40	42	44	46	48	50	52	54	56	58	60	62	64	66	68	70	72	74	76	78	80	82	84	86	88	90	N	56
M	Accessible Seating - Loose/companion																												Accessible Seating - Loose/companion										28 ADA	M	48						
L	Accessible Seating - Loose/companion																												Accessible Seating - Loose/companion											L	20						
K	1	4	6	8	10	12	14	16	18	20	22	24	26	28	30	32	34	36	38	40	42	44	46	48	50	52	54	56	58	60	62	64	66	68	70	72	74	76	78	80	82	84	86	88	90	K	53
J	1	4	6	8	10	12	14	16	18	20	22	24	26	28	30	32	34	36	38	40	42	44	46	48	50	52	54	56	58	60	62	64	66	68	70	72	74	76	78	80	82	84	86	88	90	J	50
H	2	4	6	8	10	12	14	16	18	20	22	24	26	28	30	32	34	36	38	40	42	44	46	48	50	52	54	56	58	60	62	64	66	68	70	72	74	76	78	80	82	84	86	88	90	H	47
G	2	4	6	8	10	12	14	16	18	20	22	24	26	28	30	32	34	36	38	40	42	44	46	48	50	52	54	56	58	60	62	64	66	68	70	72	74	76	78	80	82	84	86	88	90	G	44
F	2	4	6	8	10	12	14	16	18	20	22	24	26	28	30	32	34	36	38	40	42	44	46	48	50	52	54	56	58	60	62	64	66	68	70	72	74	76	78	80	82	84	86	88	90	F	41
E	2	4	6	8	10	12	14	16	18	20	22	24	26	28	30	32	34	36	38	40	42	44	46	48	50	52	54	56	58	60	62	64	66	68	70	72	74	76	78	80	82	84	86	88	90	E	38
D	2	4	6	8	10	12	14	16	18	20	22	24	26	28	30	32	34	36	38	40	42	44	46	48	50	52	54	56	58	60	62	64	66	68	70	72	74	76	78	80	82	84	86	88	90	D	33
C	2	4	6	8	10	12	14	16	18	20	22	24	26	28	30	32	34	36	38	40	42	44	46	48	50	52	54	56	58	60	62	64	66	68	70	72	74	76	78	80	82	84	86	88	90	C	28
B	2	4	6	8	10	12	14	16	18	20	22	24	26	28	30	32	34	36	38	40	42	44	46	48	50	52	54	56	58	60	62	64	66	68	70	72	74	76	78	80	82	84	86	88	90	B	21
A	2	4	6	8	10	12	14	16	18	20	22	24	26	28	30	32	34	36	38	40	42	44	46	48	50	52	54	56	58	60	62	64	66	68	70	72	74	76	78	80	82	84	86	88	90	A	14
																		Stage																				1147									

GENERAL INFORMATION

House and seating

Capacity: 1147 including removable Accessibility seating, with companion seat options

Continental Style seating, two aisles; house right and house left, **no balcony**.

Lobbies: Donald S. Sussman Grand Lobby - on the southern façade and public entrance
Slattery Family Foundation East Lobby & Rotunda
Mary Jane Harlow Charitable Trust West Lobby & Rotunda

Public Entrance

Located at the south end of the building with entrances both east and west

Backstage

Stagedoor is located on the Northeast corner of the building next to roll up door.

Greenroom located on the West side of the theater (stage right) with access to backstage and West lobby

BACKSTAGE CREDENTIALING POLICY

To increase the safety of our backstage environment, the Parker Playhouse will require all staff, stagehands, vendors, performers, and their respective representatives to have and display a credential at all times in any of our backstage areas.

Credential Criteria

Credentials are to be produced, maintained, distributed, and collected by the entity performing at Parker Playhouse. Although it would be optimal to have every individual's name and photo on a credential, this may not be feasible in all situations. At a minimum, the credential must have the following characteristics:

- Credit card size or larger and double sided
- Include the name and logo of their organization
- Plastic or laminated
- Affixed to a belt-style clip or lanyard
- Be difficult to easily replicate

Displaying and Wearing Credential

- Present credential at the Security Desk
- Conspicuously wear credential while backstage
- Everyone must have their own credential
- Provide a sample copy of credentials to Parker Playhouse Production and Security in advance
- **Credentials are NEVER expected to be worn on stage**

Exceptions

- Headliner artists who remain on tour buses or who arrive immediately prior to showtime are not expected to display/wear a credential
- Children performing in recitals are not expected to display/wear a credential, but must be accompanied and escorted by someone wearing credentials

TRUCK, BUS, AND VEHICLE PARKING

Cast, Company Management and Crew Parking

Enter Parker Playhouse campus via the west side entrance from NE 8th Street. Continue to the north side of the building and follow the bend towards the east. Park in loading dock area. Stage door is located on the north/east corner of the building next to roll up door.

Truck and Bus Parking:

Enter Parker Playhouse campus via the EAST side entrance from NE 8th Street. Continue to the north side of the building. Truck and bus parking are located on the northeast corner of the building. Stagedoor and roll up door are located facing east on the northeast side of the building.

Four (4) shore power connections are available.

Package Deliveries

All deliveries MUST be advanced with production staff. Overnight/next-day deliveries may not be accepted

LOADING DOCK

Loading is GROUND/STREET LEVEL – ramp required for unloading trucks

Loading dock located at the Northeast corner of the building

Loading dock door: 10' tall by 10' wide, facing east.

Loading dock storage: 24' wide by 18' – 7" long by 17' high **located off stage left and open to stage**

(4) Shore Power connections available - 250v/50amp NEMA 14-50R Connections are on 24/7

NO RAMPS or FORKLIFT in house, please advance needs for loading and off-loading large trucks with production staff

Lillian S Wells Hall Technical Information

Current as of 02/02/25

THEATRICAL EQUIPMENT

STAGE SPECIFICATIONS

The Lillian S. Wells Hall features a Robbins Bio Cushion Classic Subfloor system (Floating) consisting of 33/32" x 2-1/4" #2 grade MFMA maple with 2 layers of 1/2" CDX Plywood and 3/4" EPDM rubber shock pads attached

The floor has a 300lbs per sq/ft maximum load rating

STAGE AND PROSCENIUM

HEIGHT OF PROSCENIUM	19' - 8"
WIDTH OF PROSCENIUM	39' - 10"
DEPTH OF STAGE (From Plaster Line)	34' - 8"
DEPTH OF STAGE (From Thrust Apex)	42'
CURTAIN LINE TO STAGE THRUST	6' - 5"
WIDTH OF STAGE	61'6"
STAGE LEFT WING SPACE	11' - 5" (30' including loading dock)
STAGE RIGHT WING SPACE	8' to locking rail

STAGE THRUST / APRON

APRON DEPTH From Plaster Line	6' - 3"
APRON DEPTH From Downstage Automated House Curtain	3' - 10'
APRON WIDTH	44'
HEIGHT OF STAGE (Seating level to stage level)	3' 6"

LOADING DOCK

Loading is GROUND/STREET LEVEL – ramp required for unloading trucks

Loading dock located at the Northeast corner of the building

Loading dock door: 10' tall by 10' wide, facing east.

Loading dock storage: 24' wide by 18' – 7" long by 17' high **located off stage left and open to stage**

4 Shore Power 250v/50amp NEMA 14-50R Connections are on 24/7

NO RAMPS or FORKLIFT in house, please advance needs for loading and off-loading large trucks with production staff

RIGGING SPECIFICATIONS

The counterweight system is single purchase hung over grid system with (49) hand operated line sets and one ground level operating position.

Five l' wells are located at center, 10' -3" off center, and 20' -7" off center.

Grid hatch located off stage left, 8'x8' opening. Overhead I-beam available for chain stacking motor

LINE SETS AVAILABLE	(49) sets (includes 2 side tab sets) 6" centers (32) Single Pipe Batten (17) Truss Pipe Batten
GRID HEIGHT	44'10"
TRAVEL DISTANCE (max pipe out trim)	42'10"
MAX WEIGHT PER ARBOR	1260lbs (pipe weight varies) 750lb working limit
TOTAL WEIGHT	25000lbs (13000lbs available)
LENGTH OF BATTENS	Single Pipe Batten – 47' Truss Batten – 48' Side Tab Batten – 30'
DIAMETER OF BATTENS	1.5"

FORESTAGE RIGGING POINTS

The Lillian S Wells Hall includes (6) 1000lb rigging points downstage and parallel to the proscenium wall. Points can accommodate up to 40' of lighting truss up to 6000lbs between hoists.

All rigging points include permanent ½ ton I-Beam clamp at location indicated.

(4) house chain hoists are Stagemaker SR20 ½ Ton BGV-D8+ double break body up. House chain hoists are permanently mounted and are not movable.

Chain hoists are controlled and powered via an (8) channel Skjonberg Control system with 8 channel pendant connected downstage left.

Power Connector: Nema L16-20R

Control Connector: Nema L14-20

Please advance needs of house AP lighting truss with production staff (center 4 points)

Rigging Point	Distance from Proscenium	Distance off Center	Chain Hoist	Control
LX Tour Truss SR	6' -8 ¼"	17' -11"	Tour/Rental	CH 2
LX House Truss SR 1	6' -8 ¼"	10' -9"	Stagemaker ½ Ton	CH 3
LX House Truss SR 2	6' -8 ¼"	3' -7"	Stagemaker ½ Ton	CH 4
LX House Truss SL 1	6' -8 ¼"	3' -7"	Stagemaker ½ Ton	CH 5
LX House Truss SL 2	6' -8 ¼"	10' -9"	Stagemaker ½ Ton	CH 6
LX Tour Truss SL	6' -8 ¼"	17' -11"	Tour/Rental	CH 7

(1) Stagemaker SR20 ½ Ton BGV-D8+ body up is mounted from grid SL for stacking & unstacking

HOUSE TRAVELER *No Guillotine*

The Lillian S Wells Hall house curtain is an automated H&H 454VS Variable Speed Curtain Machine. It travels at a maximum of 130 feet per minute and a minimum of 26 feet per minute. Split in two halves with a two-foot overlap, it is located 1' downstage from the smoke pocket. The house curtain is permanent and cannot be moved. House Curtain only travels and does NOT guillotine. House curtain speed and control located downstage right, house mix position, and lighting booth.

The Parker Lineset Schedule 2025

Dist.	L/S	Description	Type	Length	P/W Bricks	Dr/W Bricks	Total W	Live Cap	Arbor Cap	Notes
-12	0	Main Traveler	Automated						1260lbs	Travel only / NO Guillotine
										Variable Speed / Split at Center
0' 0"	0	Plaster Line			H=14lb	F=28lb				
0' 0"	0	Fire Curtain								Guillotine
1'	1	Main Black Out/proscemium Border	Pipe Batten	47'	4H	17H	294 lbs	966 lbs	1260 lbs	Splits at Center
1' 6"	2	Prosc. Legs	Pipe Batten	47'	4H	3H	98.00 lbs	1162.00 lbs	1260.00 lbs	19' Off Center
2' 6"	3		Truss Batten	48"	15H		210.00 lbs	1050.00 lbs	1260.00 lbs	
3' 6"	4	1st Electric	Truss Batten	48"	15H	25H	560.00 lbs	700.00 lbs	1260.00 lbs	
4' 6"	5		Pipe Batten	47'	4H		56.00 lbs	1204.00 lbs	1260.00 lbs	
5'	6	#1 Border	Pipe Batten	47'	4H	7H	154.00 lbs	1106.00 lbs	1260.00 lbs	
5' 6"	7	SR #1 Legs	Pipe Batten	47'	4H	1H	70.00 lbs	1190.00 lbs	1260.00 lbs	18' Off Center
6'	8	SL #1 Legs	Pipe Batten	47'	4H	1H	70.00 lbs	1190.00 lbs	1260.00 lbs	18' Off Center
6' 6"	9	SL Side Tabs	Pipe Batten		4H	6H	140.00 lbs	1120.00 lbs	1260.00 lbs	
7'	10		Pipe Batten	47'	4H		56.00 lbs	1204.00 lbs	1260.00 lbs	
7' 6"	11		Pipe Batten	47'	4H		56.00 lbs	1204.00 lbs	1260.00 lbs	
8' 6"	12	2nd Electric	Truss Batten	48'	15H	30H	630.00 lbs	630.00 lbs	1260.00 lbs	
9' 6"	13		Pipe Batten	47'	4H		56.00 lbs	1204.00 lbs	1260.00 lbs	
10'	14	#2 Border	Pipe Batten	47'	4H	7H	154.00 lbs	1106.00 lbs	1260.00 lbs	
10' 6"	15	SR #2 Legs	Pipe Batten	47'	4H	4H	98.00 lbs	1162.00 lbs	1260.00 lbs	18' Off Center
11' 6"	16		Truss Batten	48'	15H		210.00 lbs	1050.00 lbs	1260.00 lbs	18' Off Center
12'	17	SR Side Tabs	Pipe Batten		4H	6H	140.00 lbs	1120.00 lbs	1260.00 lbs	
12' 6"	18		Pipe Batten	47'	4H		56.00 lbs	1204.00 lbs	1260.00 lbs	
13' 6"	19	3rd Electric	Truss Batten	48'	15H	19F 2H	770.00 lbs	490.00 lbs	1260.00 lbs	
14' 6"	20		Pipe Batten	47'	4H		56.00 lbs	1204.00 lbs	1260.00 lbs	
15'	21	#3 Border	Pipe Batten	47'	4H	7H	154.00 lbs	1106.00 lbs	1260.00 lbs	
15' 6"	22	#3 Legs	Truss Batten	48'	15H	3H	252.00 lbs	1008.00 lbs	1260.00 lbs	18' Off Center
16'	23		Truss Batten	48'	15H		210.00 lbs	1050.00 lbs	1260.00 lbs	
16' 6"	24	Projection Screen	Pipe Batten	47'	4H	4F 1H	182.00 lbs	1078.00 lbs	1260.00 lbs	16' x 9'
17'	25	Midstage Black Out	Truss Batten	48'	15H	10H	350.00 lbs	910.00 lbs	1260.00 lbs	Split at Center
17' 6"	26		Pipe Batten	47'	4H		56.00 lbs	1204.00 lbs	1260.00 lbs	
18' 6"	27	4th Electric	Truss Batten	48'	15H	16F	658.00 lbs	602.00 lbs	1260.00 lbs	
19' 6"	28		Pipe Batten	47'	4H		56.00 lbs	1204.00 lbs	1260.00 lbs	
20' 6"	29		Pipe Batten	47'	4H		56.00 lbs	1204.00 lbs	1260.00 lbs	
21'	30	#4 Border	Pipe Batten	47'	4H	7H	154.00 lbs	1106.00 lbs	1260.00 lbs	
21' 6"	31		Truss Batten	48'	15H		210.00 lbs	1050.00 lbs	1260.00 lbs	
22'	32	#4 Legs	Pipe Batten	47'	4H	3H	98.00 lbs	1162.00 lbs	1260.00 lbs	18' Off Center
22' 6"	33		Truss Batten	48'	15H		210.00 lbs	1050.00 lbs	1260.00 lbs	
23'	34		Pipe Batten	47'	4H		56.00 lbs	1204.00 lbs	1260.00 lbs	
24'	35	5th Electric	Truss Batten	48'	15H	22F	826.00 lbs	434.00 lbs	1260.00 lbs	
25'	36		Pipe Batten	47'	4H		56.00 lbs	1204.00 lbs	1260.00 lbs	
25' 6"	37		Truss Batten	48'	15H		210.00 lbs	1050.00 lbs	1260.00 lbs	
26'	38		Pipe Batten	47'	4H		56.00 lbs	1204.00 lbs	1260.00 lbs	
26' 6"	39		Truss Batten	48'	15H		210.00 lbs	1050.00 lbs	1260.00 lbs	
27'	40	#5 Border	Pipe Batten	47'	4H	7H	154.00 lbs	1106.00 lbs	1260.00 lbs	Split at Center
27' 6"	41	#5 Legs	Pipe Batten	47'	4H	3H	98.00 lbs	1162.00 lbs	1260.00 lbs	18' Off Center
28'	42	3/4 Blackout / Star Drop	Pipe Batten	47'	4H	1F 12 H	252.00 lbs	1008.00 lbs	1260.00 lbs	
28' 6"	43	Black Scrim	Pipe Batten	47'	4H	2F 1 H	126.00 lbs	1134.00 lbs	1260.00 lbs	
32' 6"	49	Rear Black	Pipe Batten	45'	4H	12H	224.00 lbs	1036.00 lbs	1260.00 lbs	Mulled out 12 inches
29' 6"	44	Cyc Electric	Truss Batten	48'	15H	8H	322.00 lbs	938.00 lbs	1260.00 lbs	Mulled out 6 inches
32'	48	Cyc w/Legs	Pipe Batten	45'	4H	9H	182.00 lbs	1078.00 lbs	1260.00 lbs	Mulled out 12 inches / 16' Off Center
30' 6"	45		Truss Batten	45'	15H		210.00 lbs	1050.00 lbs	1260.00 lbs	Mulled out 12 inches
31'	46	#6 Border	Pipe Batten	45'	2F 1H	7H	168.00 lbs	1092.00 lbs	1260.00 lbs	Mulled out 12 inches
31' 6"	47		Truss Batten	45'	15H		210.00 lbs	1050.00 lbs	1260.00 lbs	Mulled out 12 inches
34' 6"		Upstage Wall								

SOFT GOODS INVENTORY

Description	Units	Height	Width
Main Red House Curtain	2	25'4"	25'6"
Main DS Split Black Drape 25% Fullness	2	22'	24'
Borders	6	10'	47'
Legs	12	22'	8'
Legs (Side tabs)	10	22'	8'
Legs (Proscenium)	2	24'	6'
Split Black Drape Mid & Upstage	4	21'	24'
White Filled Scrim Cyclorama	1	22'	44'
Black Shark tooth Scrim	1	21'	44'
Fiber Optic Star Drop	1	21'	36'

GENIE LIFT

(1) 30' Genie AWP 30 DC (battery operated)

PROPS

- (50) Gray Padded Chairs
- (20) Manhasset Music Stands w/clip on rechargeable LED lights
- (6) 32" High Black Wooden Stools
- (4) 3' x 8' Tables
- (2) 3' x 6' Tables
- (2) 1.5' x 6' Tables
- (2) 2' x 5' Tables

RISERS

- (12) Staging Dimension 4'x8' platforms black non-skid
 - (36) 8" self-leveling legs
 - (36) 12" self-leveling legs
 - (36) 16" self-leveling legs
 - (40) 24" self-leveling legs
 - (08) 36" self-leveling legs
 - (36) Locking wheels (can create FOUR 8'x8' rolling risers)
 - (36) 12" rolling leg sleeves
 - (36) 24" rolling leg sleeves
 - (05) 8' long x 42" high black steel guard rails with 2" chairstop
 - (02) 4' long x 42" high black steel guard rails with 2" chairstop
- Black skirting available for all riser heights*

STEP UNITS

- (3) Staging Dimensions Free standing 2 step stair units with removable railings, accommodates risers up to 24"
- (1) Staging Dimensions 5 step adjustable stair unit with railings, accommodates risers up to 36"
- (2) Wooden black single step stair units, accommodates risers up to 16"

THEATRICAL AV

**** The Parker enforces a strict DB limit ****

105db A weighted average over (1) minute

Measured by calibrated iSemcom EMX-7150 measurement mic through Smart SPL software

HOUSE AUDIO CONSOLES

FOH: Avid Venue S6L-24C with E6L 112 engine, Stage 64 loaded with 64 in x 32 out, Waves Soundgrid for Venue card, host plug in, Waves Extreme Server C 2.0, iPad available for wireless console control, UPS backup

MONITORS: Digico Quantum 225 PULSE with Internal Waves card and HMA, SD Rack HMA loaded with 56 in x 32 out 32bit Ultimate Stadius Mic Pres, Waves Super Rack plug in, Waves Axis Scope, Waves Extreme Server C X10, DMI Dante2, DMI Klang, iPad available for wireless console control, UPS backup

PORTABLE: Behringer X32 Rack 40 channel 16 in x 8 out rackmount digital console (includes 2 x Shure SLXD SM58 handheld wireless)

HOUSE SPEAKER CONFIGURATION

The Lillian S Wells Hall features a D&B Audiotechnik Array Processed V Series stereo line array system, flown and flanking the proscenium opening to cover the hall.

MAIN ARRAYS

The primary speaker system consists of (2) D&B line arrays consisting of (1) D&B ViSub 18"/12" cardioid sub and (7) D&B Vi8 2x10"/8"/1.4" 3-way loudspeakers, flown on either side of the proscenium opening. The arrays are powered by (16) channels of D&B 30D amplification and feature D&B array processing. The arrays are dead hung. ** ViSubs are part of array processing and can not be sent a discreet send, fed from L&R **

SUBWOOFERS

The Subwoofers are (2) D&B SL-GSUB 3 x 21" cardioid subwoofers powered by 4 channels of D&B D80 amplification. Subwoofers are evenly spaced and located under center stage thrust

CENTER FILL

The Center Fill consists of (1) dead hung horizontal D&B Vi7P 2x10"/8"/1.4" 3-way loudspeaker powered by 1 channel of D&B 30D amplification

FRONT FILLS

The front fills consist of (7) D&B 8S 8" coaxial 2-way loudspeakers evenly spaced and built into the lip of the stage, powered by 3 channels of D&B 30D amplification.

HOUSE PROCESSING

House PA is processed via (2) Lake LM44 processors and D&B RI software with touchscreen PC control.

HOUSE AUDIO SYSTEM TUNING SOFTWARE

Rational Acoustic Smart DI V9.1
Focusrite Scarlett 2i2 v3 interface
iSemcom EMX-7150 measurement microphone

AUDIO SYSTEM PATCHING

Four consoles patch to XTA MX36 console switcher Input B or C via AES or Analog

Required drive lines from consoles include Left, Right, Subs, and Fills

Analog, Cat6, and MAD1 tie lines located throughout hall

(4) Belden Cat6a SHIELDED direct lines from DSL to FOH mix position

(4) Neutrik Opticalcon 2 channel Multi Mode Fiber connections located DSL and FOH mix position

(2) Neutrik Fiberfox HMA 2 channel Multi Mode Fiber connections located DSL and FOH mix position

All systems are available for individual discrete patching at FOH mix position and DSL via analog lines

MICROPHONE, DI & STAND INVENTORY

Microphones	QTY	Direct Boxes	QTY
Shure SM58	8	Radial JDI	4
Shure Beta58	4	Radial JDI Stereo	4
Shure SM58S Switched	2	Radial J48 Active	2
Shure Beta87A	2	Radial ProDI	2
Shure SM57	4	Radial ProD2 Stereo	2
Shure Beta 57	2	Radial Pro48 Active	2
Shure Beta 52	1	Countryman T85 Active	2
Shure Beta 91	1	Whirlwind PC DI Stereo	2
Shure KSM 141 Stereo pair	3 (6 total mics)		
Shure Beta98 Horn Clamp	2	Stands	QTY
Shure RPM626 Preamp	2	K&M 210/9 Tall	14
Sennheiser e904 Clip on	6	K&M 25900 Medium	8
Sennheiser e902	2	K&M 25950 Short	2
Telefunken M82	1	Atlas MS-10 Straight Base	8
AKG C414 XLII Stereo	1 (2 total mics)	OnStage SMS7630 Heavy	4
DPA 4099 Stereo piano kit	1 (2 total mics)	Latin Percussion X-Claw	3
Crown PCC-160 Floor Mic	6	Gravity Amp Clamp	2
Audio Technica Pro45 Hanging	4	Z Bar Amp Mic holder	2

WIRELESS MICROPHONE INVENTORY

Shure AD4Q (8 total channels of Axient Digital available)	2 (Quad Axient Receiver)
Shure AD1	4 (Axient Beltpack)
Shure AD2	8 (Axient Handheld)
Shure RPWI12 SM58	8 (Wireless Capsules)
Shure RPWI18 Beta58	4 (Wireless Capsules)
Shure SLXD4D	1 (Dual SLXD Receiver)
Shure SLXD SM58	2 (SLXD Handheld)
Shure MX153 Beige Over ear	4
Shure MX153 Cocoa Over ear	2
Countryman B3 Black Lav	2
RF Venue Dfin Antenna	1

SOURCE GEAR

(1) Denon 501C CD Player

IEMs, MONITOR SPEAKERS AND AMPLIFICATION

(4) Shure ADTQUS Quad Axient Digital PSM Transmitter (16 total stereo channels of PSM available)

(18) Shure ADXR Axient Digital PSM Bodypack Receivers

(1) Shure AD8C PSM 8-Port Antenna Combiner

(2) RF Venue CP Beam Antenna

(2) Shure P9HW Stereo wired IEM belt packs

(12) D&B M4 15" Monitor floor wedges

(2) D&B VP7 2x10"/8"/1.4" 3-way loudspeakers (Side fill tops) w/ flying hardware

(5) D&B B6 18" Subwoofers (side fill subs and drum subs)

(3) D&B D20 4 channel amplifiers

(1) D&B D80 4 channel amplifiers

16 total channels of monitor amplification

(2) RCF ART-912A powered speakers

(2) Behringer B105D powered speakers located DSL and at mix position, used as shout boxes

MICROPHONE SPLITTER *Microphone Splitter located Stage Left, W4 tie ins located DSL and FOH*

Whirlwind CONCERT 58x0 No returns 3-way TRSP-IF transformer mic splitter with 2 split outputs

Whirlwind Patch Master 2U with 3' color coded tails

(2) Whirlwind 10' W4 breakout 58x0

(1) Whirlwind 25' W4 cable breakout 48x10

(1) Whirlwind 25' W4 cable breakout 10x48

(5) Whirlwind W1 12 channel stage boxes (color coded to patch master)

(5) Whirlwind 75' W1 to W1 cables

(3) Whirlwind 50' Mini 12 stage box to breakout

FOH MIX POSITION

Located in the rear of the hall approximately 85' from the stage. Measuring 16' wide by 12' deep, the position is an open booth surrounded by 3'- 6" walls. Side walls are removable for easy load in and out

TOUR SNAKE PATH

FOH mix position features an 8" PVC snake pull from either DSL or DSR

Required cable length for PVC pull to FOH mix position is 175'

Secondary path requires 300' of cable length to FOH mix position

BACKSTAGE INTEGRATION

The Lillian S Wells Hall is equipped with a QSC Qsys ecosystem of integrated audio, video, and control. Backstage audio program feed, control and paging is provided via wall mounted Qsys touch screen controllers

QSC QSYS PORTABLE EQUIPMENT

(2) QSC TSC-80w-G2 portable touch screen controllers

(2) QSC PS-1650G portable paging stations

(3) QSC NV-21-HU portable video endpoint (2 decoder, 1 encoder)

Qnet patching available downstage left and right, house mix position

Qsys system patching for backstage audio program feed and paging available at FOH mix position

STAGE MANAGERS CONSOLE *Connections available DSR and DSL*

(1) Clear Com RM704 Station

(1) 20" HD monitor with stage feed

(1) Vaddio PCC Premier Camera Controller

(1) Audio monitor

(1) Qsys paging station

(1) Qsys video endpoint for SM Camera view display

CLEARCOM COMMUNICATION

The Lillian S Wells Hall is equipped with a ClearCom FreeSpeak II 4 Channel wireless and wired intercom system. Access to all 4 wired channels are located in the control booths, spot booth, DSR, DSL, USR, USL, rail, grid, FOH catwalk, and audio rack locations

(1) ClearCom PS-704 four channel power supply (supports up to 40 packs)

(1) ClearCom RM-704 four channel remote rack station (located DSR at stage managers console)

(6) ClearCom RS-701 wired beltpack (single channel)

(3) ClearCom RS-702 wired beltpack (two channels)

(9) ClearCom CC-300 Single muff headsets

(4) ClearCom CC-400 Dual muff headsets

- (4) ClearCom CC-110 Lightweight single muff headsets
- (2) ClearCom FL-7 Beacon
- (8) ClearCom 20' 6pin XLR two channel belt pack cables

WIRELESS CLEAR COM COMMUNICATION

- (1) ClearCom FreeSpeak II Basell-5 1.9 Ghz (supports up to 5 wireless packs)
- (5) Clearcom FreeSpeak II Digital Wireless Belt packs
- (2) ClearCom FreeSpeak FSII-TCVR Active Antennas DSR and DSL
- (1) ClearCom AC-60 5-bay Battery Charger

HOUSE PIANOS

- (1) 6.5' Sub-Concert Grand Yamaha C-5 Piano in gloss black
 - (1) Yamaha Aris Keyboard with 88 weighted keys in wooden enclosure Green Room Piano
- *** The Parker Pianos are tuned by house tuner ONLY *****

AUDIO POWER

Audio power for the Lillian S Wells Hall is provided through K-13 transformer delivering clean isolated power to all audio and video locations throughout the theatre.

200-amp ETC Power safe 3 phase 6-wire disconnect located DSL, 25' and 50' camlock cable available
 30-amp L21-30 3 phase in the following locations, 4 DSL, 2 DSR, 2 USR, 2 USL, 1 Mix position, 2 Spot booth
 20-amp Edison receptables located throughout hall

PORTABLE STAGE POWER EQUIPMENT

- (6) Lex Products BNB2-3B 30amp Bento box with 6 Edison receptacles
- (6) PDU Whips L21-30P to L14-30R 208v plug adapter power cord 1'
- (2) PDY Whips L21-30P to L6-20R 208v plug adaptor power cord 6'
- (2) PDU Whips L21-30P to 3 x L6-30R splitter cord 4'
- (4) PDU Whips L21-30P to 3 x L5-20R splitter cord 4'
- (6) L21-30 locking extension 10'
- (4) L21-30 locking extension 25'
- (4) L21-30 locking extension 50'
- (4) Edison Quad boxes 15'
- (4) Edison Quad boxes 30'

AUDIO VISUAL EQUIPMENT

I2G HDSDI & Cat6 tie lines capable of up to 8K resolution located throughout hall

- (1) Digital Projection M-Vision Laser 2100WU 20,000 lumens, Native Resolution 1920x1080
** PROJECTOR IS HUNG FROM DOWNSTAGE TRUSS AND NOT MOVEABLE**
- (1) Short Throw Zoom 0.9 – 1.2 Lens
- (1) Draper Black Stage screen with XT700V cineflex white dual-purpose screen 16'x9' w/bottom dress kit
- (1) Black Magic ATEM Studio 4K
- (1) Black Magic Smart View Duo Dual 7" HD screens
- (1) Black Magic ATEM Mini Pro HD
- (6) Decimator I2G Cross HDMI to HDSDI Bidirectional
- (4) Black Magic Mini 3G HDSDI to HDMI Bidirectional
- Various 4K HDMI/I2G HDSDI/Cat6a cables and adaptors
- (1) Dsan PerfectCue Micro w/ (2) 4 button controllers

Projector power located Downstage right and grid level stage right w/L6-20 208v

FOH STAGE VIEW CAMERA

- (1) Vaddio RoboShot 40 UHD 4K PTZ camera
- (1) Vaddio PCC Premier PTZ Camera Controller

NO RECORDING CAPABILITIES

THEATRICAL LIGHTING

CONTROL

- (1) MA Lighting GrandMA3 Full size lighting console with 20,480 Control Parameters
- (1) ProX GrandMA3 full size flip case

- (1) ETC ION Console 5000 with 2 ELO 22" touch screen monitors
- (1) Custom Circle Three Designs case
- (1) ETC Universal Fader Wing 2 x 20 to left
- (1) ETC Universal Fader Wing 1x20 above

- (2) ETC Sensor 3 SR3-48 Racks with CEM3 Controllers
- (1) iPad Mini for wireless console control

LIGHTING POSITION DISTANCE FROM PROSCENIUM

Stage left and right toms	2'
AP Forestage Truss	6' - 8"
House right and left horizontal box booms	36'
FOH Lighting Cove	38' - 7"
Lighting/AV Booth	92' - 5"
Mix Position	94' - 2"
Back of house lighting pipe	95' - 3"
Spot Booth	96' - 9"
Back wall of seating area	104' - 5"

DMX TRANSFER PANELS

- (4) DMX In receptacles and (2) Net connections located DSL, DSR, House Mix Position, Lighting booth, Center House Floor Pocket

HOUSE LIGHTING CONTROL

House lights can be controlled via Portable 18" Paradigm touchscreen station and DSR Paradigm touchscreen station. House light control is also accessible via Net patch

POWER DISTRIBUTION

- (1) ETC PowerSafe 400 Amp 3-Phase 6-wire disconnect USR 25' and 50' cable available
- (1) ETC PowerSafe 200 Amp 3-Phase 6-wire disconnect USL 25' and 50' cable available
- (192) ETC Sensor 3 Thru Power Dual 20amp 2.4kw Modules with remote activated mechanical relays and thropower bypass located throughout hall. See circuit locations below

NON-DIMS

All 192 thru power circuits can be set as 20amp non-dim/relay or constant on

FOLLOWSPOTS

(2) 2.5k Lycian 1279 Follow spots located in spot booth - *Follow spots can be placed in 5 positions within spot booth*

FOLLOWSPOT POWER

(5) L6-30 208v 30amp connections located in spot booth
(2) L6-30 208v 30amp receptacles located DSR

AP FORESTAGE LIGHTING TRUSS

(3) 18" x 12" x 8' black box truss to create 24' lighting truss. Truss is hung from 4 house chain hoists and located 6' -8 3/4" downstage of the proscenium. House truss can accommodate up to 2000lbs. 6 Thru-Power circuits available at truss location.

GENIE LIFT

(1) 30' Genie AWP 30 lift (battery operated)

INSTRUMENT INVENTORY

All fixtures include clamp, safety cable, and gel frame

Instrument	QTY	TYPE
Martin ERA 800 Performance	8	LED Moving Profile
Martin Aura	26	LED Moving Wash
Martin ELP-CL 36 Degree	22	LED RGBAL Ellipsoidal
Martin ELP-CL 26 Degree	16	LED RGBAL Ellipsoidal
Chauvet Ovation CYC I FC	12	LED RGBAL Cyc light
ETC Source 4 50 Degree	4	Ellipsoidal
ETC Source 4 36 Degree	42	Ellipsoidal
ETC Source 4 26 Degree	18	Ellipsoidal
ETC Source 4 19 Degree	41	Ellipsoidal
ETC Source 4 Zoom 15-30 Degree	6	Ellipsoidal
Elation Opti RGB	6	3 pin LED Par
Altman Par64	8	Par Can
Elation Cuepix Blinder WW2	2	Blinders
Martin Rush Blinder I WW	2	Blinders
Chauvet Pro Amhaze Stadium	2	Hazer

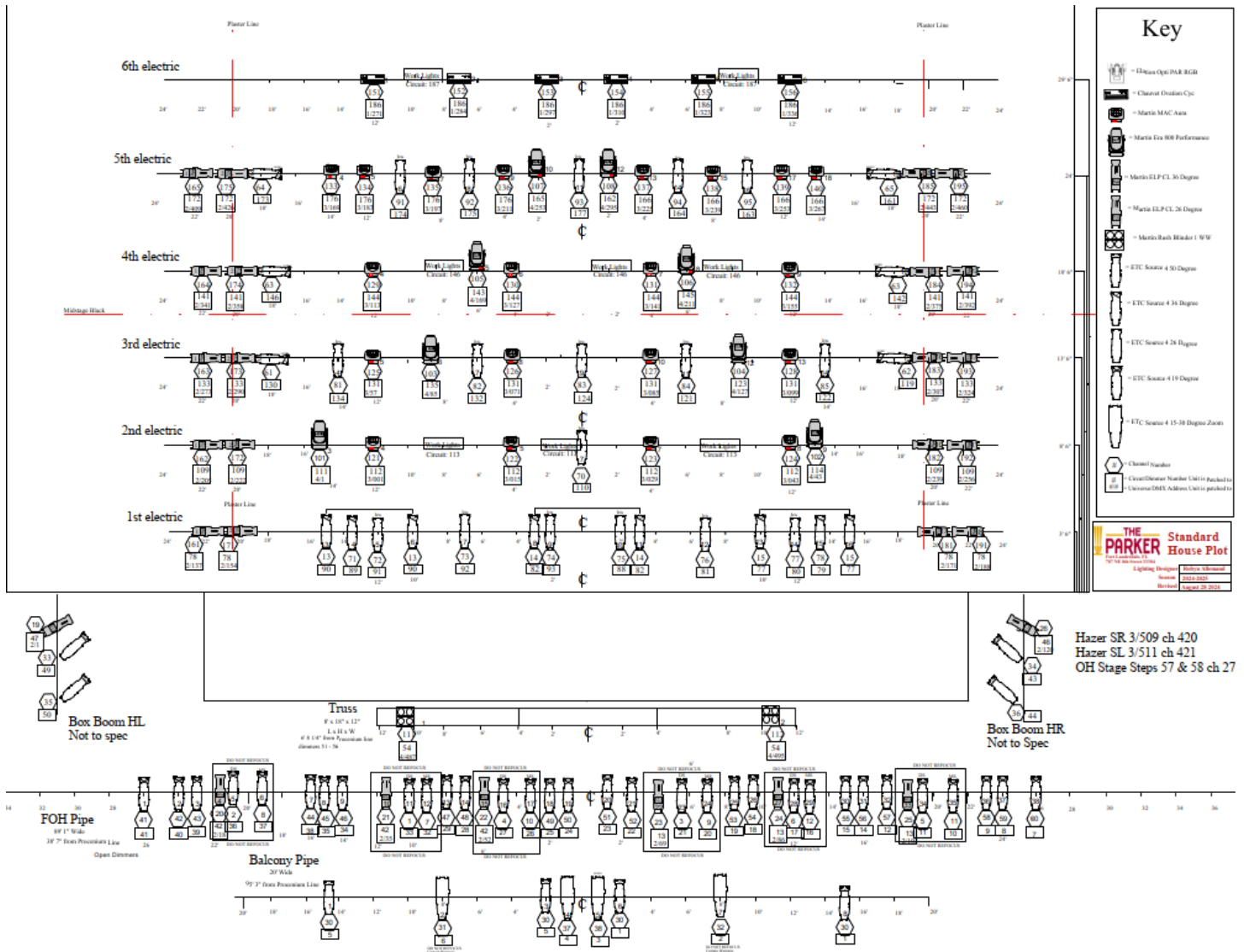
LIGHTING ACCESSORIES INVENTORY

Item	QTY
ETC Response 2 universe node	2
Luminex Luminode 4	2
Pathport 4 universe node	1
Pathport DMX repeater 8 way	2
ETC Drop In Iris	20
ETC 6.25" Donut	20
ETC "A" Size Pattern Holder	16
ETC "B" Size Pattern Holder	16
20A Stagepin "Y" Cable	16
Stage Pin Cable	Various lengths
Neutrik Powercon 10'	10
Neutrik Powercon 25'	10
Neutrik Powercon 50'	2
Neutrik Powercon True One 10'	10
Neutrik Powercon True One 25'	10
Neutrik Powercon True One 50'	2
5 pin DMX 10'	15
5 pin DMX 25'	5
5 pin DMX 50'	5
5 Pin DMX 65'	24 (Grid Drops)
3 pin DMX 5'	20
3 pin DMX 10'	20
3 pin DMX 25'	20
Shielded Cat6 Ethercon 10'	4
Shielded Cat6 Ethercon 25'	4
Shielded Cat6 Ethercon 50'	2
Shielded Cat6 Ethercon 100'	2
6 circuit Multi Cable 12'	4
6 circuit Multi Cable 65'	24 (Grid Drops)
6 Circuit Multi Cables 75'	5
6 Circuit staggered break out 12'	26
4/0 Cam Lok Feeder 25' 4 wire	2
4/0 Cam Lok Feeder 50' 4 wire	1

CIRCUIT LOCATIONS

PLUGIN BOX #	CIRCUIT #	CONECTOR	LOCATION
1	1-2	Stagepin Receptacle	Balcony Rail HR
2	3-4	Stagepin Receptacle	Balcony Rail Center
3	5-6	Stagepin Receptacle	Balcony Rail HL
6	7-12	Stagepin 4' Tail	FOH Cove HR
7	13-18	Stagepin 4' Tail	FOH Cove HR
8	19-24	Stagepin 4' Tail	FOH Cove Center
9	25-30	Stagepin 4' Tail	FOH Cove Center
10	31-36	Stagepin 4' Tail	FOH Cove HL
11	37-42	Stagepin 4' Tail	FOH Cove HL
13	43-46	Stagepin Receptacle	Box Boom HR
14	47-50	Stagepin Receptacle	Box Boom HL
18	51-56	Single Veam	Anti Proscenium Catwalk
15	57-62	Single Veam	Torm DSL
16	63-68	Single Veam	Torm DSR
31	69-72	Stagepin Receptacle	USL
32	73-76	Stagepin Receptacle	USR
19	77-82/83-87	Dual Veam	Grid DSL
20	88-93/94-98	Dual Veam	Grid DSR
21	99-104/105-108	Dual Veam	Grid DSL
22	109-114/115-118	Dual Veam	Grid DSR
23	119-124/125-129	Dual Veam	Grid MSL
24	130-135/136-140	Dual Veam	Grid MSR
25	141-146/147-150	Dual Veam	Grid MSL
26	151-156/157-160	Dual Veam	Grid MSR
27	161-166/167-171	Dual Veam	Grid USL
28	172-177/178-182	Dual Veam	Grid USR
29	183-188	Single Veam	Grid USL
30	189-192	Single Veam	Grid USR

Parker House Lighting Plot



BACKSTAGE

Backstage door located next to loading dock at northeast corner of building

DRESSING ROOMS

1st floor: (1) ADA compliant star dressing room located just behind USR with shower and private toilet
(1) star dressing room located just behind USL with shower and private toilet
(2) private dressing rooms (center behind stage) with showers, no private toilet
(1) Men's restroom, no showers, east end of backstage hallway
(1) restroom outside Green Room
(1) restroom with shower at East end of backstage corridor

2nd floor: (8) chorus dressing rooms with capacity for up to 5 people per room
(1) Ladies' restroom (SR) with shower
(1) Men's restroom (SL) with shower
There are (2) stairwells to and from the 2nd floor dressing rooms located at the East (*Stage left*) and West (*Stage right*) end of the dressing room hallway with access to backstage at stage level.

PRODUCTION OFFICES

The Lillian S Wells Hall does NOT have a dedicated touring production office, all 1st floor dressing rooms feature hardwired internet, (2) 2nd floor dressing rooms feature hardwired internet

GREENROOM

Greenroom, optional rehearsal space, and hospitality kitchen located on the West side of the theater (stage right) with access to backstage and West lobby

LAUNDRY ROOM

Fully equipped laundry room with (2) LG large capacity washers, (2) LG large capacity dryers, (1) sink, (2) irons w/boards, (3) Z racks, (2) steamers, (1) 4'x8' worktable.

TELEPHONES

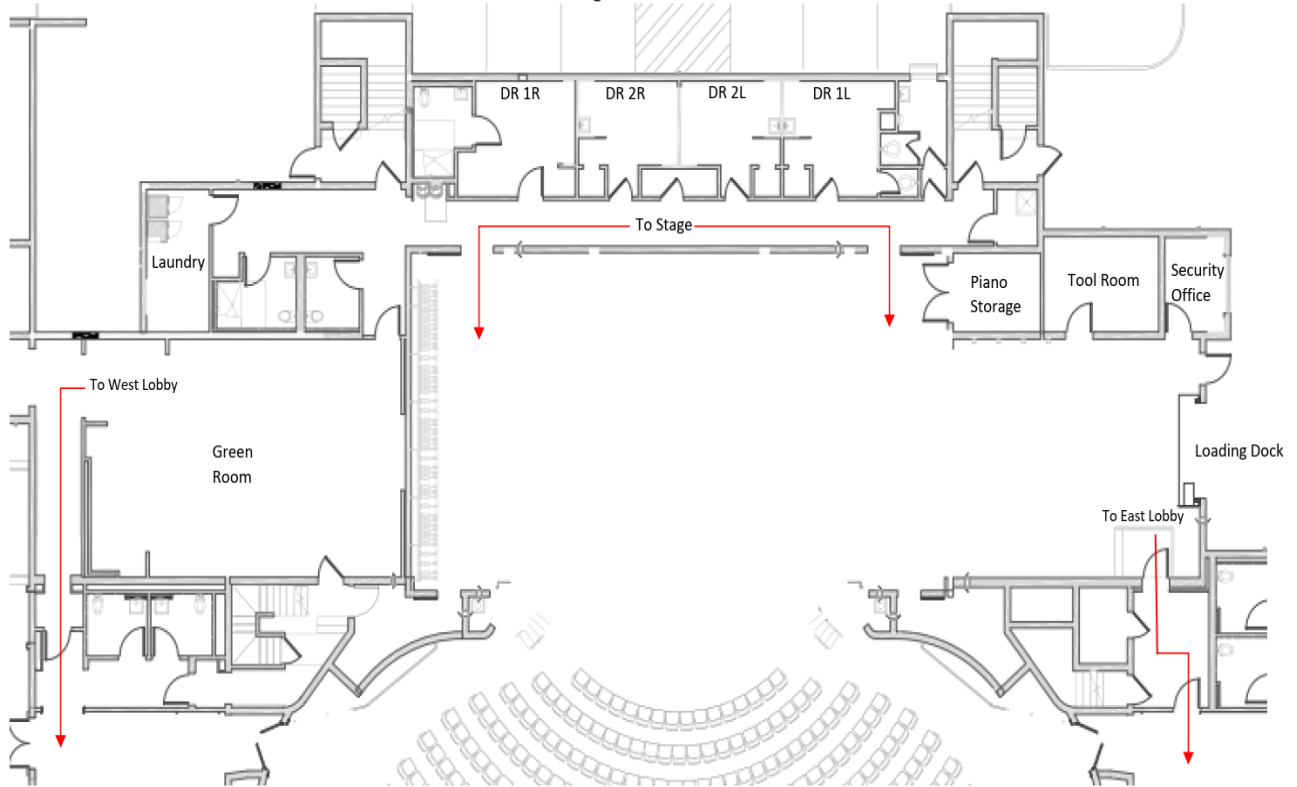
Phonelines can be provided by Yealink digital phone system, please advance needs with production

BACKSTAGE INTERNET / WIFI

Wifi Internet access available throughout backstage and hall
Network ID: PKR Backstage
PW: Curtainsup23/24

THE PARKER

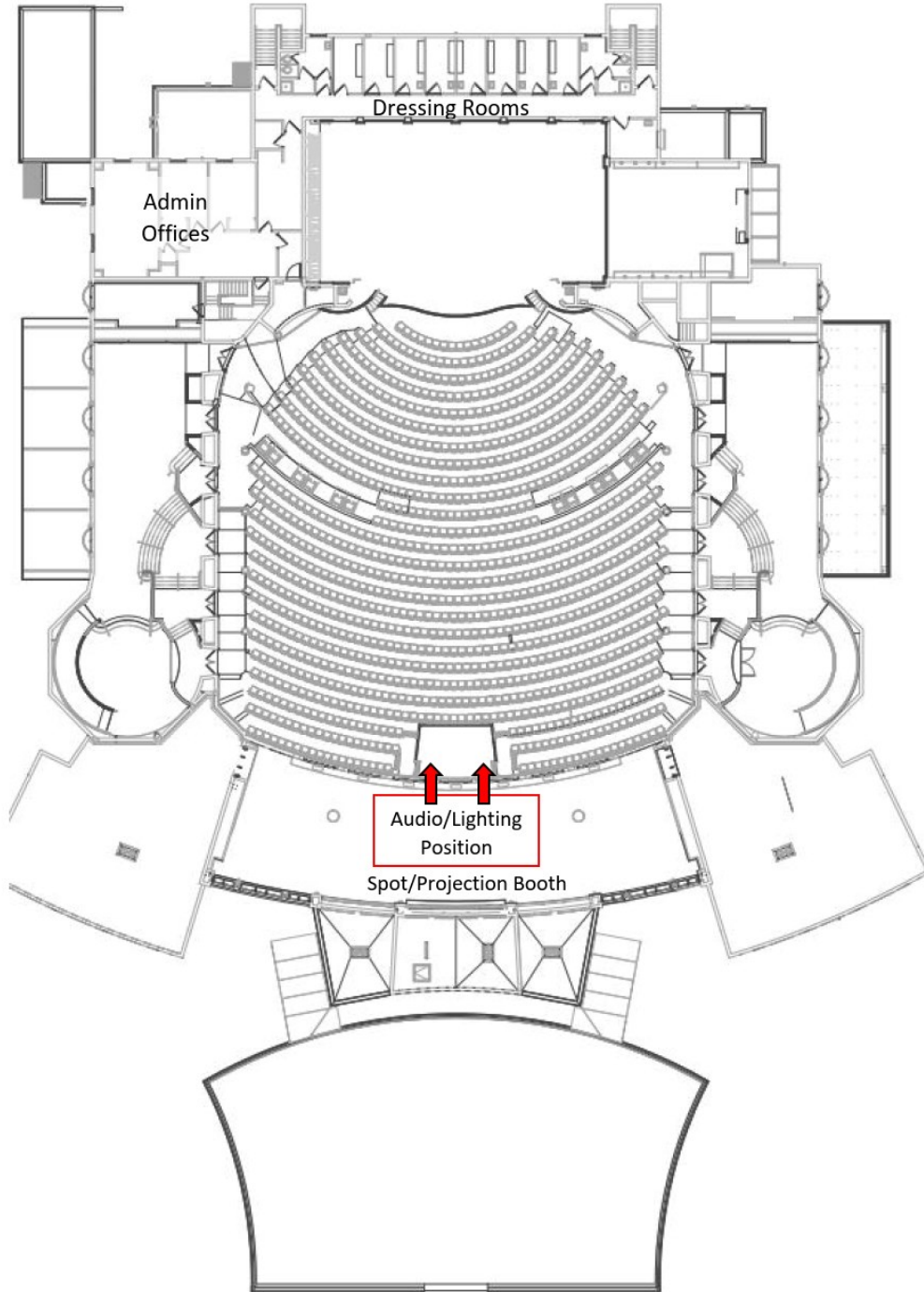
First Floor Dressing Rooms & Green Room Area



All first floor dressing room includes showers
Dressing rooms DR1R and DR1L have private restrooms


THE PARKER

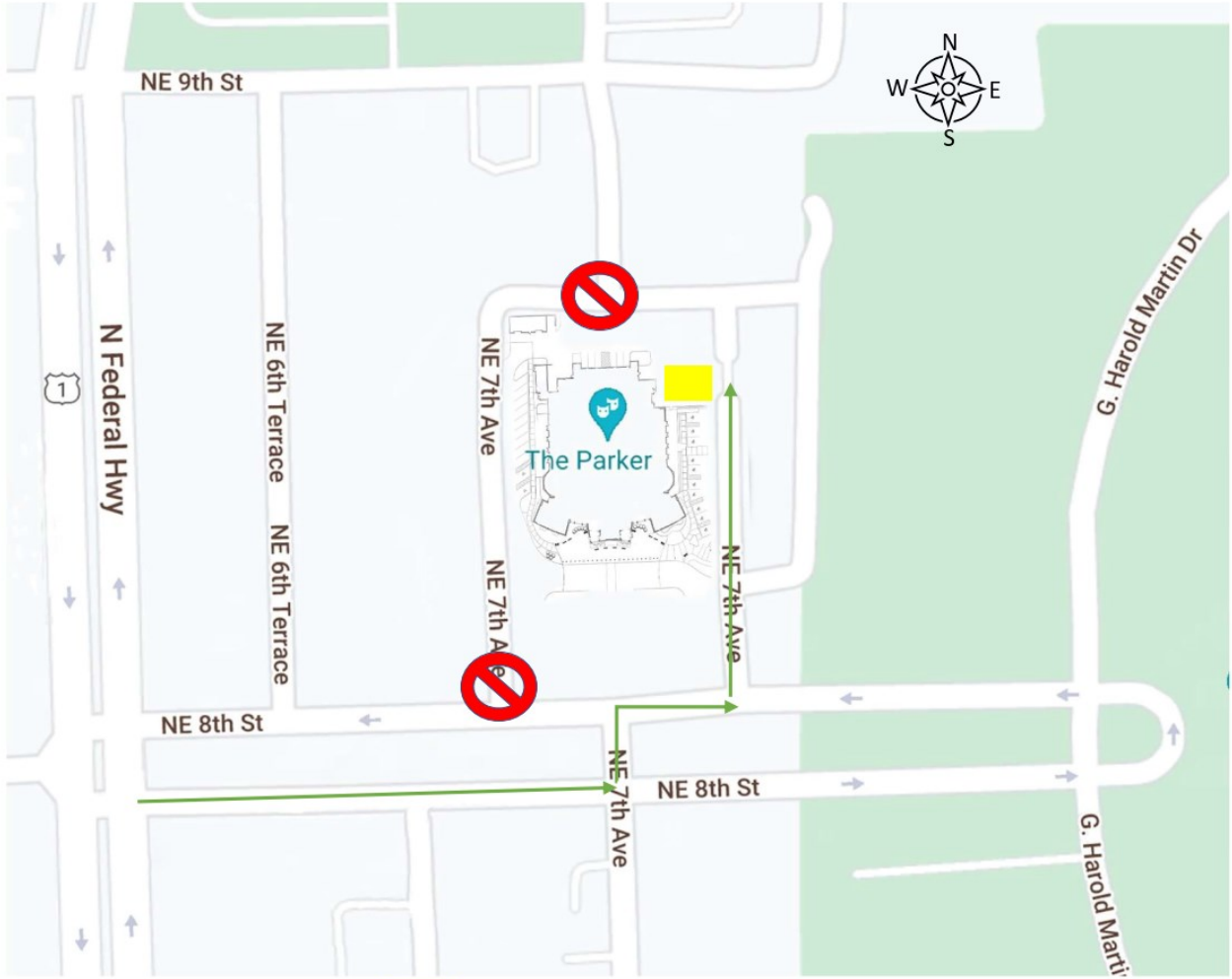
The Parker Floorplan, 2nd floor




THE PARKER

Truck Entry Map to Loading Dock

Entrances with  marking have turns that are too tight for trucks



 Is the Loading dock area