



PRESENTS

SLOW BURN THEATRE CO.
PRODUCTION OF

ONCE ON THIS ISLAND



FEBRUARY 4-20

Amaturo Theater



BROWARD CENTER
FOR THE PERFORMING ARTS

slow burn
THEATRE CO.

ONCE ON THIS ISLAND

A Musical

Book and Lyrics by
LYNN AHRENS

Music by
STEPHEN FLAHERTY

Based Upon The Novel "My Love, My Love" by
ROSA GUY

Originally Directed and Choreographed on Broadway by
GRACIELA DANIELE

Playwrights Horizons, Inc. Produced ONCE ON THIS ISLAND
Off-Broadway In 1990
Originally Produced On Broadway By The Shubert Organization,
Capital Cities/ABC, Inc.
Suntory International Corporation and James Walsh,
In Association With Playwrights Horizons

Director
PATRICK FITZWATER

Choreographer
JEREL BROWN

Music Director
EDEN MARTE

Assistant Director
MARLO RODRIGUEZ

Production Stage Manager
JACKIE LAWLOR*

Scenic Designer
CLIFF PRICE

Lighting Designer
GEORGE JACKSON

Costume Designer
LENORA NIKITIN

Props Designer
JAMEELAH BAILEY

Sound Designer
PATRICK FITZWATER

Make-Up Designer
STEPHANIE LOVERDE

Technical Director
ALEX FINE



ONCE ON THIS ISLAND is presented through special arrangement
with Music Theatre International (MTI). All authorized performance
materials are also supplied by MTI. www.mtishows.com

Storytellers

Ti Moune, Peasant Girl	BRINIE WALLACE*
Little Ti Moune, Little Girl.....	CHLOE NICOLE
Mama Euralie	JADE JONES
Tonton Julian.....	GEOFFREY SHORT
Daniel Beauxhomme.....	JEMARCUS RIGGINS
Papa Ge.....	ELIJAH WORD*
Asaka	KAREEMA KHOURI*
Agwe.....	NATE PROMKUL
Erzulie.....	LILLIE THOMAS*

ANDRÉ RUSSELL, DARYL PATRICE, JASMINE IACULLO, JEREL BROWN,
NAYOMI BRAAF, NICOLE DIKUN, REYNEL REYNALDO

Understudies

Ti Moune: NAYOMI BRAAF, Mama Euralie: DARYL PATRICE
Tonton Julian: ANDRÉ RUSSELL, Daniel Beauxhomme: NATE PROMKUL
Papa Ge: JEREL BROWN, REYNEL REYNALDO, Agwe: ANDRÉ RUSSELL
Erzulie: NICOLE DIKUN

Production Team

Director.....	PATRICK FITZWATER
Choreographer	JEREL BROWN
Music Director.....	EDEN MARTE
Assistant Director.....	MARLO RODRIGUEZ
Production Stage Manager	JACKIE LAWLOR*
Technical Director	ALEX FINE
Scenic Designer	CLIFF PRICE
Lighting Designer.....	GEORGE JACKSON
Costume Designer	LENORA NIKITIN
Sound Designer.....	PATRICK FITZWATER
Props Designer.....	JAMEELAH BAILEY
Make-Up Designer	STEPHANIE LOVERDE
COVID Compliance Officer, Child Wrangler.....	ANNA KORNERUP
Set Build by.....	MNM THEATRE COMPANY
Head Carpenters.....	JOHNBARRY GREEN, JORDON ARMSTRONG
Musical Tracks:.....	THE MT PIT
Costume Shop Staff:	
Design Assistant	MINOUCHE PERICLES
First Hand	FRANCISCA REYES
Stitchers	CALEB COOPER, KATONYA RICHMOND, MAKAYLA LLOYD, MARGARITA NECUZE

Slow Burn Theatre Board of Directors:

President: Ryan Poliakoff • Vice President: Matthew Korinko (Co-Founder)
Secretary: Michael Mehmet • Treasurer: Ari Bodner
David Diaz • Mariane DiPierro Pavelic • Patrick Fitzwater (Co-Founder)
Shirley Gross • George Tandy • Michele Volpe • Beatriz Miniaci (Honorary)

Staff:

Executive Director: Matthew Korinko • Artistic Director: Patrick Fitzwater
Administrative Officer: Julie Valent • Technical Director: Alex Fine
Media Relations: Tonya Evans • Grants Administrator: Frank Galloway



MUSICAL NUMBERS

“Prologue/We Dance”	Company
“One Small Girl”	Agwe, Asaka, Erzulie, Papa Ge, Tonton, Mama, Storytellers
“Waiting For Life”	Ti Moune, Storytellers
“And The Gods Heard Her Prayer”	Asaka, Agwe, Erzulie, Papa Ge, Storytellers
“Rain”	Agwe, Storytellers
“Discovering Daniel”	Ti Moune, Storytellers
“Pray”	Ti Moune, Tonton, Mama, Agwe, Asaka Erzulie, Papa Ge, Storytellers
“Forever Yours”	Ti Moune, Daniel, Papa Ge, Storytellers
“The Sad Tale Of The Beauhommes”	Company
“Ti Moune”	Mama, Tonton, Ti Moune
“Mama Will Provide”	Asaka, Storytellers
“Waiting For Life (Reprise)”	Ti Moune
“Some Say”	Storytellers, Little Girl
“The Human Heart”	Erzulie, Agwe, Storytellers
“Pray (Reprise)”	Ti Moune, Daniel, Father, Storytellers
“Some Girls”	Daniel
“The Ball”	Storytellers, Andrea, Daniel
“Ti Moune’s Dance”	Ti Moune, Storytellers
“Andrea Sequence”	Andrea, Ti Moune, Daniel
“Promises/Forever Yours (Reprise).....	Papa Ge, Ti Moune, Erzulie, Storytellers
“A Part Of Us”	Company
“Why We Tell The Story”	Company

The videotaping or other video or audio recording of this production is strictly prohibited.



Special Thanks: The Open-Caption Performance is generously sponsored by the Amaturio Family Foundation.



*Appearing through an Agreement between this theatre, Slow Burn Theatre Company, and Actors' Equity Association, the Union of Professional Actors and Stage Managers in the United States. This Theatre operates under an agreement between the League of Resident Theatres and Actors' Equity Association, the Union of Professional Actors and Stage Managers in the United States



Funding for this project is provided in part by the Board of County Commissioners of Broward County, Florida as recommended by the Broward Cultural Council. Sponsored in part by the State of Florida, Department of State, Division of Arts and Culture and the Florida Council on Arts and Culture.

CAST



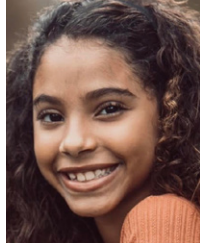
Brinie Wallace*



Jade Jones



Geoffrey Short



Chloe Nicole



Jermarcus Riggins



Elijah Word*



Kareema Khouri*



Lillie Thomas*



Nate Promkul



Jerel Brown



André Russell



Reynel Reynaldo



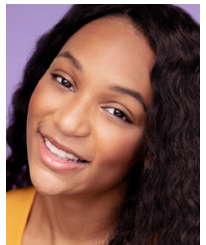
Nayomi Braaf



Nicole Dikun



Daryl Patrice



Jasmine Iacullo

SLOW BURN THEATRE COMPANY IS A 501(C)(3) NOT-FOR-PROFIT CORPORATION; ALL DONATIONS ARE TAX-DEDUCTIBLE TO THE EXTENT PROVIDED BY STATE AND FEDERAL LAW AND 100% OF SUCH SUPPORT IS APPLIED TO SLOW BURN THEATRE COMPANY'S OPERATIONS. A COPY OF THE OFFICIAL REGISTRATION (CH37965) AND FINANCIAL INFORMATION MAY BE OBTAINED FROM THE DIVISION OF CONSUMER SERVICES BY CALLING TOLL-FREE WITH THE STATE AT 1-800-435-7352. REGISTRATION DOES NOT IMPLY ENDORSEMENT, APPROVAL OR RECOMMENDATION BY THE STATE. TAX ID#27-0820234

CAST

(In Alphabetical Order)

ANDRÉ RUSSELL (*Storyteller, Tonton Julian/Agwe US*) is pumped to be back at the Broward Center with *Slow Burn!* He has been involved in the theatre for more than 15 years and is currently the youth director at the Coral Springs Center For The Arts. Besides being a director/entrepreneur, his recent credits include *C.C. (Dreamgirls)*, *Mereb (Aida)*, *Eddie Souther (Sister Act)*, *Flick (Violet)*, *Avatar (S4K: Time 2 Play - Adrienne Arshnt Center Run)*, *Tom Collins (Rent)*, *Tyrone Jackson (Fame)* and *Judge Turpin (Sweeny Todd)*. He would like to thank God, Patrick, and Matthew, the Broward Center, & his family and friends for their continuing support.

BRINIE WALLACE* (*Ti Moune, Peasant Girl*) is excited to be making her *Slow Burn Theatre* debut doing an absolute dream role. Favorite credits: *U/s Nabulungj/Sadaka (Book of Mormon N.A. Tour)*, *Serena (Legally Blonde, P.C.L.O.)*, and *Dynamite (Hairspray, The Munny)*. Penn State BFA Musical Theatre Graduate, 2012. BrinieWallace.com. Special thanks to: the YoungArts Foundation, her family, the Volkman's, the Tombros', Anna Lise Jensen, Jen Waldman, Kate Emerich, Kayla Pecchioni, Kristen Jeter, and her new *Slow Burn Theatre* family for making this happen!

CHLOE NICOLE (*Little Ti Moune, Little Girl*) is honored and excited to join *Slow Burn Theatre* for this production. Having previously participated in the Broward Center for Performing Arts Young Actors Summer Workshops, it has been her goal to participate in professional works on her hometown stage. Chloe is ten years old and has been modeling and acting for print and TV commercial work since the age of three. Academically gifted, her studies are also focused on theater and tech in a program for the Arts. She has taken part in many productions, both on stage and backstage. She enjoys singing, dancing, vlogging @littlelady-chloe, and playing with her little sister Catie in her spare time.

DARYL PATRICE (*Storyteller, Mama Euralie US*) is a Miami native actress, singer, improviser, playwright and educator based in Atlanta, GA. Memorable performances include *Summer Shorts* (City Theatre), *Dreamgirls* (Broward Stage Door), *Crooked* (Thinking Cap Theatre), and *Groundhog Day* (Slow Burn). She's also the proud mama of two short plays: "Regret to Inform You" and "Distance Makes the Heart..." She dedicates this performance to Alex Newell, who winked at her when she saw them as Asaka on Broadway in 2018.

ELIJAH WORD* (*Papa Ge, Storyteller*) is so thrilled and excited to be back at *Slow Burn* in this incredible production! He is a Florida native and has performed on many stages throughout the state! Elijah has been in many *Slow Burn* show like *Xanadu*, *Rock of Ages*, and *Pricilla: Queen of the Desert!* He is fresh out of his heels from playing Lola here in *Slow Burn's* production of *Kinky Boots!* Elijah won a South Florida Cardonell Award for his portrayal of Jimmy Early in *Dreamgirls* at Broward Stage Door Theatre. Elijah wants to give a huge thank you to his family and his friends for all their amazing love and support in all his endeavors! Enjoy the show! IG: elijahword10

GEOFFREY SHORT (*Tonton Julian, Storyteller*) Geoff is happy to be back at *Slow Burn* where he last appeared in *Big Fish* and *Little Shop of Horrors*. He's appeared in and directed shows throughout South Florida including PPTOPA, *Slow Burn*, *Marquee Theatre*, *Andrews Living Arts*, *Chicken Coop Theatre*, *Outre'*, *Evening Star* and more. Geoff is President at *Pembroke Pines Theatre* of the Performing Arts and serves as Secretary of the Board of the Carbonell Awards. Recent directing credits: *Wedding Singer*, *Jesus Christ Superstar*, *West Side Story*, *In the Heights*, *See Rock City*, *Marvin's Room*, *Annie Get Your Gun*, *Gypsy*, *Joseph...Dreamcoat*, *Zombie Prom* and *The Little Mermaid*. Always thanks to my

WHO'S WHO



inspiration, my incredible wife Cindy. www.GeoffreyBShort.com

JADE L. JONES (*Mama Euralie, Storyteller*) is a UCF graduate and a native South Floridian. She has been singing and acting professionally for several years. Taking on comedic and dramatic roles from Deloris Van Cartier in *Sister Act* (Athens Theatre), to Lena Younger/Mama in *A Raisin in the Sun* (Garden Theatre). She has performed vocally on various stages throughout the state of Florida, and internationally. She says it is gratifying to bring joy and understanding through the gift of performing arts. And is thrilled to make her Slow Burn Theatre Company debut in such a poignant show, so close to home. Thank you to my Jewels for your continuous support.

JASMINE IACULLO (*Andrea, Storyteller*) is so excited to be joining the Slow Burn family. She currently attends North Broward Preparatory School, and is ecstatic to be making her professional debut. She is grateful to her friends and family for their endless support and would like to thank all those involved in *Once On This Island* for making this one of the most rewarding experiences of her life.

JEMARCUS RIGGINS (*Daniel, Storyteller*) is a recording/ performing artist who graduated from South Plantation High School located in Plantation, Florida and went to the University of Oklahoma for Musical Theatre. J is from Fort Lauderdale, Florida and developed a strong passion for music at the age of 7. J grew up singing in the church, which is where he found his calling. He believes that God has called him to bless and inspire his people through the gift of music. Some of his favorite roles include Donkey, from *Shrek the Musical*, and Don Lockwood, from *Singin' in the Rain*. J is a risk taker/hard worker who believes that your comfort zone is a happy place but nothing grows there so why not take the opportunity to grow?

JEREL BROWN (*Choreographer, Storyteller, Papa Ge US*) is a performer/choreographer from South Florida. He has done shows in Florida, Chicago, New York and Japan. Credits include *Universal Monsters Live* (Universal Studios Japan), *Ruined* (Gablestage) *Sweet Charity*, *Victor/Victoria* (Broward Stage Door) *West Side Story*, *Guys & Dolls* (The Wick Theatre) *Hair* (MNM Prod) *Rock Odyssey* (Adrienne Arsht Center) *Kinky Boots*, *Groundhog Day*, *A Christmas Story*, *Shrek*, *Priscilla*, *Memphis* (Slow Burn Theatre). He is also a dance instructor/choreographer for Next Stop Broadway. He would like to give a huge shout out to the cast and crew. He would also like to thank everyone for their continued support. Instagram: @jerelbrown7

KAREEMA KHOURI* (*Asaka, Storyteller*) is a graduate of A.M.D.A. in NYC & N.W.S.A. in Miami and recently was seen as the *Mistress of Purgatory* for Miami New Drama's 7 Deadly Sins. Received awards & recognition from Florida's Governor; Florida's Secretary of State at the Kremlin Palace in Moscow. Previous shows: *Working* (Caldwell) *Motherhood the Musical Tasha* (Miniaci) Disney's Festival of the *Lion King* (Hong Kong) *Disney Dreams*, *Hercules the Musical*, Mabel in *The Blues Brothers Show* Universal Studios (Japan), Rosa in *Respect* (Boston), Roberta in *Sista's* (Off Broadway NY), and *Sheila's Day* (Lincoln Center in NYC). Featured soloist for *50 Years of Rock & Roll with Neil Berg*. She treasures her family, husband Antoine, son's Kareem, Zenn, and London. Her mom Daisy and will always sing for her father, her guardian angel.

LILLIE THOMAS* (*Erzulie, Storyteller*) is excited to be back with her Slow burn family to make her Slow Burn Theatre debut! Prior to the shutdown caused by the pandemic, Lillie was in *Ragtime* rehearsals to portray Sarah. Past credits include: *Little Shop of Horrors* (*Audrey* - 2021 *Orlando Sentinel's Best of Theatre Best Leading Actress in a Musical*), *Guys and Dolls* (*Sarah Brown*), *Matilda* (*Miss Honey* - 2020 *Orlando Sentinel Critics's Choice for Best Leading Actress in a Musical*), *Romeo and Juliet* (*Juliet*), *IF/THEN* (*Kate* - 2019 Broadway

World Nominee for Best Supporting Actress), *Children of Eden* (Eve and Mama Noah - 2019 Orlando Sentinel Critics's Choice for Best Leading Actress in a Musical), *Thoroughly Modern Millie* (Muzzy van Hossmere), *Sondheim on Sondheim* (Soloist), *Man of La Mancha* (Antonia), *Hair* (Dionne), *Little Shop of Horrors* (Audrey II, 2018 Broadway World Nominee for Best Leading Actress; Crystal, 2016), *The Hunchback of Notre Dame* (Esmeralda), *Sister Act* (Deloris van Cartier). Incredible thanks to her family and friends for endless love and support, and God. @sillyillie1127

NATE PROMKUL (*Agwe, Storyteller, Daniel US*) is honored to be returning to Slow Burn with such an amazing team, cast, and crew! He is a South Florida based actor and recent graduate of New World School of the Arts (B.F.A. c/o 2017). His favorite recent credits include Anthony Hope (*Sweeney Todd*, Zoetic Stage), Lead Vocalist (*The Cook, The Thief, His Wife, and Her Lover*, Unigram Productions) and Dr. Jekyll/Mr. Hyde (*Jekyll & Hyde*, Colony Theater). He is beyond thankful to be a part of this experience, and to the people who have supported him always. To be able to share live art again is truly a blessing. Love always! Instagram: @natepromkul

NAYOMI BRAAF (*Storyteller, Ti Moune US*) is a SoFlo native Teaching artist, holding a BFA in Music Theatre from The Hartt School and a Masters in Arts Administration from the University of Kentucky. She is thrilled to be a part of this production of *Once on this Island*. Although she is no stranger to the Slow Burn Stage, she is really excited to be on it after the pandemic put things on pause. Her previous credits include *Little Shop of Horrors as Chiffon and Avenue Q as Gary Coleman* at MNM Theatre Company Martha in *Spring Awakening* at Area Stage, Dorothy in *The Wiz* at Broward Stagedoor, *Priscilla Queen of the Desert* as a Diva, and Ensemble of *Disaster!* and *Memphis* at Slow Burn.

NICOLE DIKUN (*Storyteller, Erzulie US*) is a local South Florida Actress, so happy to be back on stage joining the amazing cast of Slow Burn's *Once On This Island!* Her credits include Assistant Choreographer for *In The Heights* and The Narrator in *Murder Ballad* at Measure for Measure Theater Company; Mrs. Pink in *Reservoir Dolls* and Alysha/ Dance Captain With Outré; Muzzy Van Hossmere in Marquee Theater Company's *Thoroughly Modern Millie*; Ronette in *Little Shop of Horrors* (Slow Burn); Suzy in *Winter Wonderettes* (Sherlock Dinner Theater).

REYNEL REYNALDO (*Armand, Storyteller, Papa Ge US*) is thrilled to be back at Slow Burn doing *Once on this Island*; a show for the culture. A few theater credits include: Donkey in *Shrek*, Assistant Stage Manager for *Kinky Boots* (Slow Burn); Marq in *Puss in Boots*, Pepper in *Mamma Mia!* (Actors Playhouse); Graffiti Pete in *In The Heights* (Loxen Productions). Previous Dance credits include: Queen Latifah, FloRida, Pitbull, U.S. Open, Super Bowl XLIV, 2 Live Crew, Latin AMA's and Daddy Yankee. He endlessly thanks God, amazing mom, and District 8 Thespians. To all the boys and girls with big dreams; remember you can achieve anything. @iamreynelreynaldo

PRODUCTION TEAM

PATRICK FITZWATER (*Director*) is a ten-time Carbonell Nominee (six for Best Director and four for Best Choreography). He won a 2018 Carbonell for his choreography for *Memphis* and a 2013 Carbonell Award for his direction of *next to normal*. He is a three-time Silver Palm Award winning choreographer/director. Patrick is Artistic Director of Slow Burn Theatre and has directed all 55 of Slow Burn Theatre's shows, including the 2019 Carbonell recommended productions of *Jekyll & Hyde*, *You're A Good Man Charlie Brown*, *9 to 5*, *Priscilla Queen of the Desert*, *Shrek* and *A Christmas Story*.

MARLO RODRIGUEZ (*Assistant Director*) is a South Florida director and actor, with her Bachelor of Fine Arts in Theatre Performance from Florida Atlantic

WHO'S WHO



University. She is honored to have her debut with Slow Burn Theatre Company as Assistant Director in this production of *Once On This Island*. Marlo extends her deepest gratitude towards the brilliant creative team, and talented cast for all their hard work and commitment! She would also like to thank Patrick Fitzwater for his trust, support and guidance during this journey. Marlo's recent credits include *Lungs* (New City Players), *Miami Bus Stop Stories* (Juggerknot Theatre), *The Happening* (Art Prevails Project). You can expect to see her in Boca Stage's upcoming production of *Luna Gale*, running February 25th-March 13th.

EDEN MARTE (*Music Director*) is a South Florida native and is excited to be making his debut at Slow Burn Theatre. His credits include performing as a soloist with orchestra and headlining at the Chicago Improv festival. His most recent credit includes *Mamma Mia!* at the Wick Theatre. www.edenmarte.com

JACKIE LAWLOR* (*Production Stage Manager*) is excited to be back with Slow Burn for a fourth season after a very long intermission! Favorite credits include: *Kinky Boots*, *Songs For A New World*, *Groundhog Day*, *Shrek*, *Freaky Friday*, *Jekyll & Hyde*, *Rock of Ages*, *Wait Until Dark*, *Singin' In The Rain*, and *Baskerville*. Jackie would like to thank her family and friends for all of their love and support. Special thanks to Patrick, Matthew, and the entire cast and crew. Jackie holds a BFA in stage management from the University of Central Florida. Proud member for AEA. www.jackienlawlor.com

CLIFF PRICE (*Scenic Designer*) received his Bachelor's Degree in Landscape Architecture/Environmental Design from the University of Georgia. Recent productions: *Cabaret* (Rivertown Theater), *BIG* (The Garden Theatre), *The Legend of Sleepy Hollow* (The Orlando Rep), *Fun Home* (Theater West End), *Rudolph* (Titusville Playhouse), *Hello Dolly*, (The Henegar), *Head Over Heels* (Encore!). Recognitions and awards: "Orlando Best of Theater 2021" *Fun Home* (Theater West End) "Orlando Sentinel Critic's Choice 2021" *The Legend of Sleepy Hollow* (The Orlando Rep), "Orlando Best of Theater 2019" *Once on This Island* (Theater West End), *Sister Act* (*Osceola Arts*) Broadway World Regional, Best Scenic Design Awards -*Matilda* (Titusville Playhouse-2019), *25th Annual Putnam County Spelling Bee* (Encore!-2018) *Hairspray* (Encore!-2017). My Love and Thanks to Mike Beahm and Clay Price www.cliffpricedesign.com, IG: @cliffpricedesign, Facebook: Cliff Price Design

GEORGE JACKSON (*Lighting Designer*) is a freelance designer/programmer from Orlando and is happy to be designing his first show at Slow Burn Theatre. Recent designs include, *Sunday in the Park with George* at Palm Beach Atlantic University, *Camp Omigosh!* at the Orlando Repertory Theatre, and *The Bodyguard* at the Garden Theatre. Some of the many companies he has worked for include Walt Disney World, Universal Studios, Orlando Magic, Norwegian Cruise Lines, Bellator, and AEW Wrestling. George taught theatrical lighting at Valencia College and Palm Beach Atlantic University for several years and has an A.S. and A.A. Degree from Valencia College and a B.A. in Theatre from the University of Central Florida.

LENORA NIKITIN (*Costume Designer*) is happy to be joining Slow Burn Theatre for her return to Broadway Costume design. One of her greatest accomplishments was being nominated for the Henry Hughes Award for Costume Design of Cirque Dreams Jungle Fantasy on Broadway. Lenora would like to thank her friends and family and all who helped make this dream come true. Lenora is the owner/designer of NoraJune Designs designing and making costumes for Broadway Shows, Circus Productions, and Cruise Ships. Some of her favorite credits are: *The Producers*, *Cirque Dreams Jungle Fantasy*, *Cirque Dreams and Dinner*, *Cirque Dreams Holidays*, and *My One and Only*.

JAMEELAH BAILEY (*Props Designer*) is a freelance props designer based in the South Florida region. Her latest projects include: *The Cubans/A Wonderful World/ 7 Deadly Sins* at Miami New Drama, *The Amparo Experience* with Broadway

Factor, and *The Cook, The Thief, His Wife & Her Lover* at Faena Theatre. She is excited to work with Slow Burn Theatre on *Once on this Island* and is thankful for the wonderful opportunity. She would also like to thank her friends and family for their continued love and support.

STEPHANIE LOVERDE (*Makeup Artist*) is thrilled to be back in action creating and bringing to life her whimsical and interactive makeup designs. Although she has recently joined the Slow Burn team as a Makeup Artist, she has been an industry professional for over a decade. She has traveled near and far, doing looks from stage to screen and everything in between. She has a BA in Drama from Lynn University and Graduated top of class from Cosmix School of Makeup Artistry. Find out more out about her and her creations on Instagram: @stephcreatedit

ALEX FINE (*Technical Director*) is so excited to be Slow Burn Theatre Company's new Technical Director, joining the production staff of *Once on this Island* as his first show. Raised in Short Hills, NJ, and a graduate of the University of Southern California School of Theatre in Los Angeles, he has been living and working in the South Florida theater community for the past decade. Special thanks to MNM Theatre Company for helping to make this production possible, and to his family, near and far, for all of the constant love and support. Alex is eager to see what the future will bring with such an amazing company to grow alongside with and call home.

LYNN AHRENS won Tony, Drama Desk and Outer Critics Circle Awards and received two Grammy nominations for Broadway's *Ragtime*. For Twentieth Century Fox's animated feature film *Anastasia*, she was nominated for two Academy Awards and two Golden Globes. She and longtime collaborator Stephen Flaherty received the Oscar Hammerstein Award for Lifetime Achievement, and in 2015 they were inducted into the Theater Hall of Fame. Broadway: *Anastasia*; *Once On This Island* (Olivier Award, Best Musical; Tony nominations, Best Book and Score); *Seussical* (Grammy nomination); *My Favorite Year*; *Chita Rivera: The Dancer's Life*; *Rocky*; *Madison Square Garden's A Christmas Carol*; *Ragtime* (2010 Broadway revival). Off-Broadway and regional: Lincoln Center Theater's *Dessa Rose*, *The Glorious Ones* (both Drama Desk-nominated) and *A Man of No Importance* (Outer Critics Circle Award, Best Musical); *Lucky Stiff*; *Little Dancer* (Kennedy Center world premiere). Film and television credits include A «Christmas Carol» (NBC-TV); *Camp* (IFC Films); «Schoolhouse Rock» (ABC-TV) and others. (Emmy Award and four Emmy nominations). She is a Council member of the Dramatists Guild of America, a co-founder of the Dramatists Guild Fellows Program, and a Lilly Award winner for Lyrics. www.ahrensandflaherty.com

STEPHEN FLAHERTY is the composer of the Broadway musicals *Ragtime* (Tony, Drama Desk, OCC Awards, two Grammy nominations), *Seussical* (Grammy, Drama Desk nominations), *Once on This Island* (Tony nomination, Olivier Award, Best Musical) and *Rocky*. Additional Broadway includes *Chita Rivera: The Dancer's Life* (original songs) and Neil Simon's *Proposals* (incidental music). Stephen has also written four musicals at Lincoln Center Theatre: *The Glorious Ones* (OCC, Drama Desk nominations), *Dessa Rose* (OCC, Drama Desk nominations), *A Man of No Importance* (OCC, Best Musical, Drama Desk nomination) and *My Favorite Year*. Other theater includes *In Your Arms* (Old Globe), *Little Dancer* (Kennedy Center), *Lucky Stiff* (Playwrights Horizons) and *Loving Repeating: A Musical of Gertrude Stein* (Chicago's Jefferson Award, Best New Musical.) Film includes *Anastasia* (two Academy Award and two Golden Globe nominations), the documentary *After The Storm* and *Lucky Stiff*. Mr. Flaherty's concert music has premiered at the Hollywood Bowl, Boston's Symphony Hall, Carnegie Hall, the Guggenheim Museum and Symphony Space. This year celebrates Stephen's 32-year collaboration with lyricist-librettist Lynn Ahrens. Stephen and Lynn are members of the Dramatists Guild Council and co-founders of the Dramatists Guild Fellows Program. In 2015 they were inducted into the Theater Hall Of Fame. Upcoming: the stage adaptation of *Anastasia*. AhrensAndFlaherty.com.



We couldn't do what we do without you!

Sponsor's Circle \$20,000+

American National Bank
Anthony-Arthur Foundation,
Mariane DiPiero Pavelic
Broward County Division of
Cultural Affairs

Community Foundation
of Broward County
William H. Donner Foundation
Florida Division of Cultural Affairs

Funding Arts Broward
Josephine S. Leiser Foundation
United Way of Broward County

Producer's Circle (\$10,000-\$19,999)

Mark Chin-Lenn, MD & Kevin Pfeiffer
Kurt Liphardt & David Grasso-O'Brien
NBPS Music Boosters

The Salah. Foundation
Kennedy & Sandy Tate
United Jewish Federation of Broward County

Angel's Circle (\$5,000-\$9,999)

Amaturo Family Foundation
The Frederick A. DeLuca Foundation

Walter & Cheryl Lamb
Tom Moran

Director's Circle (\$2,500-\$4,999)

Frank & Frances Bolaños
Patricia Deering
Diverse Legal Solutions
Marty & Susanne Ellman
John Ettinger
Jim & Terry Hardacre
Mitch & Shelley Leibowitz

Charles Mociak
Tom Moran in Memory of
George Wentzler
Network for Good
Michael & Mary Ellen Peyton
Cheryn Purcell

Harris & Nicole Schwartzberg
Emily & Paul Singer
Family Foundation, Inc.
Mark Traverso & Conor Walton
Dr Philip & Julie Valent & Family
Michele & Eufrazio Volpe

Performer's Circle (\$1,000-\$2,499)

Kenlee Brill
Neil Burmeister & Bob Romano
Cynthia Christ & Stephen Strum
The Davids
Glenn Devitt
Hon. Stephen P. Driscoll
Enterprise Holdings Foundation
Claire Fair
Dr. Norma Jeanne Flack
Rori, Adam & Jackson Greenspan
The Gross Family
Joyce Z. Hunter

IBM Corporation
Jimenez family
Dixie Kirsch Family Foundation
Kristy Lamore & Duff Wehle
Lighthouse List Company
The List Connection, Inc.
Jennifer Lucas
Steven F Lutz
Michael Mckenzie
Media Source Solutions
Stan and Lisa Moss

Glenn & Debbie Myers
The Norman Family
Sandy and Art Phillips
Ryan & Marci Poliakoff
Andrea Sanders & Stephen Goldstein
Jody Sklar and Dana Fishkin
Pamela Sporing & Steven Altman
Mark Strauss
John Tambasco
Calvin Hsu and Kimberly Taylor
Michael Zynda

Designer's Circle (\$500-\$999)

Jon Alger
Atherton Family
Backer Aboud Poliakoff
& Foelster, LLP
Michael Ballaban & David Poulin
Boegem Family
Children's Services Council
of Broward County, Community
Foundation of Broward County,
The Frederick A. DeLuca
Foundation,

Health Foundation of South Florida,
The Jim Moran Foundation, and
United Way of Broward County
Carol-Lee Dolnick
Bill Korey
Jill Kratish
David Lazovitz, MD
Deborah Marks & Jeffrey Schwartz
Joyce Mcghee
Moksha Indian Brasserie

Bianca & Don Pucci
Angela & Robert Pulsifer
Jennifer Spillane
Dena & Alan Stern
Jodi & Paul Tanner
Lee Walter
Rhea & Ken Werner
Kenneth L West
George E. Longobardi

Theatre Guild (\$150-\$499)

Joseph T. Abate, DMD
John Actman
Actors' Equity Foundation
Bill & Jihong Adams
Deborah Brown
Wendy Buckler
Isolde Cahill
Jane & Ray Caragher
Chess/Riley Family
Dan Clancy
Megan Connolly
Jayne Cople
Kevin Czarnota
Anonymous

In honor of students everywhere
from: Diana Lynn Dixon
Joanna Drowos
Greg Dudzek and Jayant Goyle
Lois & Alvin Entin
Ken Fisher
Thomas Fleming
Sue & Joe Fry
Jonathan Haider
Thomas Hampton
Mary Ellen Harris
Lori Hartglass
William Hayes & Sue Ellen Beryl
Jorge Hernandez & James Kane

Jane Hirz
International Yacht Charter Group
Julie Clark Ireland
Nicholas James
David Jobin & Angel Burgos
Dr. Janet Duguay Kirsten
Lynn Kobrin
Monica Korinko
David Latham
Jan & Allen Lev
David M Lile
Todd Lind
Susan Lochrie
Linda Marzocco

DONORS



Theatre Guild (\$150-\$499) cont'

Tina Mills
Charles Morton
Sarah Mounedji
Lisa Nazzaro
Kevin OConnor and Leon Rudolph
David Peery
PJP Photography
Karen & Scott Rassler
Dr Scott Robertson
Robin & Michael Robins
The Rodman Family
John Romano
Sally Ruttger

Mohammad Sadauna
Mr. & Mrs. Paul Schear
Schnabel Family
Sherry Schneider
Bill & Lisa Schultz
Ruthie & Rudy Schwartz
In honor of Ruthie & Rudy's 65th
Wedding Anniversary
Stanley & Bonnie Schweiger
Dawn Silver
Drazia & Harvey Simon
Sandra Simon
Site Florida & Caribbean Chapter
Rosalie Small

Anthony Snyder
Dennis St. Jean
Holly Steamer
Patty Stevens
UCMAS, Mental Math Schools
The Valle Family
David Vershel
Kenneth Volpp
Gregg & Liz Wallick
Brandon Weiss
Raquel White
Sherry Woodhouse
Bernard Kilkelly

CARBONELL AND SILVER PALM AWARDS WINNER



SLOW BURN THEATRE CO. 2021/2022 SEASON



JOIN US FOR OUR HOTTEST SEASON YET
Single tickets ON SALE NOW!

TICKETS at BrowardCenter.org/Slowburn

Subscriptions: 954.468.3280

Single Tickets: Ticketmaster 954.462.0222

Sign up for
the latest
Slow Burn
news



BROWARD CENTER
FOR THE PERFORMING ARTS

slow burn
THEATRE CO.



We are proud to support
the Slow Burn Theatre!

As a local bank partnering with a locally based professional theatre company, we celebrate our shared commitment to award-winning excellence, dedication to diversity, and allegiance to our community.



Ginger Martin
President and CEO

*“We’re not on every corner,
but we’re always in **YOUR** corner!”*



www.americannationalbank.com

4301 North Federal Highway
Oakland Park, Florida 33308
(954) 491-7788



Member FDIC