

TECHNICAL SPECIFICATIONS

AMATURO THEATER



BROWARD CENTER
FOR THE PERFORMING ARTS

Fort Lauderdale, Florida
January 2024

TABLE OF CONTENTS

GENERAL CONTACT INFORMATION	3
BACKSTAGE SECURITY CREDENTIALS.....	4
MAP & DIRECTIONS	6
TRUCK, BUS & VEHICLE PARKING	6
SITE PLAN.....	7
LOADING DOCK INFO	10
SEATING CAPACITY	11
SEATING CHART	12
STAGE SPECIFICATIONS.....	13
ORCHESTRA PIT / STAGE THRUST INFORMATION	13
STAGE DIMENSIONS & GROUND PLAN	14
RIGGING SPECIFICATIONS / OBSTACLES.....	16
SOFTGOODS INVENTORY	16
HANGING PLOT / LINE SCHEDULE	17
SOUND AND COMMUNICATIONS	19
LIGHTING INFORMATION	24
POWER DISTRIBUTION	24
GENIE LIFT	24
DIMENSIONAL INFORMATION	25
ORCHESTRA EQUIPMENT / CONCERT SHELL INFORMATION	30
DRESSING ROOMS/SUPPORT SPACES.....	31
BACKSTAGE MAP.....	33

Amaturo Theatre

at the

Broward Center for the Performing Arts

201 Southwest 5th Avenue
Fort Lauderdale, FL 33312
Main Office (954) 522-5334 (M-F 8:30A-5:30P)
Main Fax (954) 468-2549
Box Office (954) 468-3338

PRODUCTION

Director of Production	Herman Montero	(954) 468-2557	hmontero@browardcenter.org
Production Manager	Christopher Jahn	(954) 765-5802	cjahn@browardcenter.org
Production Supervisor	Christina Baroniel	(954) 468-3317	cbaroniel@browardcenter.org
Production Supervisor	Halle Kilman	(954) 765-5819	hkilman@browardcenter.org
Production Coordinator	Jessica Mendoza	(954) 468-3319	jmendoza@browardcenter.org
Production Admin Assistant	Oriana Urdaneta	(954) 468-6906	ourdaneta@browardcenter.org
Stage Door Visitor's Desk		(954) 468-3323	

EVENT SERVICES

Vice President of Operations	Shelly Bradshaw	(954) 468-2696	sbradshaw@browardcenter.org
Director of Event Services	Pablo Urquilla	(954) 468-3313	purquilla@browardcenter.org
Director of Operations	Kerry McCloskey	(954) 414-6905	kmccloskey@browardcenter.org
Event Services Coordinator	Nikki Lyon	(954) 660-6327	nlyon@browardcenter.org

STAGE LABOR - I.A.T.S.E. Local 500

The Broward Center for the Performing Arts employs members of I.A.T.S.E. Local 500 for all productions in the Amaturo Theatre. For further information, please contact Production Staff for labors rates and work rules.

Head Carpenter/Steward	Robert Vega	(305) 342-4361	rvega@browardcenter.org
Head Audio	Dan Donato	(561) 702-6730	ddonato@browardcenter.org
Head Electrician	Quanikqua Bryant	(786) 501-5559	qbryant@browardcenter.org
House Head Assistant	Franco Seminario	(702) 462-3940	gseminario@browardcenter.org

ADDITIONAL CONTACTS INFORMATION

Vice President of Programming	Matt McNeil	(954) 468-3312	mmcneil@browardcenter.org
Director of Programming	Jill Kratish	(954) 468-3295	jkratish@browardcenter.org
Talent Buyer	Joy Dietz	(954) 468-3318	jdietz@browardcenter.org
Director of Guest Services	David Dillon	(954) 468-3305	ddillon@browardcenter.org
Director of Security	Tom Harrington	(954) 660-6356	tharrington@browardcenter.org
Admin. Mgr F&B – Merch	Mark Deuser	(954) 660-6387	mdeuser@browardcenter.org

VENUE ACCESS

All visitors must enter the building through the Stage Door entrance, located at the southwest corner of the rear of the building facing 7th Ave. When you arrive, please proceed to check in at the Visitor's Desk.

All Performers and Support Team will be:

- Welcomed to wear face coverings at all times in all public and common areas except while onstage performing or in individual dressing rooms with the door closed.
- Required to practice good hand washing hygiene.
- Expected to follow all local public health regulations regarding preparation and distribution of food. Eating and drinking should be prohibited anywhere in the venue other than designated areas.

Please note:

- No visitors will be allowed backstage unless deemed essential and have received prior approval from the touring company. Essential visitors include persons working directly with the production.
- Autograph signings, meet-and-greets and backstage tours policy will be set by the visiting company.
- The venue may be shared with other shows and/or organizations. The venue will provide cleaning between events in shared (ex. hallways, bathrooms, green rooms).

Performers and support staff who are unable or unwilling to comply with these policies will not be allowed on the Broward Center campus.

GUEST ENTRY

A reminder to all artists, road crew and touring companies that guests using the artist's comp tickets will not receive the *Know Before You Go* emails.

Please be advised that it is the responsibility of the ticket purchaser to communicate these policies to whomever they may be providing tickets. Performance ticket holders who do not comply with these policies may be required to leave the theater without refund.

BACKSTAGE CREDENTIALS

To increase the safety of our backstage environment, the Broward Center for the Performing Arts (BCPA) will be requiring all BCPA staff, stagehands, vendors, performers and their respective representatives to have and display a credential at all times while in any of our backstage areas.

CREDENTIAL CRITERIA

Credentials are to be produced, maintained, distributed and collected by the entity performing in a BCPA venue. Although it would be optimal to have every individual's name and photo on a credential, this may not be feasible in all situations. At a minimum, the credential must have the following characteristics:

- Credit card size or larger
- Include the name and logo of their organization
- Plastic, Sticker, or laminated
- Affixed to a belt-style clip or lanyard
- Be difficult to easily replicate



DISPLAYING AND WEARING CREDENTIAL

- Present credential at the Visitor's Desk
- Conspicuously wear credential while backstage
- Everyone must have their own credential
- Provide a sample copy of credentials to BCPA Venue, Production and Security in advance
- Credentials are NEVER expected to be worn on stage

EXCEPTIONS

- Headliner artists who remain on tour buses or who arrive immediately prior to showtime are not expected to display/wear a credential
- Children performing in recitals or BCPA Education productions are not expected to display/wear a credential, but must be accompanied and escorted by someone wearing credentials

MAP & DIRECTIONS

The Broward Center is conveniently located in the Riverwalk Arts & Entertainment District in downtown Fort Lauderdale, equidistant between Dade and Palm Beach Counties and can be reached by several routes.

From Interstate-95:

Exit at Broward Boulevard, Go east.

From Florida Turnpike (southbound):

Exit at Sunrise Boulevard, Go East to South-bound I-95, exit Broward Boulevard, Go east.

From Florida Turnpike (northbound):

Exit at I-595, Go East to North-bound I-95, exit Broward Boulevard, Go east.

To Backstage Parking Lot:

From Broward Boulevard turn right (South) onto SW 7th Avenue (Avenue of the Arts). Turn left at West Las Olas Blvd (the second light). Take an immediate left into the backstage lot security gate. Push the buzzer to contact guard. Identify yourself and guard will let you enter.

To Parking Garage and Valet:

Broward Boulevard. Turn South onto SW 5th Avenue. The Arts and Science Parking Garage is on the immediate right, or, proceed straight ahead, cross 2nd Street (Himmarshee St.) and continue to the top of the hill for valet service.

From Fort Lauderdale Airport to Backstage Lot:

Take the "US1 / Federal Highway Northbound" exit out of the Airport. Travel North on US1 to SE 17th Street Causeway. Turn left (West) and go to SW 4th Avenue and turn right (North). SW 4th Avenue will become SW 7th Avenue at the bridge. Go over the bridge, turn right at West Las Olas Blvd . Take an immediate left into the backstage lot security gate. Push the buzzer to contact guard. Identify yourself and guard will let you enter.

North Gate - Trucks going to Loading Dock:

From Broward Boulevard turn South onto SW 5th Avenue. Turn right at Second Street (Himmarshee Street). The gate entrance to back-stage lot is on your left. Push the buzzer to contact guard. Identify yourself and guard will let you enter.

GPS Address (do not use for anything else!)

To the backstage Security gate:
641 West Las Olas Boulevard
Fort Lauderdale;

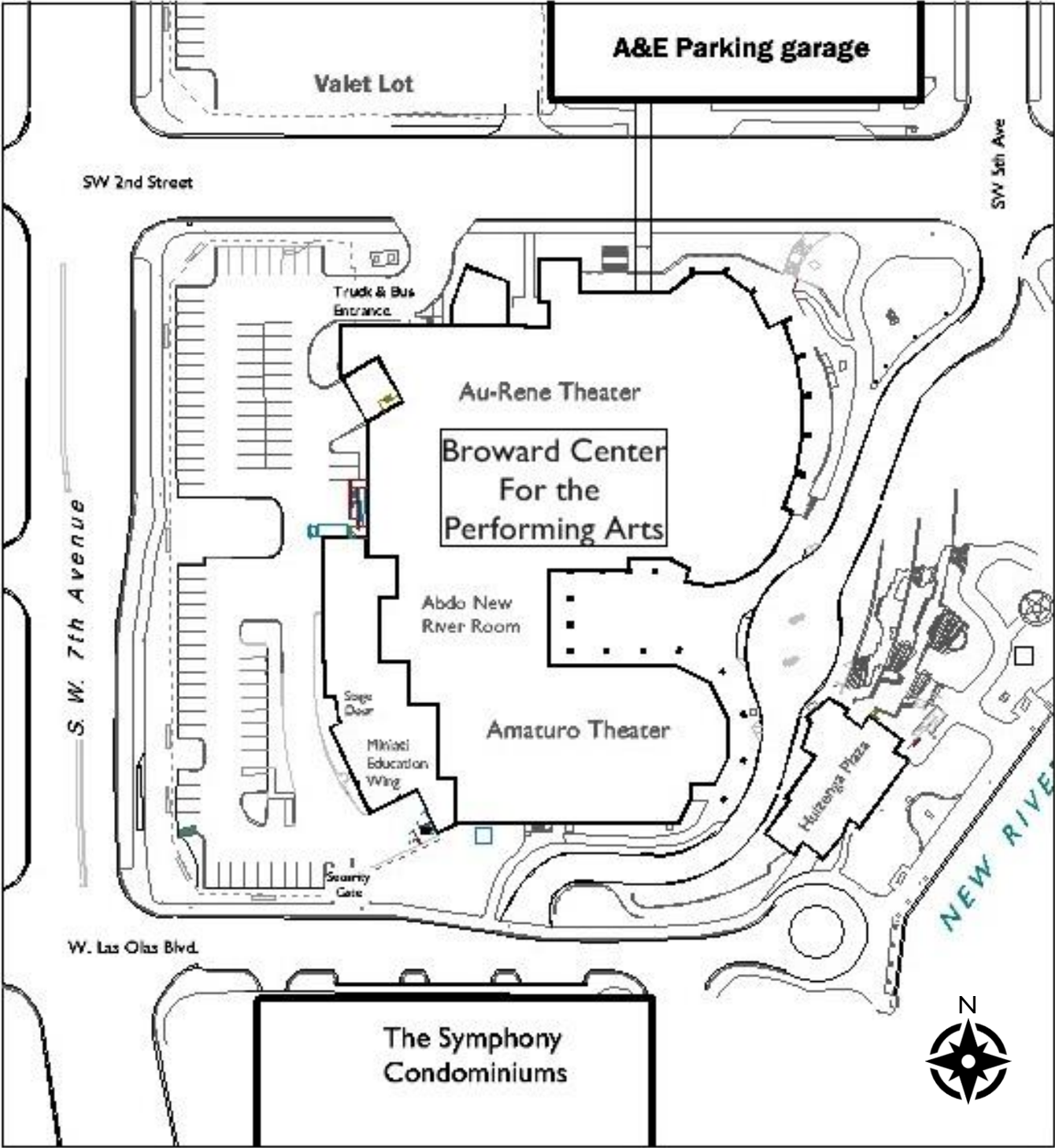
To the North Gate (truck & bus parking)
582 SW 2nd Street
Fort Lauderdale FL

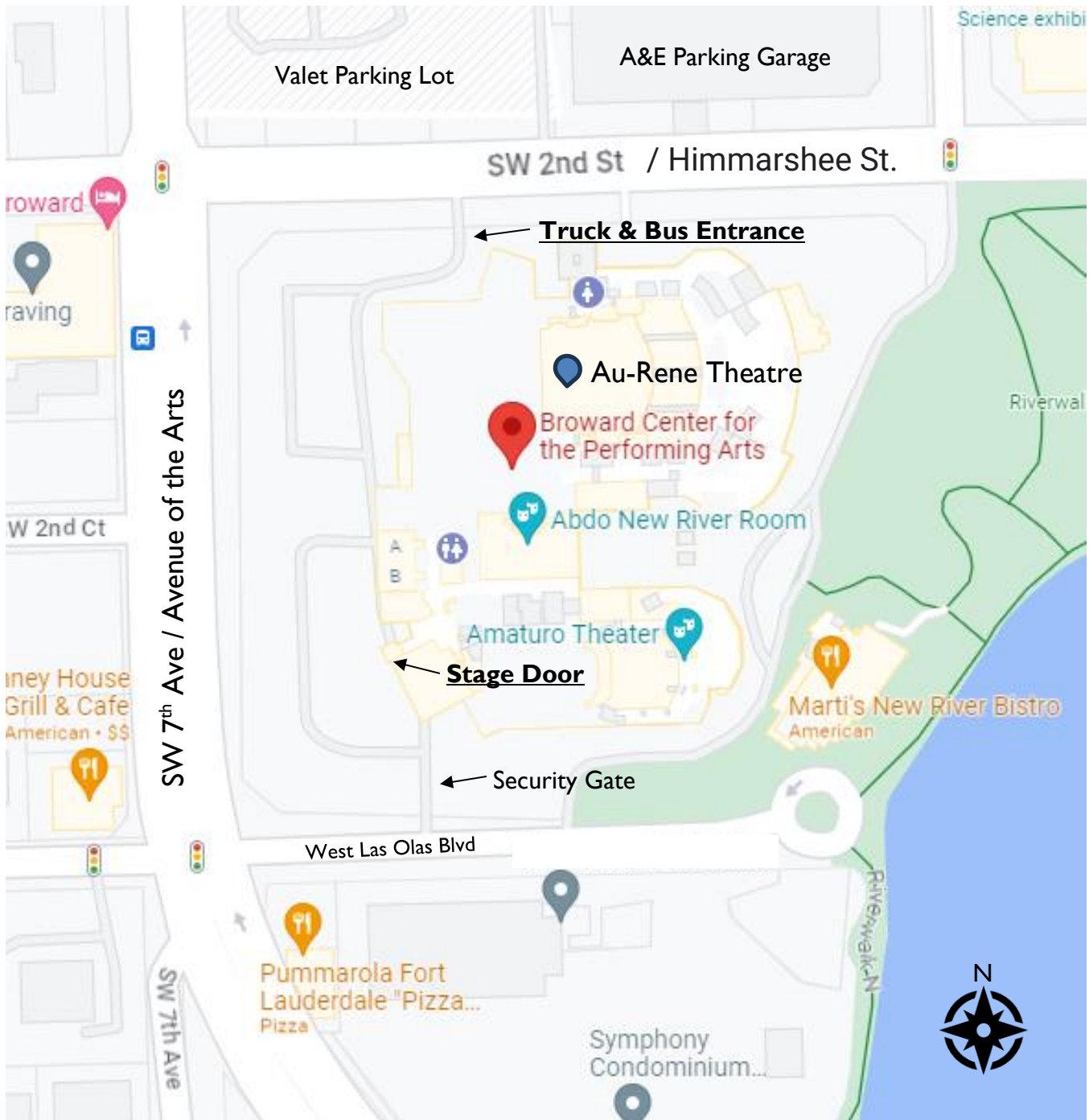
TRUCK, BUS & VEHICLE PARKING

Truck & Bus Parking on site is limited. There is parking available directly backstage in the lot for only 10 cars and additional parking available for 40 cars in the Arts and Science parking garage located across the street from the theatre. All parking arrangements must be discussed with Production Staff prior to the event for necessary passes and badges.



Broward Center Site Plan



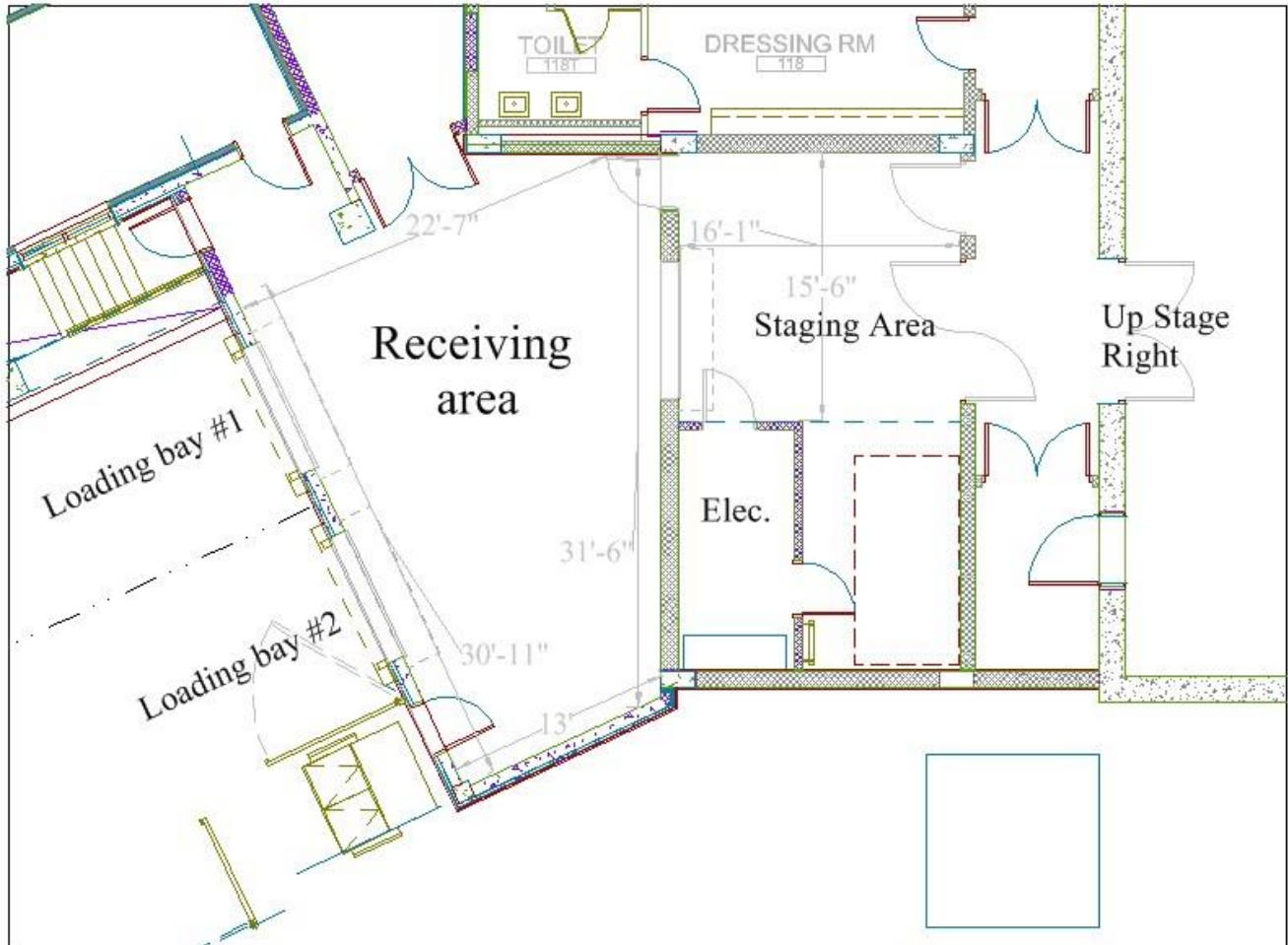


BCPA Parking Lot



LOADING DOCK

The Amaturio Loading Dock is located at the southwest corner of the building at S.W. 7th Ave and Las Olas Boulevard, but trucks must use the entrance on the north end of the parking lot on Himmarshee Street. There are two loading bays. The dock is 3' high, and the receiving doors are 8' wide by 8' high. The doors from the receiving area onto the stage are 7'-6" w x 25' h'.



The staging area is used to store the Amaturio's orchestra shell, as well as other equipment, depending on activities within the building. This will not impede loading equipment into the theater, but if you need that space during your event, please discuss with the Production Department in advance of your event.

Prior notice is necessary if the dock will be accommodating a tractor trailer longer than 40'; part of the lot must be reserved so the truck can maneuver.

Shore Power is available (inside the receiving area long shared wall with the electrical closet), but you must supply your own tails.

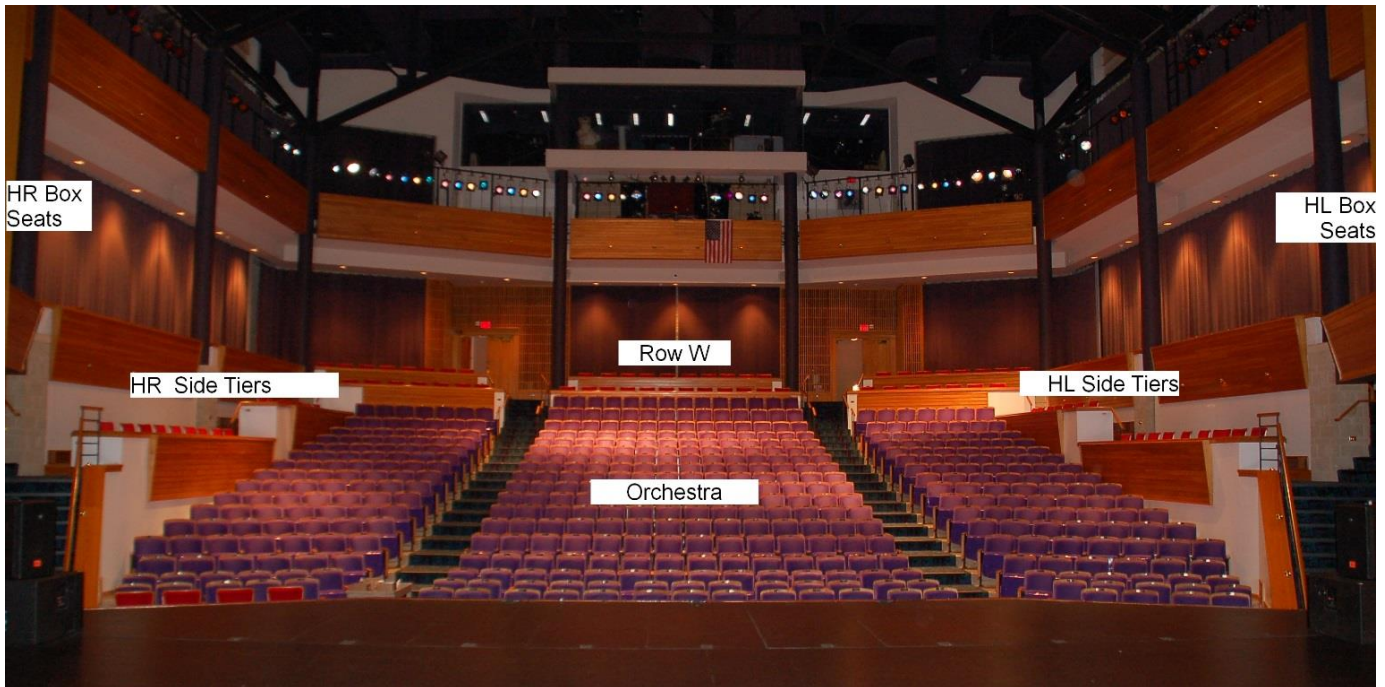
150' is needed to reach the bus parking spot from the loading dock.



SEATING INFORMATION AND CAPACITY

(MAXIMUM SEATING CAPACITY IS 582 SEATS (See seating map on follow page)

Orchestra Section	Rows A – T	488 seats
Side Tiers	Rows V – W	90 Seats
Box Seats		8 Seats
Total 582 seats		



CENTER



STAGE SPECIFICATIONS

STAGE FLOOR is a semi-sprung floor with double layer tongue and groove plywood on aluminum sleepers over rubber blocks, and finished with black masonite/bennelex. The rubber blocks are surrounded by a steel channel which limits over-decompression. Any damage to floor incurred by a production must be restored.

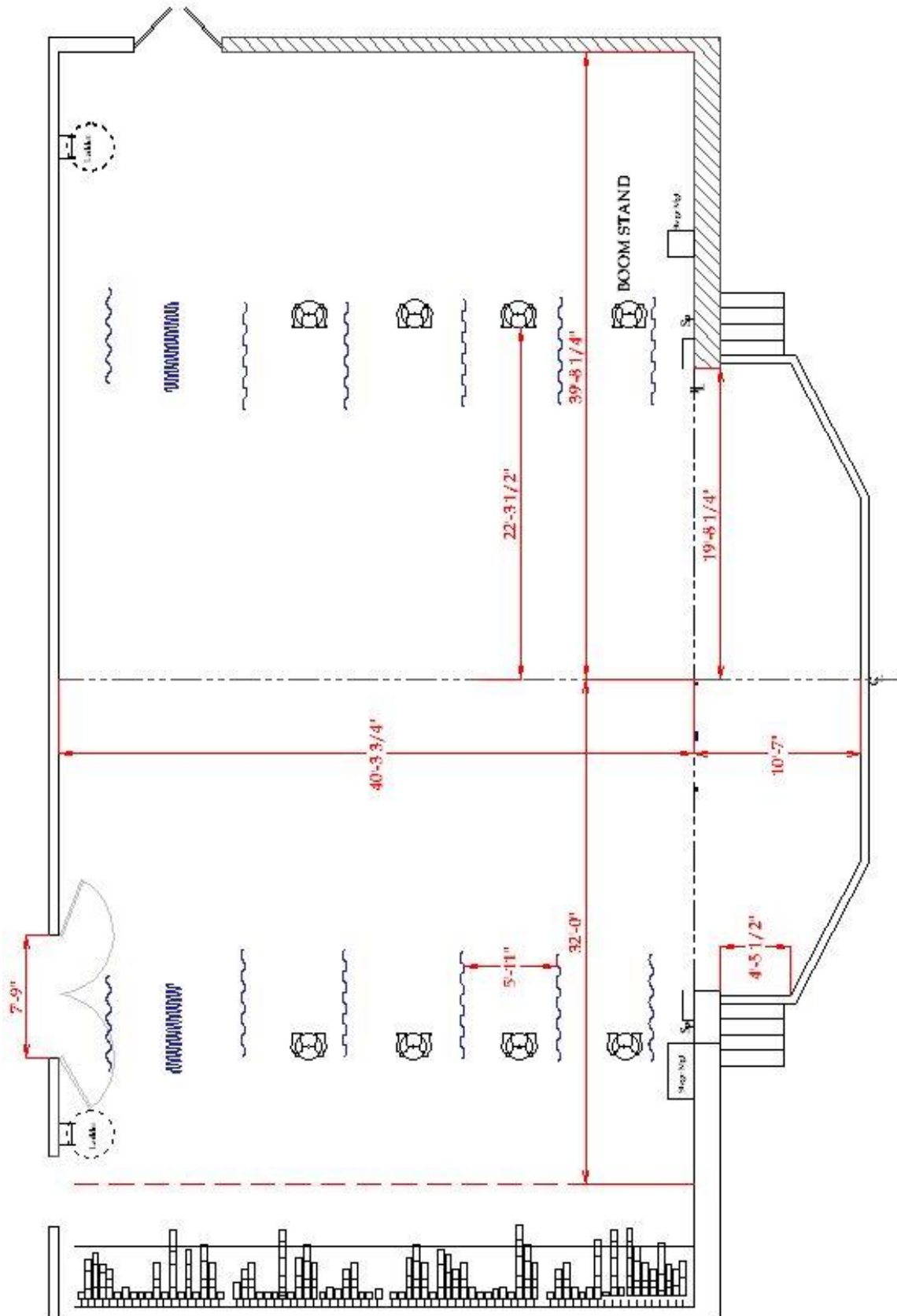
HEIGHT OF GRID	50'
HEIGHT OF PROSCENIUM	25'
WIDTH OF PROSCENIUM	39' 10"
HEIGHT OF GALLERIES	
Upper Loading Gallery	50'
Middle Loading Gallery	26' 6"
Pin Rail SL	25' 5"
DEPTH OF STAGE (from Plaster Line)	40'
WIDTH OF STAGE	75'-6"
Width of stage (center to SR)	32'
Width of stage (center to SL)	39' -6"
CENTER STAGE TO PINRAIL SR	36'
APRON (from Plaster Line)	1' -7"
(from House Curtain)	2' -7"
FULL THRUST (from Plaster line)	10' -7"
(from House Curtain)	11' -7"
HEIGHT OF STAGE (seating level to stage level)	3' -4"

ORCHESTRA PIT

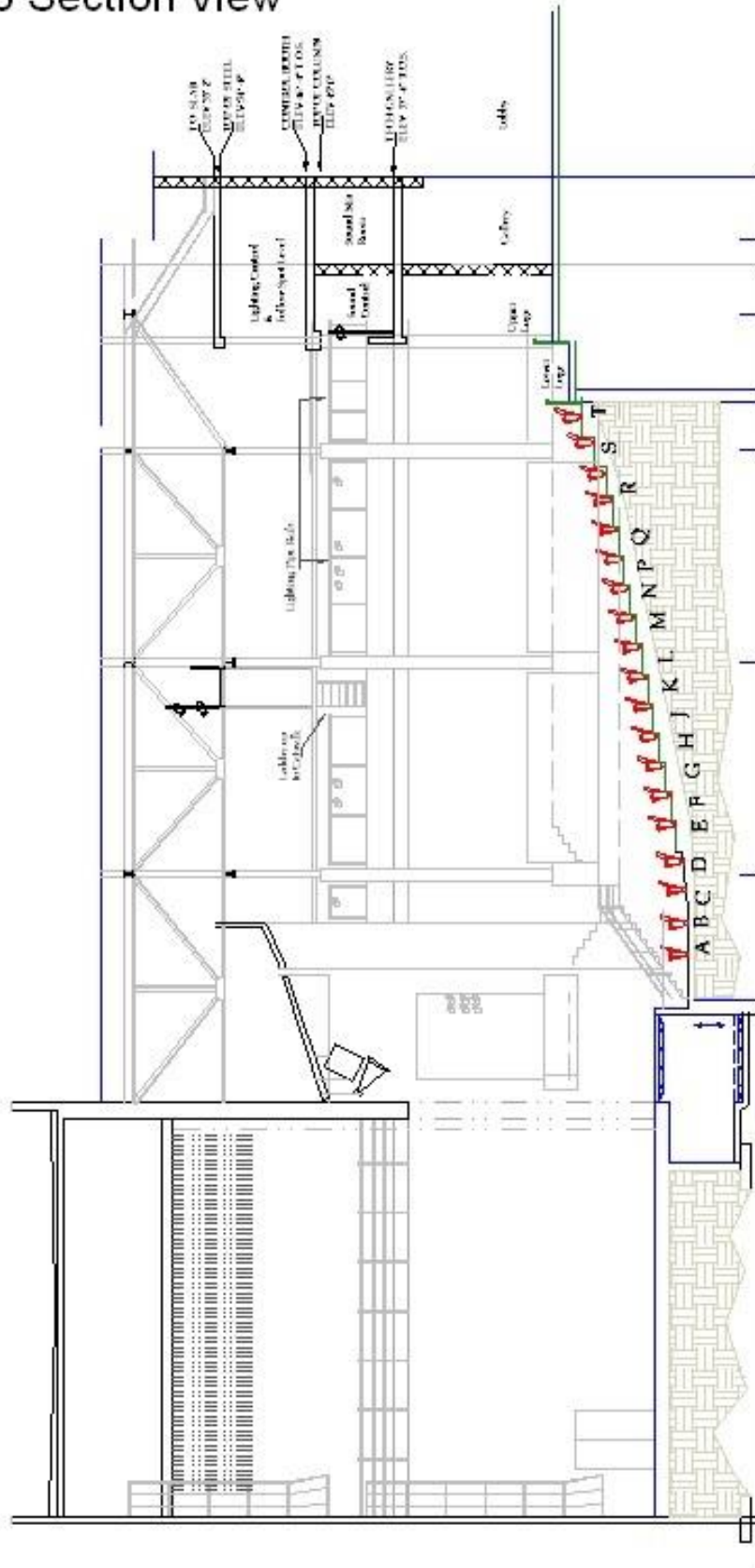
The Pit has a cover that extends the stage apron to 10' -7". This cover consists of 15 pieces that are manually moved down to create the floor of the Pit for use. The Pit under-hang is 5' -6"

Opening (Stage Edge to DS Pit Wall)	9'
Overall Dimensions (including pit under-hang)	40' x 14' 6" (D shaped)
Approximate Capacity of Musicians	35
HEIGHT OF PIT (pit level to stage level)	8' -3"

STAGE DIMENSIONS & GROUND PLAN



Amaturo Section View



RIGGING SPECIFICATIONS

Single purchase counterweight, hand-operated line sets operated from the deck stage right.

NUMBER OF LINE SETS	73 line sets, 6" on center
GRID HEIGHT	50'
TRAVEL DISTANCE	48'
MAX WEIGHT PER ARBOR (above pipe weight)	750 lbs
TOTAL WEIGHT AVAILABLE	102,200 lbs
LENGTH OF BATTENS	48'
TAB PIPES (5 pairs)	26' off Center SL & SR

HOUSE CURTAIN is a manual counterweight guillotine center split velour curtain located 5" upstage from smoke pocket. Curtain is operated from stage level down stage right and is not part of the operating rail. House Curtain is permanent and cannot be moved or removed.

Midstage Blackout Drop and Traveler:

Please note if you are interested in moving the midstage blackout drop (LS 29) or the Traveler (LS 61), this will require an additional crew call and additional labor for moving and resetting the drop to its original position.

SOFT GOODS INVENTORY

- 6 black velour borders (10' h x 48' w)
- 12 black velour legs (27' h x 10' w)
- 8 black velour tabs (27' h x 4' w)
- 1 black velour split traveler curtain (27' h x 45' w)
- 2 black velour curtains (27' h x 45' w)
- 1 black sharks tooth scrim (27' h x 48' w)
- 1 white cyclorama (27' h x 48' w)

Hanging Plot (Updated 8/22/23)

SHOW:				
Line Set #	Position	House Hang	Show Hang	Weight
	0"	Plaster Line (Smoke Pocket DS)		
	6"	House curtain		
1	2'0"	#1 black border & choir mics		
2	2'6"	#1 black legs		
3	3'0"	Projector Pipe		
4	3'6"	#1 Electric		
5	4'0"			
6	4'6"			
7	5'0"			
8	5'6"			
9	6'0"			
10	6'6"	#1B Electric (movers)		
11	7'0"			
12	7'6"			
13	8'0"			
14	8'6"	#2 black border		
15	9'0"	#2 black legs 19'/extra masking		
16	9'6"			
	10'0"			
17	10'6"	#2 Electric w/ LED's		
18	11'0"			
19	11'6"			
20	12'0"			
21	12'6"			
22	13'0"			
23	13'6"			
24	14'0"	#2C Electric (movers)		
25	14'6"			
26	15'0"	#3 Black Border		
27	15'6"	#3 black legs 19'		
28	16'0"	9'x16' Screen (with rear projection)		
29	16'6"	Midstage - Blackout Drop		
30	17'0"			
31	17'6"	#3 Electric		
32	18'0"			
33	18'6"			
34	19'0"			
35	19'6"			
	20'0"			

Line Set #		House Hang	Show Hang	Weight
36	20'6"			
37	21'0"			
38	21'6"	#4 black border		
39	22'0"	Traveler Track Storage		
40	22'6"	#4 black legs 19'		
41	23'0"			
42	23'6"			
43	24'0"			
44	24'6"	#4 Electric		
45	25'0"			
46	25'6"			
47	26'0"			
48	26'6"			
49	27'0"			
50	27'6"			
51	28'0"	Traveler Track Storage		
52	28'6"	#5 black border		
53	29'0"	#5 black legs 19'		
54	29'6"			
	30'0"			
55	30'6"			
56	31'0"			
57	31'6"			
58	32'0"	#5 Electric		
59	32'6"			
60	33'0"	#6 Border		
61	33'6"	Traveler - Blackout Drop		
62	34'0"	# 6 Black Legs		
63	34'6"	#6 Electric		
64	35'0"			
65	35'6"			
66	36'0"			
67	36'6"			
68	37'0"	Black Scrim		
69	37'6"	Stardrop		
70	38'0"	White filled scrim-CYC (can be used for front projection)		
71	38'6"	Old Blackout Drop		
72	39'0"	9'x12' Screen (with rear projection)		
73	39'6"	Rug Storage		

SOUND AND COMMUNICATIONS

SPEAKER CONFIGURATION

The Amaturio Theater has a stereo line array system, flown flanking the proscenium opening to cover the entire auditorium, with a flown sub array in the center.

Main Arrays

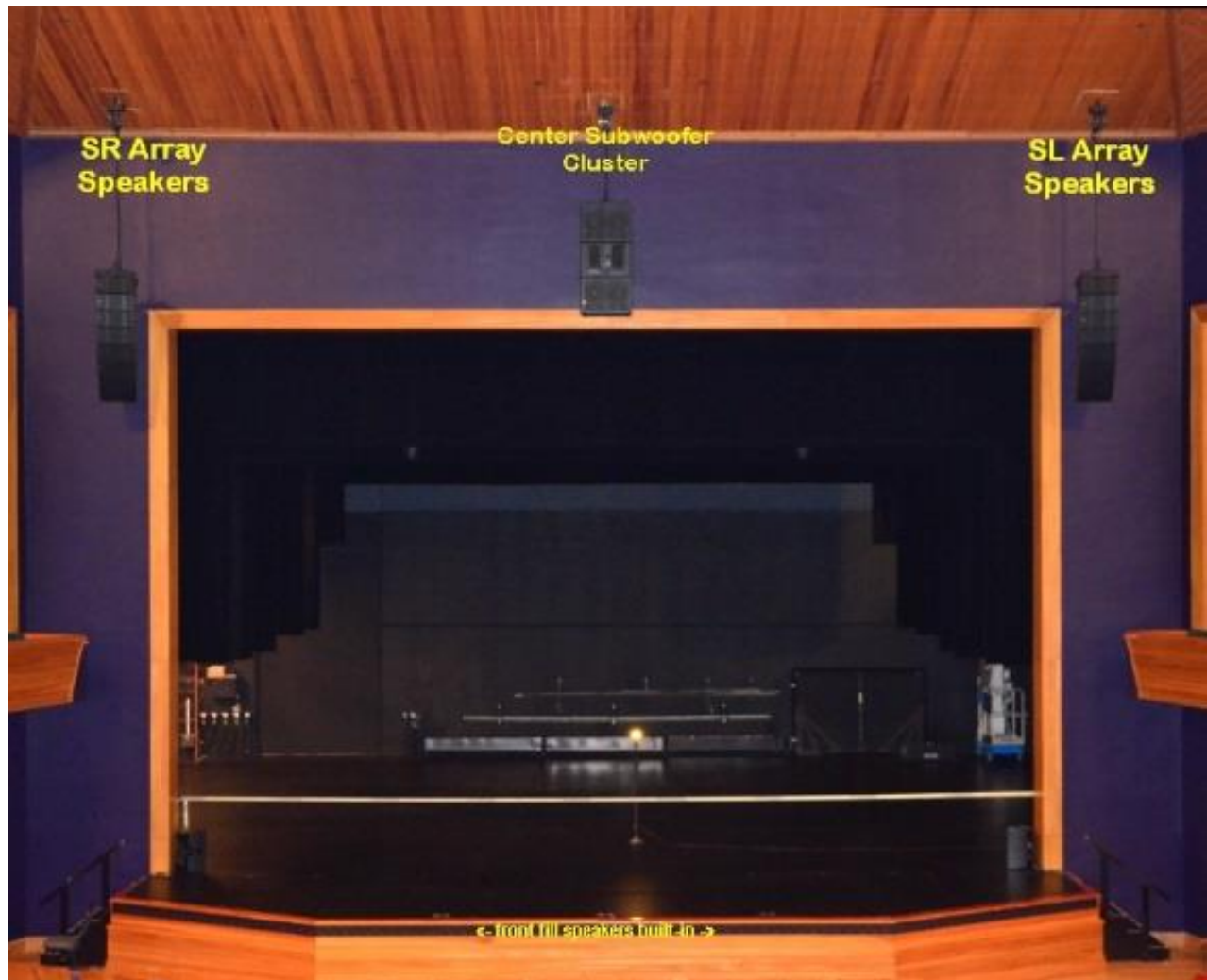
The primary speaker system consists of a Meyer Stereo Line Array with eight (8) MINA Compact Array Speakers per side.

Sub Array

The sub-woofer array consists of three (3) Meyers 500-HP compact high-power subwoofers.

Front Fills

The front fills consist of 98 JBL 8110h speakers built into the lip of the stage.



Effects Speakers

8- EAW LC12 (mounted on side and rear walls of the theater)(wired for Surround Sound)

SOUND MIX POSITIONS

There are two mixing position available in the Amaturro Theatre; the primary position is Row W, at the back of the house. The Alternate position is located along the center of the rear wall, in the Tech Gallery. It is fully open to the room. (See photo on page 20)

FRONT OF HOUSE CONSOLE

- (1) Yamaha Rivage PM-5 at FOH
- (1) Yamaha DSP-RX Engine at FOH
- (8) Omni inputs, (8) Omni outputs available at FOH

SOURCE GEAR

- (2) Sony Mini Disc machines with Auto Pause
- (1) TASCAM CD-RW901MK2 CD player/recorder

STAGE I/O

- (2) Yamaha RIO 32x24-D2 at SL. (64 inputs, 32 outputs available)
- (1) Tio 1608-D 16x8 at SR (16 inputs, 8 outputs available)

OUTBOARD COMPONENTS

- (2) Tascam CD Players rack mounted at FOH.
- (1) Minidisk player
- (1) Dante 2-Channel USB Audio Dongle.
- (1) Dante Bluetooth Audio Dongle.

SYSTEM OUTPUTS: HOUSE ONLY:

- (1) RSIO64-D: 24 System Outputs in Amp Room.
- The system is running at 48k.

MONITORS & MICROPHONES

HOUSE MONITORS & MICROPHONES:

House Monitor Package

The Amaturio Theater is equipped to send five monitor mixes from the front of house console that we can send to 6 JBL MRX500 wedges. If more mixes are required, a separate monitor desk and operator will need to be brought in.

House Wireless Microphones

The Amaturio Theater is equipped with an Axient system.

- (2) 4-Channel Shure Axient ADAQ
- (8) Shure AD2/SM58 Handheld Transmitters
- (8) Shure ADI BodyPack Transmitters
- (1) 4-Channel Shure ULXD4Q
- (4) Shure ULXD2/SM58 Handheld Transmitters
- (4) Shure ULXD2 BodyPack Transmitters
- (4) Shure RPW184/KSM9 Microphone Cartridge

MICROPHONES

WIRED MICROPHONES:

<u>Manufacturer/Model</u>	<u>Quantity</u>	<u>Manufacturer/Model</u>	<u>Quantity</u>
Shure KSM 9	8	Sennheiser ME 66	4
Shure KSM 141	6	Sennheiser MD421U	3
Shure KSM 32	6		
Shure Beta SM57	9	Earthworks PM 40	2
Shure Beta SM58	7	Electro Voice RE320	2
Shure SM81	5	Electro Voice RV18	3
Shure SM87A	6	Electro Voice RE20	4
Shure Beta 98A	8	Electro Voice DS35	4
Shure Beta 91	2	Whirlwind PB 12	2
Shure Beta 52	2	Beyer M160	4
Shure Beta 181S	4		
Shure Beta 56	6	Audio Tech AT857QMa	3
Shure Beta 57A	8	Audio Tech AT857QMLa	1
Shure WA310	12	Crown PCC 160	8
AKG C414 XLII/ST	2	Crown PZM LP6	3
AKG C214	2	Crown PZM 6RB	4
AKG C535	2	Crown GLM 200	2
Countryman ISOMAX 2	12	B & K 401 I	2
Countryman ISOMAX 2H	12		
Countryman M4HP5RF24EB	6		

WIRELESS MICROPHONES:

There are six (16) channels of Shure ULXD Diversity Receivers, divided into two racks

- 8 ULXD receivers per rack
- 4 handheld transmitters with SM58 heads
- 8 Bodypack transmitters

DIRECT INPUT BOXES:

10	Countryman FET 85	Passive DI
6	Radial Engineering JDI MKIII	Passive DI
4	Radial Engineering JPC	PC DI
2	Whirlwind PCDI	PC DI

BACKSTAGE COMMUNICATIONS

The Amaturro Theatre is equipped with a Clear Com 2 channel intercom system; stations are located in the control booths, spot booths, and in the wings (including the fly rail).

- 1 MS-702 2-Channel Headset/Speaker Main Station
- 7 RS-701 wired belt pack (single channel)
- 1 RS702 wired belt pack (double channel)
- 1 WBS670 Wireless Intercom Base Station
- 6 WTR-670 Wireless belt pack (single channel)

SHARED MONITORS & MICROPHONES:

NOTE: The following Monitor Equipment and Microphone package is shared with other venues at the Broward Center and may not be available for your event unless prior arrangements have been made with Production Staff in advance of your event.

MONITOR CONSOLE:

Yamaha PM5D-RH

MONITORS:

- (5) Monitor Mixes on stage.
- (6) JBL MRX500 monitors wedges.
- (5) QSC Amplifiers for monitor mixes.

NL4 Outputs for Monitors are located:

- (4) NL4 Outputs SL
- (1) NL4 Output USL

MONITOR SPEAKERS:

- 2 Shure in-ear monitors PSM700 w/ E3 SHU P7TRE3
- 10 powered wedge speakers Meyers UM100-P
- 2 Stage monitors Meyers USM-100P
- 4 Side Fill speakers Meyers UPQ-IP
- 4 powered subwoofer – dual 10” Meyers UMS-IP
- 2 EV I502 ER
- 6 JBL MRX 512M
- 5 EAW VM12
- 4 Galaxy hot spots
- 7 Anchor AN 1001 X
- 1 Anchor AN 1000 self-powered
- 1 Galaxy Audio Hot Spot PAIII self-powered hot spot

Portable Microphone Splitter:

- 1 58 pair Whirlwind splitter with 1 direct out and 2 ISO splits
- 1 15 Pair Wireworks splitter
- 6 15 Pair permanent Mic input mults home run to sound booth from various locations

LIGHTING INFORMATION

The Amaturio Theater is equipped with an extensive permanent "house" lighting plot. It comes focused and colored as per that plot. Any refocusing of equipment during the load-in must be restored during the load-out. To obtain copies of lighting plot contact the production offices. Available in PDF, DWG, or hard copy.

CONTROL

- 1 ETC Gio with two fader panels, two LCD monitors
ETC Sensor3 dimmer racks

POWER DISTRIBUTION

- 2 100 amp 3 phase (1) DSR and (1) DSL
- 1 400 amp 3 phase USR at loading dock w/truck wall ports

FOLLOWSPOTS

- 2 Lycian 1275 Superstar 1.2 (1200w) Followspots located in tech gallery

COMPLETE INVENTORY

The Amaturio Theater has a permanent repertory light plot; therefore most of the inventory is hanging

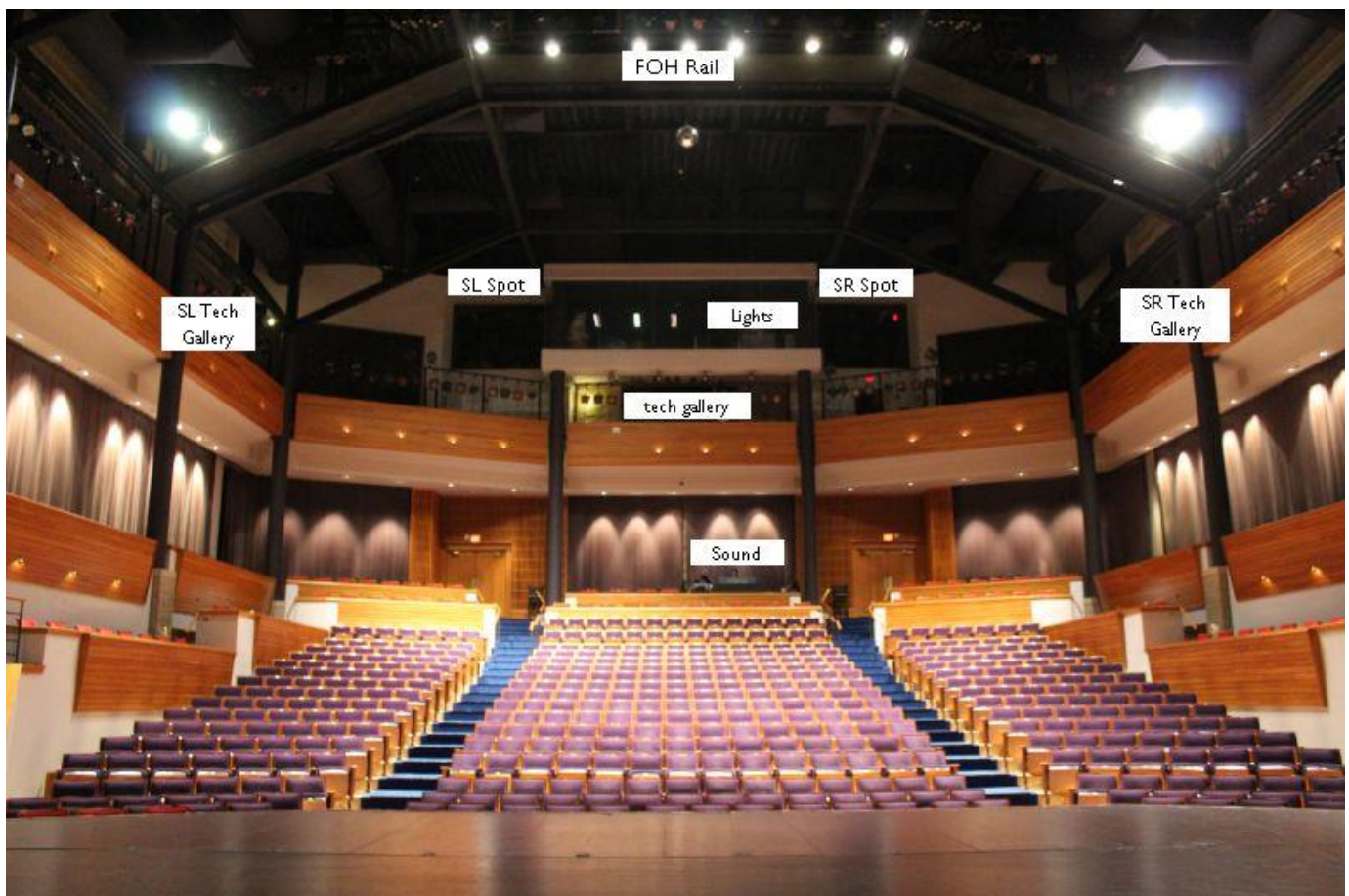
Unit Description	Detail	Total	Hanging	On Rack
Colortran Ellipsoidal 5 deg.	#650-082	6	6	0
Colortran Ellipsoidal 10 deg.	#650-072	32	32	0
Colortran Ellipsoidal 15 deg	#650-052	0	0	0
Colortran Ellipsoidal 20 deg	#650-042	22	22	0
Colortran Ellipsoidal 30 deg	#650-032	36	36	0
Colortran Ellipsoidal 40 deg	#650-022	44	44	0
Colortran Ellipsoidal 50 deg	#650-012	6		6
Colorado LED Wash	Quad 2 Zoom Tour	25	22	3
Elation Moving Light	Satura Spot CMY Pro	5	5	0
Par 56 striplights		12	3	12
Far Cyc		5	5	0
Source 4, 5 deg		6	6	Barrels 5
Source 4, 10 deg		2	2	Barrels 2
Source 4, 19 deg		64	64	Units 38, Barrels 9
Source 4, 26 deg		13	13	0
Source 4, 36 deg		37	37	0
Source 4, 50 deg		0	0	Barrels 13
Source 4, Par		30	24	6
18' booms w/bases		2		
36' Genie personnel lift		1		

ONSTAGE SIDE LIGHT LADDERS

Dead-hung 26'-6" from CL, with a clearance of 10' to the bottom rung. SL/SR Ladders (4 ladders per side, instruments distributed equally to each)

DIMENSIONAL INFORMATION

Curtain line to Technical Gallery	86'
Curtain line to FOH rail	58'
Curtain line to Follow Spot booth	90'
Technical Gallery R to L	70'



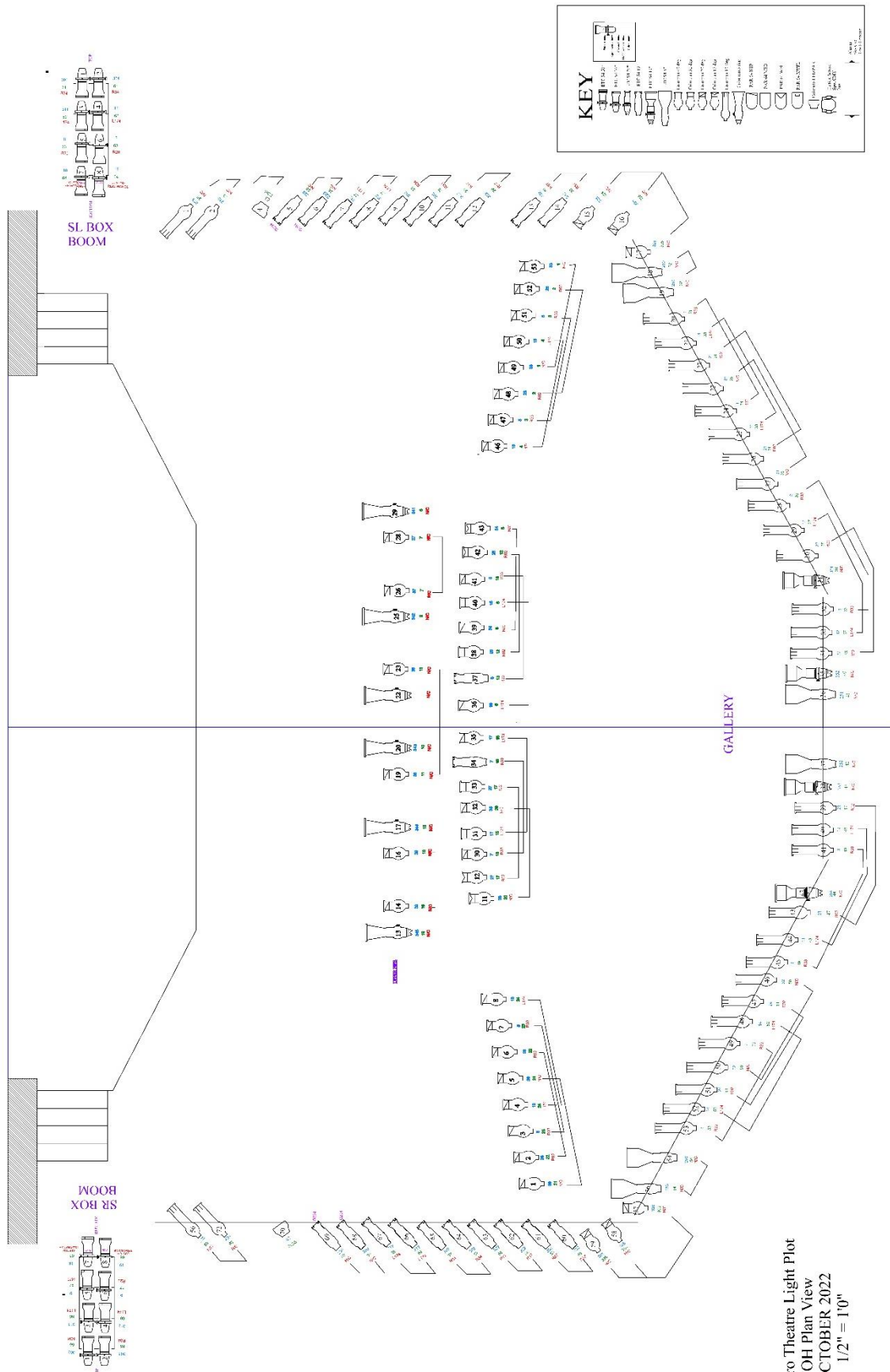
LIGHTING MAGIC SHEET (updated Oct 2022)

<u>PINK FOH (R33)</u> 8 7 6 5 4 3 2 1	<u>BLUE FOH (L174)</u> 18 17 16 15 14 13 12 11	<u>AMBER FOH (R02)</u> 28 27 26 25 24 23 22 21	<u>N/C FOH</u> 36 35 34 33 32 31
<u>BOX BOOM (R34)</u> 303 301	<u>BOX BOOM (L174)</u> 313 311	<u>BOX BOOM (R17)</u> 323 321	<u>BOX BOOM (R57)</u> 333 331
<u>PINK HIGH SIDES (R34)</u> 90 85 89 84 88 83 87 82 86 81	<u>BLUE HIGH SIDES (L174)</u> 100 95 99 94 98 93 97 92 96 91	<u>SOURCE 4 PARS BACKWASH</u> 142 141 140 139 138 137 136 135 134 133 132 131	<u>SHINS (Optional)</u> 218 214 217 213 216 212 215 211
<u>LADDER PINK (L128)</u> 178 174 177 173 176 172 175 171	<u>LADDER LAV (L57)</u> 188 184 187 183 186 182 185 181	<u>LADDER AMBER (L158)</u> 198 194 197 193 196 192 195 191	<u>LADDER GOBO (G264)</u> 208 204 207 203 206 202 205 201
<u>APRON PINK (R34)</u> 302	<u>APRON BLUE (L174)</u> 312	<u>APRON AMBER (R17)</u> 322	<u>APRON LAV (R57)</u> 332
<u>CYC RED (L106)</u> 285 284 283	<u>CYC BLUE (R80)</u> 282 281 280	<u>CYC AMBER (L158)</u> 288 287 286	<u>MIRROR BALL</u> 220 219 336 Motor
<u>MOVERS</u> 73 74 75 71 72	<u>LED WASH</u> 56 57 58 59 60 51 52 53 54 55 46 47 48 49 50 41 42 43 44 45	<u>LED APRON WASH</u> 62 63	<u>BRIDGE SOLO SPECIALS</u> 345 344 343 342 341

FOCUSABLE SPECIALS

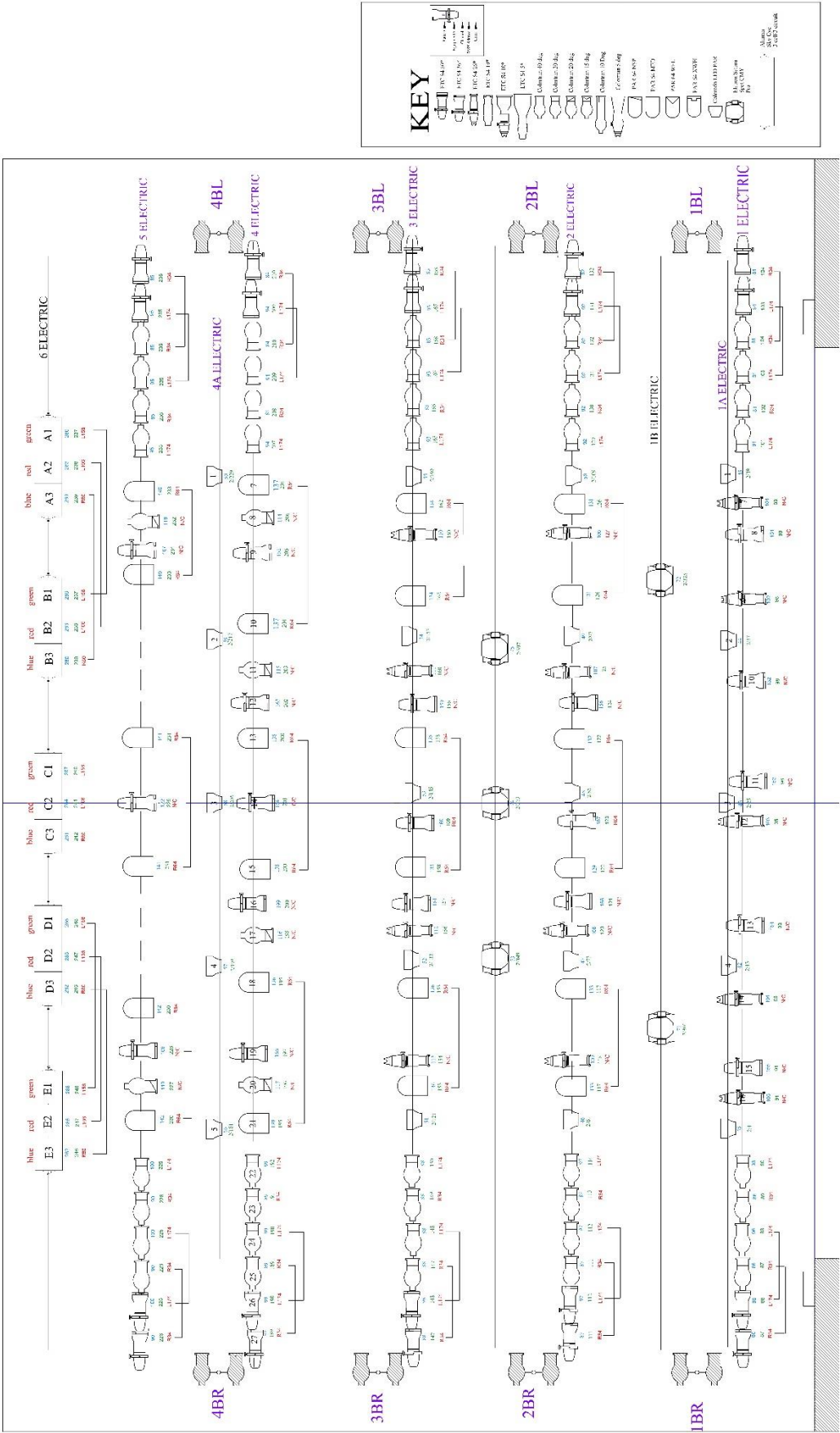
<u>1ST ELEC</u> 105 104 103 102 101 155 154 153 152 151	<u>2ND ELEC</u> 109 108 107 106 158 157 156	<u>3RD ELEC</u> 113 112 111 110 161 160 159	<u>4TH ELEC</u> 117 116 115 114 166 165 164 163 162
<u>5TH ELEC</u> 119 118 169 168 167	<u>GALLERY SPECIALS</u> 353 352 351 350 252 251	<u>BRIDGE DS APRON WASH</u> 39 38 37	<u>LED GROUNDROW</u> 506 505 504 503 502 501

Lighting Plot: FOH



Amaturo Theatre Light Plot
FOH Plan View
OCTOBER 2022
1/2" = 1'0"

Lighting Plot: Stage



CIRCUIT LOCATION

CIRCUIT	Location	Notes
1-24	FOH Cove	
25-38	Technical Gallery SL	
39-46	Technical Gallery REAR	
47-60	Technical Gallery SR	
61-64	Box Boom SL	
65-68	Box Boom SR	
69-74	Orchestra Pit	
75-80	Socapex Breakout SL	
81-86	Socapex Breakout SR	
87-92	Socapex Breakout SL	
93-98	Socapex Breakout SR	
99- 104	Socapex Breakout SL	
105-110	Socapex Breakout SL	4'4" from Plaster Line
111-116	Socapex Breakout SR	4'6" from Plaster Line
117-128	Socapex Breakout SR	8' from Plaster Line
129-134	Socapex Breakout SR	9'10" from Plaster Line
135-140	Socapex Breakout SR	10'10" from Plaster Line
141-146	Socapex Breakout SL	13'1" from Plaster Line
147-152	Socapex Breakout SR	13'4" from Plaster Line
153-164	Socapex Breakout SR	16'4" from Plaster Line
165-170	Socapex Breakout SR	18'10" from Plaster Line
171-176	Socapex Breakout SR	19'10" from Plaster Line
177-182	Socapex Breakout SL	22'2" from Plaster Line
183-188	Socapex Breakout SR	22'6" from Plaster Line
189-200	Socapex Breakout SR	25'6" from Plaster Line
201-206	Socapex Breakout SR	28' from Plaster Line
207-212	Socapex Breakout SR	29' from Plaster Line
213-224	Socapex Breakout SL	30' from Plaster Line
225-236	Socapex Breakout SR	30' from Plaster Line
237-242	Socapex Breakout SL	31'6" from Plaster Line
243-248	Socapex Breakout SR	31'6" from Plaster Line
249-254	Fly Gallery SL	
255-260	Fly Gallery SR	
261-264	DSL Wall	
265-268	DSR Wall	
269-272	USL Wall	
273-288	USR Wall	
NON-DIMS		
A,B	FOH Cove and Technical Galleries	
C,D	Fly Galleries SL and SR	
E,F,G,H	DSL, USL, DSR, USR	

ORCHESTRA EQUIPMENT AND CONCERT SHELL

HOUSE EQUIPMENT:

ORCHESTRA EQUIPMENT

- 10 Incandescent Music Stand Lights
- 10 LED Music Stand Lights
- 10 Stools
- 1 Conductor's Podium and Stand

STEP UNITS:

- 2 8" single step units
- 2 16" step units
- 2 24" step units

ORCHESTRA CONCERT SHELL:

The Amaturio Theatre is equipped with 13 Wenger acoustical shell walls that can be arranged in a variety of configurations. Each shell piece is 6' wide in approximately 12' high with a 2' outrigger on the rear. Each shell piece is easily moveable with locking casters.



SHARED EQUIPMENT:

NOTE: The following Orchestra Equipment package is shared with other venues at the Broward Center and may not be available for your event unless prior arrangements have been made with Production Staff in advance of your event.

ORCHESTRA EQUIPMENT

- 96 Wenger Orchestra Chairs
- 6 Cello Chairs
- 86 Music Stands w/lights

RISERS: Black skirting is available for risers

- 10 4'x 8'x 8"h
- 10 4'x 8'x 16"h
- 20 4'x 8'x 24"h

PIANOS (Note: Pianos tuned only by House Tuner Only - tuning not included)

- 2 9' Steinway Concert Grand Model D
- 1 7' Steinway Grand Model B
- 4 Yamaha Uprights

DRESSING ROOM / SUPPORT SPACES

DRESSING ROOMS:

All dressing rooms are located directly behind the stage, and are accessible from either side. The numbering starts closest to SL, and proceeds across to SR. All rooms are equipped with showers, toilets, mirrors, chairs and costume racks. The smaller dressing rooms have a counter running the length of one long wall, while the larger rooms have counters running along both long walls. Companies working under an AEA contract should use the smaller number for dressing room assignments. There is an audio feed from the stage throughout the area.

Dressing Room #	Number of People	Dimensions
Room #115	6-8 people	8' 6"W x 18' 4"L
Room #116	12-16 people	14' W x 18' 4"L
Room #117	12-16 people	14' W x 18' 4"L
Room #118	6-8 people	8' 6"W x 18' 4"L



GREEN ROOM

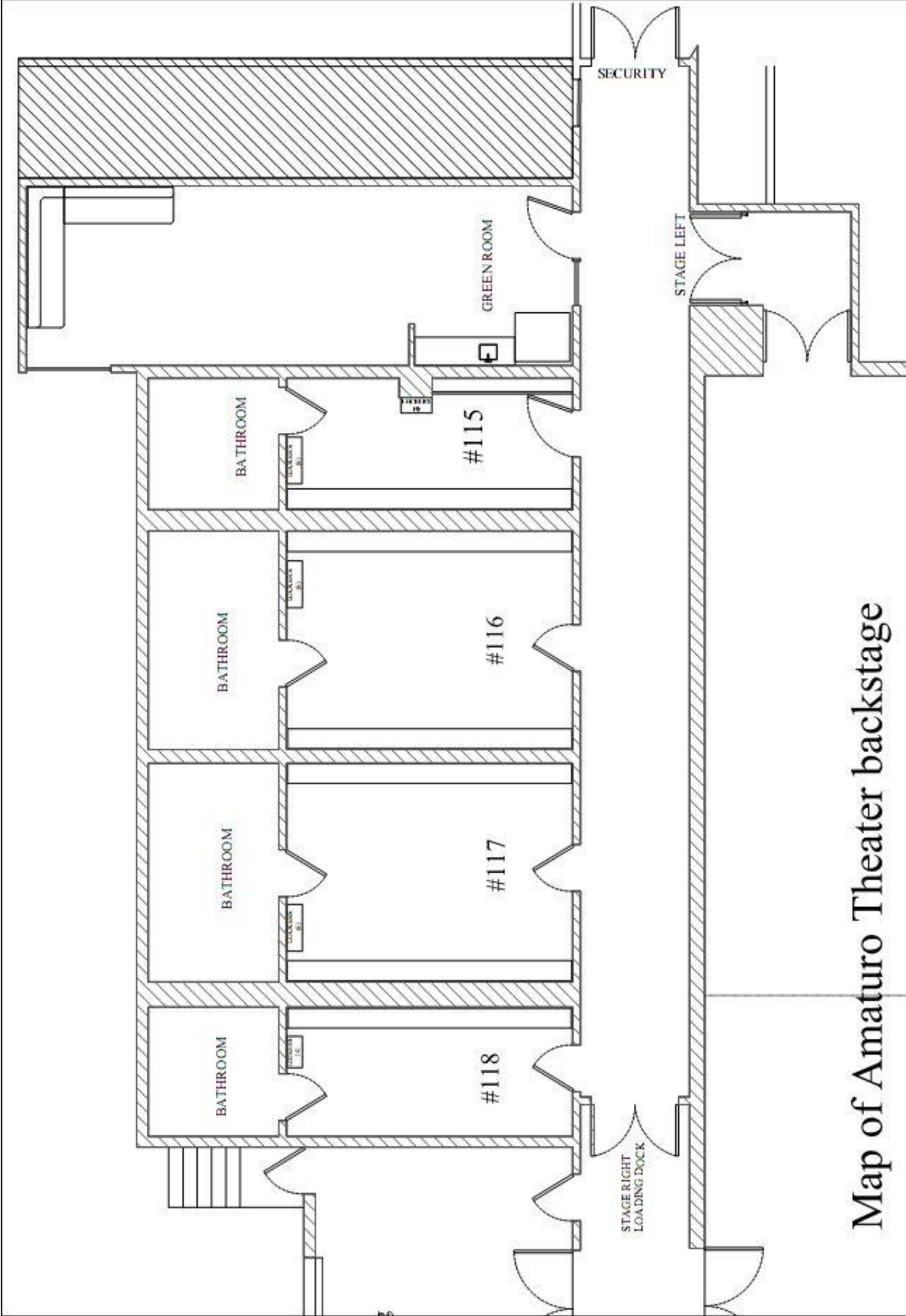
The Amaturto Green Room is 35' x 11' 6", and has a commercial grade coffee maker, standard refrigerator/freezer, and a sink. It can be used as a Catering Room, a Wardrobe Room, a Production Office or a Rehearsal/Warm-up room. It has a section of mirrors and barres.



There are additional mirrors and barres outside in between dressing rooms #117 and #118, and in the stage entrance to Up Stage Left.



Backstage Map



Map of Amatur Theater backstage