

TECHNICAL SPECIFICATIONS

AMATURO THEATER



BROWARD CENTER
FOR THE PERFORMING ARTS

Fort Lauderdale, Florida
November 2019

TABLE OF CONTENTS

| | |
|---|----|
| GENERAL CONTACT INFORMATION..... | 2 |
| BACKSTAGE SECURITY CREDENTIALS | 3 |
| MAP & DIRECTIONS..... | 4 |
| TRUCK, BUS & VEHICLE PARKING | 4 |
| SITE PLAN | 5 |
| LOADING DOCK INFO | 7 |
| SEATING CAPACITY | 8 |
| SEATING CHART | 9 |
| STAGE SPECIFICATIONS | 10 |
| ORCHESTRA PIT / STAGE THRUST INFORMATION..... | 10 |
| STAGE DIMENSIONS & GROUND PLAN..... | 11 |
| RIGGING SPECIFICATIONS / OBSTACLES | 13 |
| SOFTGOODS INVENTORY | 13 |
| HANGING PLOT / LINE SCHEDULE | 14 |
| SOUND AND COMMUNICATIONS..... | 16 |
| LIGHTING INFORMATION..... | 21 |
| POWER DISTRIBUTION..... | 21 |
| GENIE LIFT | 21 |
| DIMENSIONAL INFORMATION..... | 22 |
| ORCHESTRA EQUIPMENT / CONCERT SHELL INFORMATION | 27 |
| DRESSING ROOMS/SUPPORT SPACES | 28 |
| BACKSTAGE MAP | 31 |

Amaturo Theatre

at the

Broward Center for the Performing Arts

201 Southwest 5th Avenue

Fort Lauderdale, FL 33312

Main Office (954) 522-5334 (M-F 8:30A-5:30P)

Main Fax (954) 468-2549

Box Office (954) 468-3338

PRODUCTION

| | | | |
|--------------------------|----------------|----------------|--|
| Director of Production | Tim Lessig | (954) 468-2557 | tlessig@browardcenter.org |
| Production Manager | Chris Jahn | (954) 765-5802 | cjahn@browardcenter.org |
| Production Manager | Lucas Bonewits | (954) 468-3317 | lbnewits@browardcenter.org |
| Production Supervisor | Angel Wrona | (954) 765-5819 | awrona@browardcenter.org |
| Production Manager | Craig Lozowick | (954) 414-6906 | clozowick@browardcenter.org |
| Production Fax | | (954) 468-3315 | |
| Stage Door Security Desk | | (954) 468-3323 | |

EVENT SERVICES

| | | | |
|------------------------------|-----------------|----------------|--|
| Vice President of Operations | Shelly Bradshaw | (954) 468-2696 | sbradshaw@browardcenter.org |
| Director of Event Services | Pablo Urquilla | (954) 468-3313 | purquilla@browardcenter.org |
| Event Services Manager | Kerry McCloskey | (954) 414-6905 | kmccloskey@browardcenter.org |
| Event Services | Brandy DeMil | (954) 660-6350 | bdemil@browardcenter.org |

STAGE LABOR - I.A.T.S.E. Local 500

The Broward Center for the Performing Arts employs members of I.A.T.S.E. Local 500 for all productions in the Au-Rene Theatre. For further information, please contact Production Staff for labors rates and work rules.

| | | | |
|---------------------------|------------------|----------------|--|
| Head Carpenter | Adam Colburn | (954) 892-8596 | acolburn027@outlook.com |
| Head Sound (steward) | Parrish Thompson | (954) 707-7500 | pthomp02@gmail.com |
| Head Electrician | Margaret Carrol | (702) 419-4842 | margretmae@gmail.com |
| Assistant Electrician | Janine Elmore | (954) 802-2694 | janinescene@gmail.com |
| Business Agent Local #500 | Terry McKenzie | (954) 881-2353 | termack500@gmail.com |

ADDITIONAL CONTACTS INFORMATION

| | | | |
|-------------------------------|-------------------|----------------|--|
| Vice President of Programming | Matt McNeil | (954) 468-3312 | mmcneil@browardcenter.org |
| Director Of Programming | Jill Kratish | (954) 468-3295 | jkratish@browardcenter.org |
| Director of Guest Services | David Dillon | (954) 468-3305 | ddillon@browardcenter.org |
| Director of Food & Beverages | Vinnie Venezia | (954) 468-3337 | vvenezia@browardcenter.org |
| Admin. Mgr F&B – Merch | William Stoneberg | (954) 468-3336 | wstoneberg@browardcenter.org |

BACKSTAGE CREDENTIALING POLICY

To increase the safety of our backstage environment, the Broward Center for the Performing Arts (BCPA) will be requiring all BCPA staff, stagehands, vendors, performers and their respective representatives to have and display a credential at all times while in any of our backstage areas.

Credential Criteria

Credentials are to be produced, maintained, distributed and collected by the entity performing in a BCPA venue. Although it would be optimal to have every individual's name and photo on a credential, this may not be feasible in all situations. At a minimum, the credential must have the following characteristics:

- Credit card size or larger and double sided
- Include the name and logo of their organization
- Plastic or laminated
- Affixed to a belt-style clip or lanyard
- Be difficult to easily replicate



Displaying and Wearing Credential

- Present credential at the Security Desk
- Conspicuously wear credential while backstage
- Everyone must have their own credential
- Provide a sample copy of credentials to BCPA Venue, Production and Security in advance
- **Credentials are NEVER expected to be worn on stage**

Exceptions

- Headliner artists who remain on tour buses or who arrive immediately prior to showtime are not expected to display/wear a credential
- Children performing in recitals or BCPA Education productions are not expected to display/wear a credential, but must be accompanied and escorted by someone wearing credentials

MAP & DIRECTIONS

The Broward Center is conveniently located in the Riverwalk Arts & Entertainment District in downtown Fort Lauderdale, equidistant between Dade and Palm Beach Counties and can be reached by several routes.

From Interstate-95:

Exit at Broward Boulevard, Go east.

From Florida Turnpike (southbound):

Exit at Sunrise Boulevard, Go East to South-bound I-95, exit Broward Boulevard, Go east.

From Florida Turnpike (northbound):

Exit at I-595, Go East to North-bound I-95, exit Broward Boulevard, Go east.

To Backstage Parking Lot:

From Broward Boulevard turn right (South) onto SW 7th Avenue (Avenue of the Arts). Turn left at West Las Olas Blvd (the second light). Take an immediate left into the backstage lot security gate. Push the buzzer to contact guard. Identify yourself and guard will let you enter.

To Parking Garage and Valet:

Broward Boulevard. Turn South onto SW 5th Avenue. The Arts and Science Parking Garage is on the immediate right, or, proceed straight ahead, cross 2nd Street (Himmarshee St.) and continue to the top of the hill for valet service.

From Fort Lauderdale Airport to Backstage Lot:

Take the "US1 / Federal Highway Northbound" exit out of the Airport. Travel North on US1 to SE 17th Street Causeway. Turn left (West) and go to SW 4th Avenue and turn right (North). SW 4th Avenue will become SW 7th Avenue at the bridge. Go over the bridge, turn right at West Las Olas Blvd. Take an immediate left into the backstage lot security gate. Push the buzzer to contact guard. Identify yourself and guard will let you enter.

North Gate - Trucks going to Loading Dock:

From Broward Boulevard turn South onto SW 5th Avenue. Turn right at Second Street (Himmarshee Street). The gate entrance to back-stage lot is on your left. Push the buzzer to contact guard. Identify yourself and guard will let you enter.

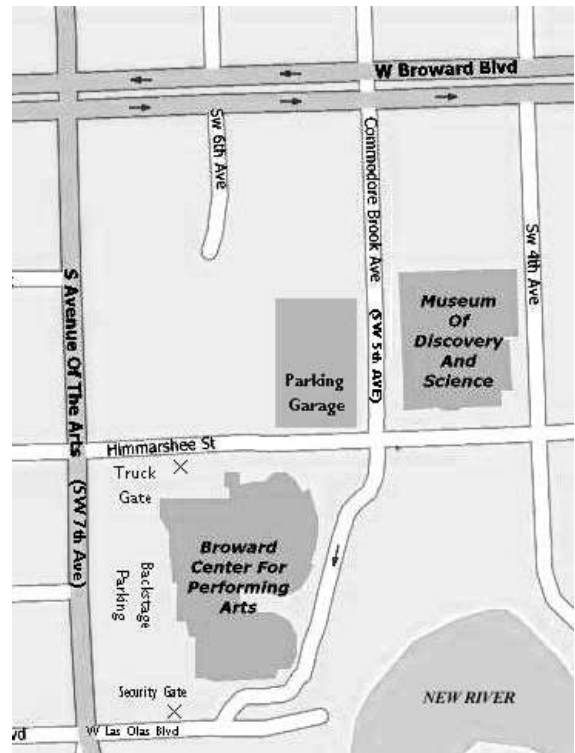
GPS Address (do not use for anything else!)

To the backstage Security gate:
641 West Las Olas Boulevard
Fort Lauderdale;

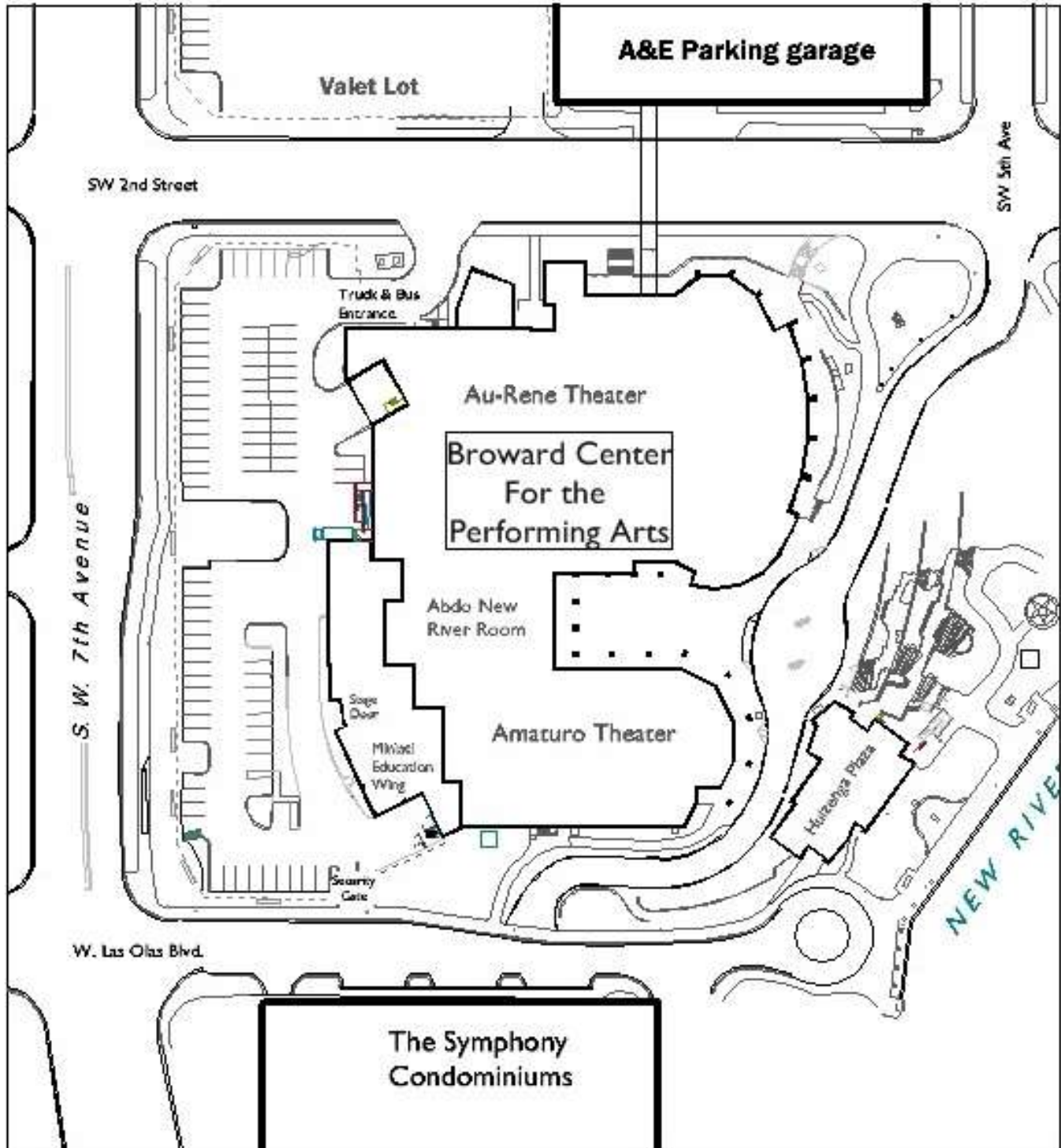
To the North Gate (truck & bus parking)
582 SW 2nd Street
Fort Lauderdale FL

TRUCK, BUS & VEHICLE PARKING

Truck & Bus Parking on site is limited. There is parking available directly backstage in the lot for 10 cars and additional parking available for 40 cars in the Arts and Science parking garage located across the street from the theatre. All parking arrangements must be discussed with Production Staff prior to the event for necessary passes and badges.



Broward Center Site Plan

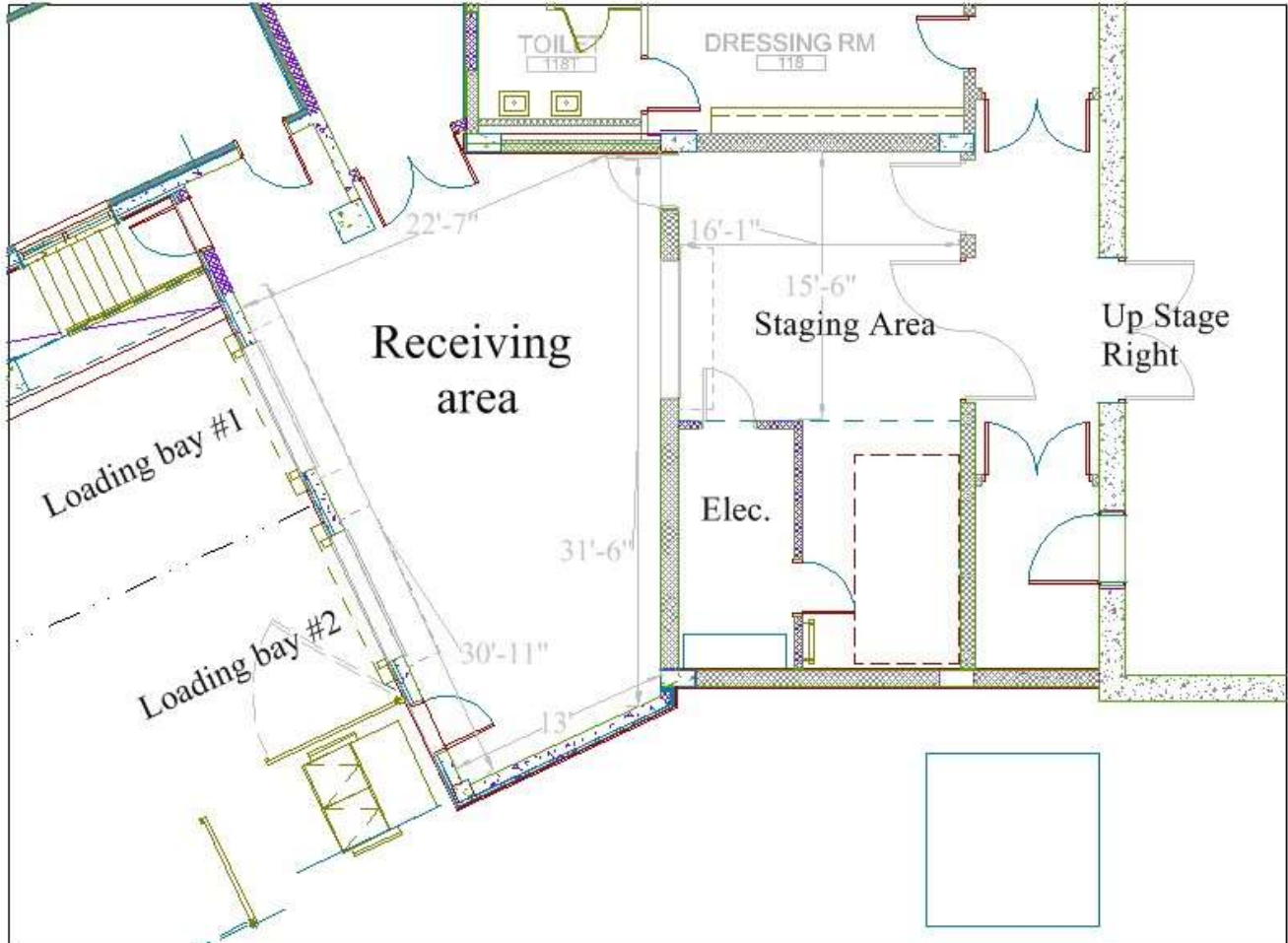


BCPA Parking Lot



LOADING DOCK

The Amaturio Loading Dock is located at the southwest corner of the building at S.W. 7th Ave and Las Olas Boulevard, but trucks must use the entrance on the north end of the parking lot on Himmarshee Street. There are two loading bays. The dock is 3' high, and the receiving doors are 8' wide by 8' high. The doors from the receiving area onto the stage are 7'-6" w x 25' h'.



The staging area is used to store the Amaturio's orchestra shell, as well as other equipment, depending on activities within the building. This will not impede loading equipment into the theater, but if you need that space during your event, please discuss with the Production Department in advance of your event.

Prior notice is necessary if the dock will be accommodating a tractor trailer longer than 40'; part of the lot must be reserved so the truck can maneuver.

Shore Power is available (inside the receiving area long shared wall with the electrical closet), but you must supply your own tails.



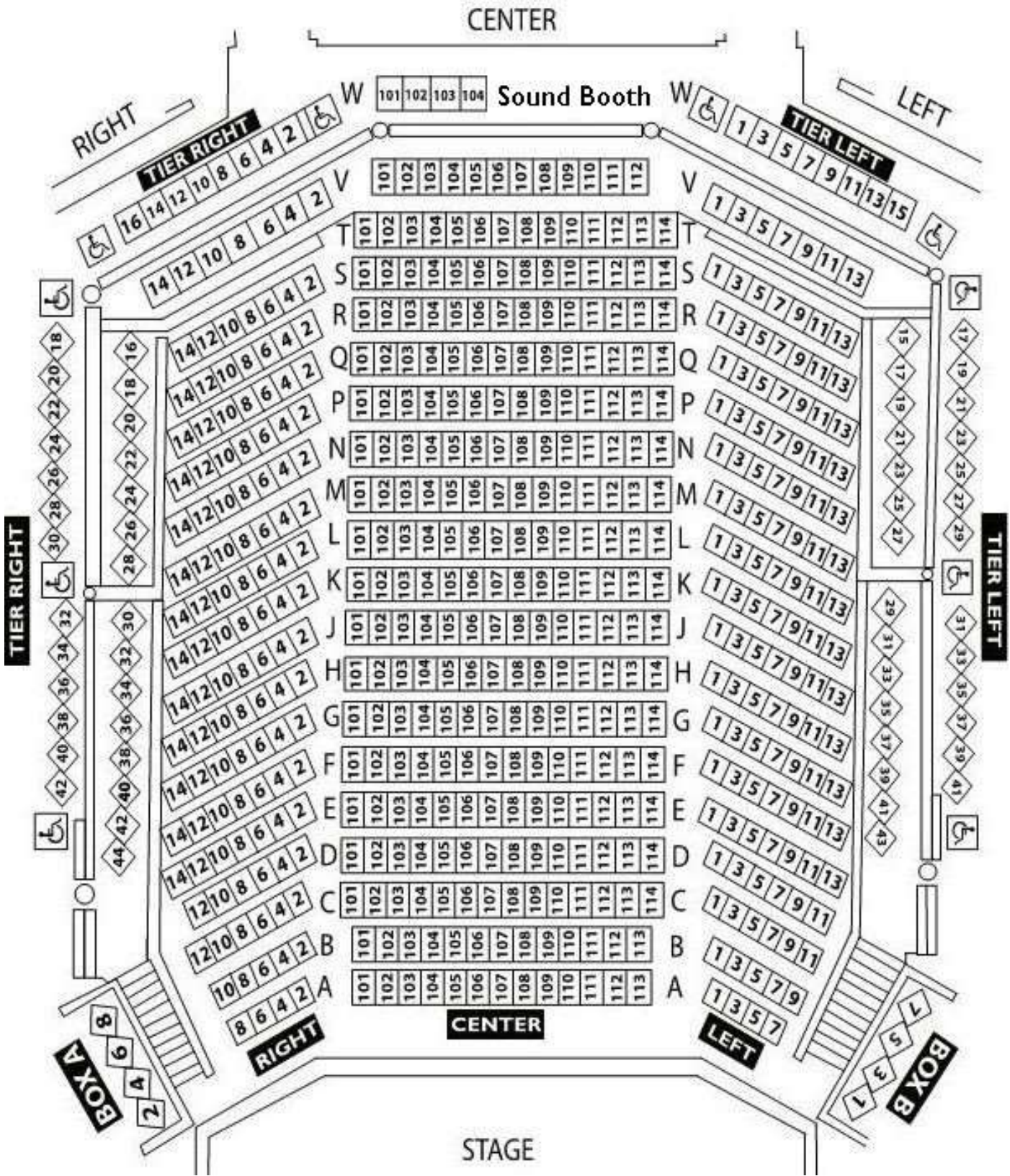
SEATING INFORMATION AND CAPACITY

(MAXIMUM SEATING CAPACITY IS 582 SEATS (See seating map on follow page)

| | | |
|-------------------|------------|-----------------|
| Orchestra Section | Rows A – T | 488 seats |
| Side Tiers | Rows V – W | 90 Seats |
| Box Seats | | 8 Seats |
| | | Total 582 seats |



SEATING CHART



STAGE SPECIFICATIONS

STAGE FLOOR is a semi-sprung floor with double layer tongue and groove plywood on aluminum sleepers over rubber blocks, and finished with black masonite/bennelex. The rubber blocks are surrounded by a steel channel which limits over-decompression. Any damage to floor incurred by a production must be restored.

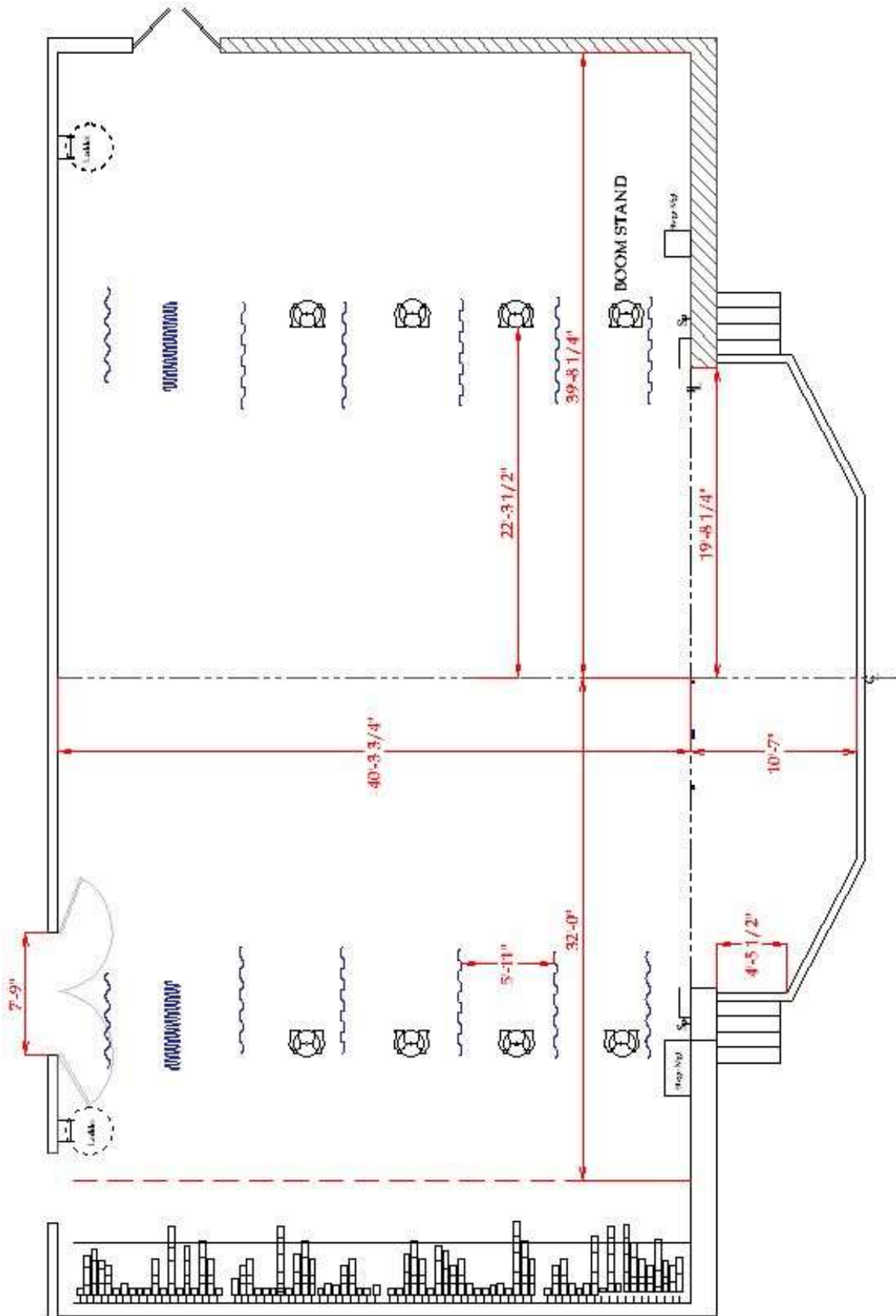
| | |
|--|---------|
| HEIGHT OF GRID | 50' |
| HEIGHT OF PROSCENIUM | 25' |
| WIDTH OF PROSCENIUM | 39' 10" |
| HEIGHT OF GALLERIES | |
| Upper Loading Gallery | 50' |
| Middle Loading Gallery | 26' 6" |
| Pin Rail SL | 25' 5" |
| DEPTH OF STAGE (from Plaster Line) | 40' |
| WIDTH OF STAGE | 75'-6" |
| Width of stage (center to SR) | 32' |
| Width of stage (center to SL) | 39' -6" |
| CENTER STAGE TO PINRAIL SR | 36' |
| APRON (from Plaster Line) | 1' -7" |
| (from House Curtain) | 2' -7" |
| FULL THRUST (from Plaster line) | 10' -7" |
| (from House Curtain) | 11' -7" |
| HEIGHT OF STAGE (seating level to stage level) | 3' -4" |

ORCHESTRA PIT

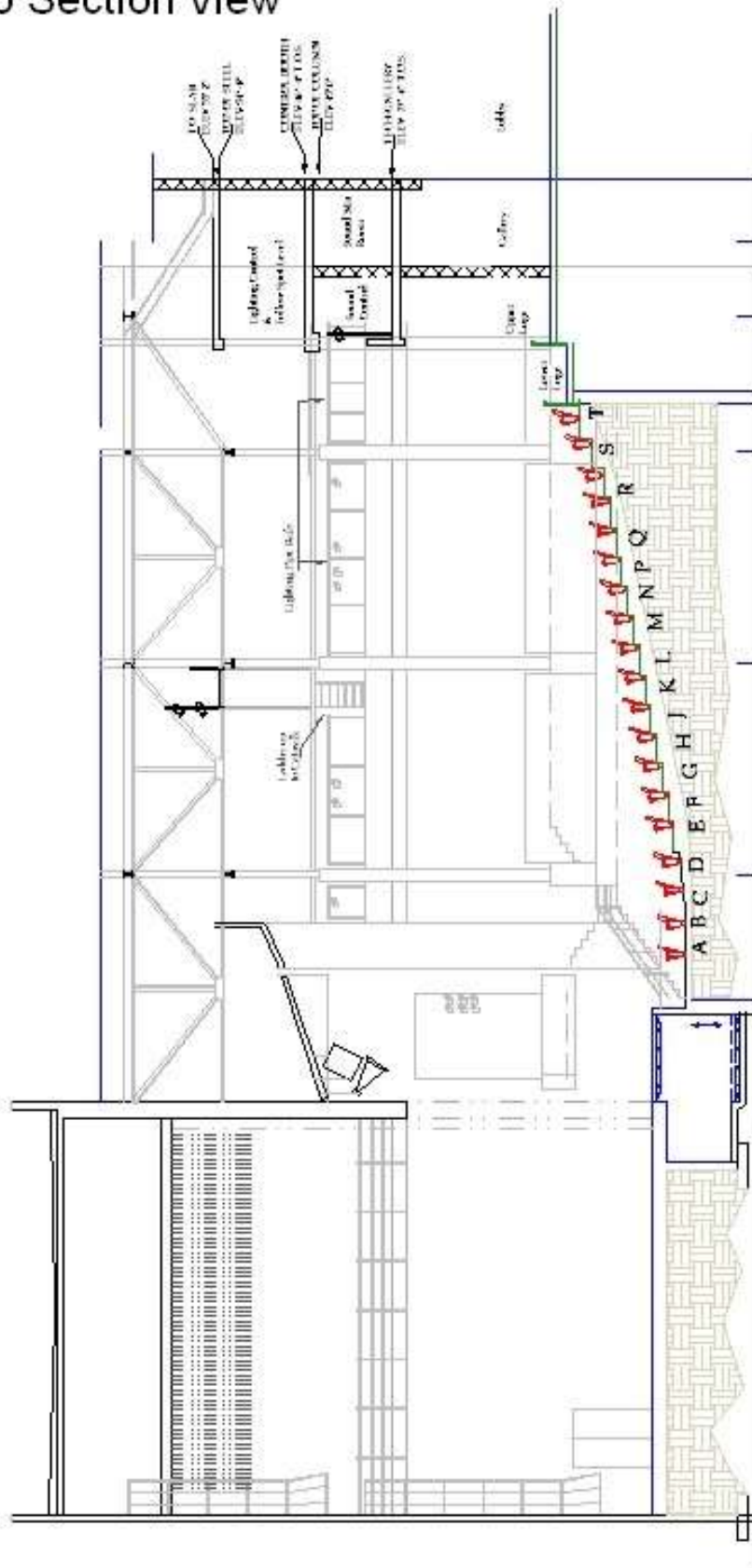
The Pit has a cover that extends the stage apron to 10' -7". This cover consists of 15 pieces that are manually moved down to create the floor of the Pit for use. The Pit under-hang is 5' -6"

| | |
|---|-------------------------|
| Opening (Stage Edge to DS Pit Wall) | 9' |
| Overall Dimensions (including pit under-hang) | 40' x 14' 6" (D shaped) |
| Approximate Capacity of Musicians | 35 |
| HEIGHT OF PIT (pit level to stage level) | 8' -3" |

STAGE DIMENSIONS & GROUND PLAN



Amaturo Section View



RIGGING SPECIFICATIONS

Single purchase counterweight, hand-operated line sets operated from the deck stage right.

| | |
|------------------------|----------------------------|
| NUMBER OF LINE SETS | 73 line sets, 6" on center |
| GRID HEIGHT | 50' |
| TRAVEL DISTANCE | 48' |
| MAX WEIGHT PER ARBOR | 1400 lbs |
| TOTAL WEIGHT AVAILABLE | 102,200 lbs |
| LENGTH OF BATTENS | 48' |
| TAB PIPES (5 pairs) | 26' OC SL & SR |

HOUSE CURTAIN is a manual counterweight guillotine center split velour curtain located 5" upstage from smoke pocket. Curtain is operated from stage level down stage right and is not part of the operating rail. House Curtain is permanent and cannot be moved or removed.

SOFT GOODS INVENTORY

- 6 black velour borders (10' h x 48' w)
- 12 black velour legs (27' h x 10' w)
- 8 Black Velour tabs (27' h x 4' w)
- 1 black velour split traveler curtain (27' h x 45' w)
- 2 black velour curtains (27' h x 45' w)
- 1 black sharks tooth scrim (27' h x 48' w)
- 1 white cyclorama (27' h x 48' w)

Hanging Plot

| SHOW: | | | | |
|-------------------|-----------------|---------------------------------|------------------|---------------|
| Line Set # | Position | House Hang | Show Hang | Weight |
| | | | | |
| | 0" | Smoke Pocket | | |
| | 5" | House curtain | | |
| 1 | 1'8" | #1 black border & choir mics | | |
| 2 | 2'2" | #1 Black Legs | | |
| 3 | 2'8" | Christie Projector Pipe | | |
| 4 | 3'2" | Electric #1 | | |
| 5 | 3'8" | | | |
| 6 | 4'2" | | | |
| 7 | 4'8" | | | |
| 8 | 5'2" | | | |
| 9 | 5'8" | | | |
| 10 | 6'2" | #1B Elec (movers) | | |
| 11 | 6'8" | | | |
| 12 | 7'2" | | | |
| 13 | 7'8" | #2 black border | | |
| 14 | 8'2" | | | |
| 15 | 8'8" | #2 black legs 19'/extra masking | | |
| 16 | 9'2" | 9'x6' Screen | | |
| 17 | 10'2" | #2 Electric w/ LED's | | |
| 18 | 10'8" | | | |
| 19 | 11'2" | | | |
| 20 | 11'8" | | | |
| 21 | 12'2" | | | |
| 22 | 12'8" | | | |
| 23 | 13'2" | | | |
| 24 | 13'8" | #2C Electric Moving Lights | | |
| 25 | 14'2" | #3 Black Border | | |
| 26 | 14'8" | #3 black legs 19' | | |
| 27 | 15'2" | | | |
| 28 | 15'8" | Black Scrim | | |
| 29 | 16'2" | Blackout Drop | | |
| 30 | 16'8" | | | |
| 31 | 17'2" | #3 Electric w/ LED's | | |
| 32 | 17'8" | | | |
| 33 | 18'2" | | | |
| 34 | 18'8" | | | |
| 35 | 19'2" | | | |
| 36 | 20'1" | | | |
| 37 | 20'8" | Screen storage | | |

| | | | | |
|----|--------|-------------------------------|--|--|
| 38 | 21'2" | | | |
| 39 | 21'8" | #4 black border | | |
| 40 | 22'2" | #4 black legs 19' | | |
| 41 | 22'8" | | | |
| 42 | 23'2" | | | |
| 43 | 23'8" | | | |
| 44 | 24'2" | #4 Electric | | |
| 45 | 24'8" | | | |
| 46 | 25'2" | | | |
| 47 | 25'8" | #4A Electric LED PARs | | |
| 48 | 26'2" | | | |
| 49 | 26'8" | | | |
| 50 | 27'2" | | | |
| 51 | 27'8" | | | |
| 52 | 28'2" | #5 black border | | |
| 53 | 28'7" | #5 black legs 19' | | |
| 54 | 29'1" | | | |
| 55 | 30'2" | | | |
| 56 | 30'8" | Electric #5 | | |
| 57 | 31'2" | | | |
| 58 | 31'8" | | | |
| 59 | 32'2" | | | |
| 60 | 32'8" | | | |
| 61 | 33'2" | Traveler B.O. Drop | | |
| 62 | 33'8" | | | |
| 63 | 34'2" | #6 Electric (5 Far Cyc 3 Cir) | | |
| 64 | 34'8" | | | |
| 65 | 35'2" | | | |
| 66 | 35'8" | | | |
| 67 | 36'2" | | | |
| 68 | 36'8" | | | |
| 69 | 37'2" | #6 black legs | | |
| 70 | 37'7" | White filled scrim-CYC | | |
| 71 | 38'1" | Old Blackout Drop | | |
| 72 | 38'6" | | | |
| 73 | 38'11" | Rug Storage | | |

SOUND AND COMMUNICATIONS

SPEAKER CONFIGURATION

The Amaturio Theater has a stereo line array system, flown flanking the proscenium opening to cover the entire auditorium, with a flown sub array in the center.

Main Arrays

The primary speaker system consists of two (2) Meyers line arrays consisting of eight MINA compact curvilinear array speakers.

Sub Array

The sub-woofer array consists of three Meyers 500-HP compact high-power subwoofers.

Front Fills

The front fills consist of 98 JBL 8110h speakers built into the lip of the stage.



Effects Speakers

8- EAW LC12 (mounted on side and rear walls of the theater)(wired for Surround Sound)

SOUND MIX POSITIONS

There are two mixing position available in the Amaturro Theatre; the primary position is Row W, at the back of the house. The Alternate position is located along the center of the rear wall, in the Tech Gallery. It is fully open to the room. (See photo on page 20)

FRONT OF HOUSE CONSOLE

Midas Pro 3 IP Digital Console Control Centre with 36 Input Channels, 27 Mix Buses and 96 kHz Sample Rate

SOURCE GEAR

- 2 – Sony Mini Disc machines with Auto Pause
- 1 – TASCAM CD-RW901MK2 CD player/recorder

MONITORS & MICROPHONES

House Monitor Package

The Amaturio Theater is equipped to send five monitor mixes from the front of house console that we can send to 6 JBL MRX500 wedges. If more mixes are required, a separate monitor desk and operator will need to be brought in.

House Wireless Microphones

The Amaturio Theater is equipped with an Axient system. We have 8 receivers, 8 handheld wireless transmitters (with SM58 heads, and 4 KSM9 heads are also available), and 8 wireless bodypack transmitters.

Additional equipment

NOTE: The following Monitor Equipment and Microphone package is shared with other venues at the Broward Center and may not be available for your event *unless prior arrangements have been made* with Production Staff in advance of your event.

MONITOR CONSOLE:

Yamaha PM5D-RH

MONITOR SPEAKERS:

- 2 Shure in-ear monitors PSM700 w/ E3 SHU P7TRE3
- 10 powered wedge speakers Meyers UM100-P
- 2 Stage monitors Meyers USM-100P
- 4 Side Fill speakers Meyers UPQ-IP
- 4 powered subwoofer – dual 10” Meyers UMS-IP
- 2 EV I502 ER
- 6 JBL MRX 512M
- 5 EAW VM12
- 4 Galaxy hot spots
- 7 Anchor AN 1001 X
- 1 Anchor AN 1000 self-powered
- 1 Galaxy Audio Hot Spot PAIII self-powered hot spot

Portable Microphone Splitter:

- 1 58 pair Whirlwind splitter with 1 direct out and 2 ISO splits
- 1 15 Pair Wireworks splitter
- 6 15 Pair permanent Mic input mults home run to sound booth from various locations

MICROPHONES

WIRED MICROPHONES:

| <u>Manufacturer/Model</u> | <u>Quantity</u> | <u>Manufacturer/Model</u> | <u>Quantity</u> |
|---------------------------|-----------------|---------------------------|-----------------|
| Shure KSM 9 | 8 | Sennheiser ME 66 | 4 |
| Shure KSM 141 | 6 | Sennheiser MD421U | 3 |
| Shure KSM 32 | 6 | | |
| Shure Beta SM57 | 9 | Earthworks PM 40 | 2 |
| Shure Beta SM58 | 7 | Electro Voice RE320 | 2 |
| Shure SM81 | 5 | Electro Voice RV18 | 3 |
| Shure SM87A | 6 | Electro Voice RE20 | 4 |
| Shure Beta 98A | 8 | Electro Voice DS35 | 4 |
| Shure Beta 91 | 2 | Whirlwind PB 12 | 2 |
| Shure Beta 52 | 2 | Beyer M160 | 4 |
| Shure Beta 181S | 4 | | |
| Shure Beta 56 | 6 | Audio Tech AT857QMa | 3 |
| Shure Beta 57A | 8 | Audio Tech AT857QMLa | 1 |
| Shure WA310 | 12 | Crown PCC 160 | 8 |
| AKG C414 XLII/ST | 2 | Crown PZM LP6 | 3 |
| AKG C214 | 2 | Crown PZM 6RB | 4 |
| AKG C535 | 2 | Crown GLM 200 | 2 |
| Countryman ISOMAX 2 | 12 | B & K 401 I | 2 |
| Countryman ISOMAX 2H | 12 | | |
| Countryman M4HP5RF24EB | 6 | | |

WIRELESS MICROPHONES:

There are six (16) channels of Shure ULXD Diversity Receivers, divided into two racks

- 8 ULXD receivers per rack
- 4 handheld transmitters with SM58 heads
- 8 Bodypack transmitters

DIRECT INPUT BOXES:

| | | |
|----|------------------------------|------------|
| 10 | Countryman FET 85 | Passive DI |
| 6 | Radial Engineering JDI MKIII | Passive DI |
| 4 | Radial Engineering JPC | PC DI |
| 2 | Whirlwind PCDI | PC DI |

BACKSTAGE COMMUNICATIONS

The Amaturro Theatre is equipped with a Clear Com 2 channel intercom system; stations are located in the control booths, spot booths, and in the wings (including the fly rail).

- 1 MS-702 2-Channel Headset/Speaker Main Station
- 7 RS-701 wired belt pack (single channel)
- 1 RS702 wired belt pack (double channel)
- 1 WBS670 Wireless Intercom Base Station
- 6 WTR-670 Wireless belt pack (single channel)

LIGHTING INFORMATION

The Amaturio Theater is equipped with an extensive permanent "house" lighting plot. It comes focused and colored as per that plot. Any refocusing of equipment during the load-in must be restored during the load-out. To obtain copies of lighting plot contact the production offices. Available in PDF, DWG, or hard copy.

CONTROL

- 1 ETC Gio with two fader panels, two LCD monitors
- ETC Sensor3 dimmer racks

POWER DISTRIBUTION

- 2 100 amp 3 phase (1) DSR and (1) DSL
- 1 400 amp 3 phase USR at loading dock w/truck wall ports

FOLLOWSPOTS

- 2 Lycian 1275 Superstar 1.2 (1200w) Followspots located in tech gallery

COMPLETE INVENTORY

The Amaturio Theater has a permanent repertory light plot; therefore most of the inventory is hanging

| Unit Description | Detail | Total | Hanging | On Rack |
|-------------------------------|---------------------|-------|---------|---------|
| Colortran Ellipsoidal 5 deg. | #650-082 | 14 | 12 | 2 |
| Colortran Ellipsoidal 10 deg. | #650-072 | 49 | 44 | 5 |
| Colortran Ellipsoidal 15 deg | #650-052 | 4 | 4 | 0 |
| Colortran Ellipsoidal 20 deg | #650-042 | 95 | 90 | 5 |
| Colortran Ellipsoidal 30 deg | #650-032 | 111 | 74 | 37 |
| Colortran Ellipsoidal 40 deg | #650-022 | 82 | 80 | 2 |
| Colortran Ellipsoidal 50 deg | #650-012 | 6 | | 6 |
| PAR cans (P64) | Par 64 | 31 | 12 | 19 |
| Colorado LED Wash | Quad 2 Zoom Tour | 25 | 25 | 0 |
| Elation Moving Light | Satura Spot CMY Pro | 5 | 5 | 0 |
| Par 56 striplights | | 17 | 3 | 14 |
| Far Cyc | | 5 | 5 | 0 |
| | | | | |
| | | | | |
| | | | | |
| | | | | |
| 18' booms w/bases | | 2 | | |
| 36' Genie personnel lift | | 1 | | |

ONSTAGE SIDE LIGHT LADDERS

Dead-hung 26'-6" from CL, with a clearance of 10' to the bottom rung. SL/SR Ladders (4 ladders per side, instruments distributed equally to each)

DIMENSIONAL INFORMATION

| | |
|-----------------------------------|-----|
| Curtain line to Technical Gallery | 86' |
| Curtain line to FOH rail | 58' |
| Curtain line to Follow Spot booth | 90 |
| Technical Gallery R to L | 70' |



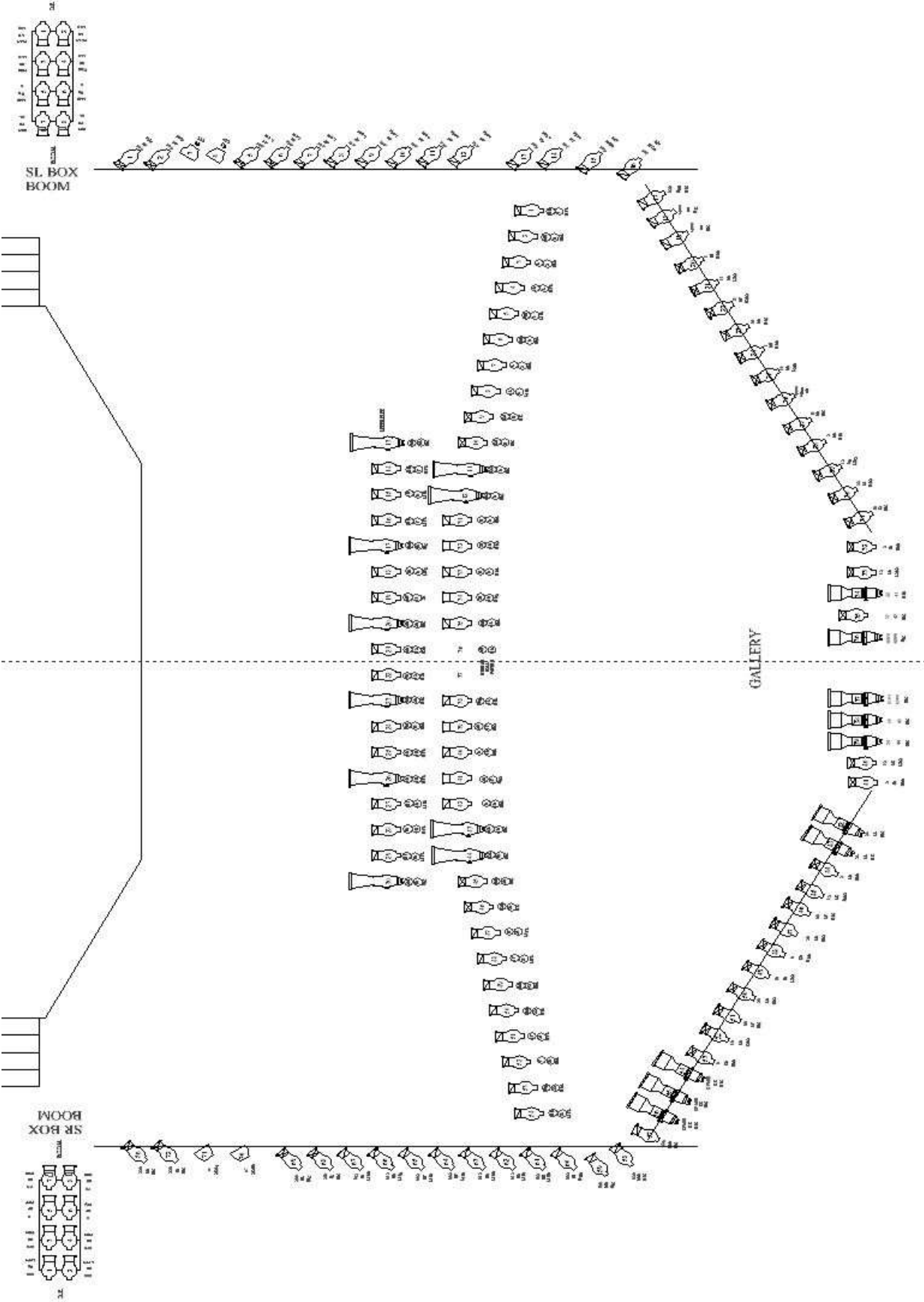
LIGHTING MAGIC SHEET

| | | | |
|---|--|--|---|
| <u>PINK FOH (fronts)</u> 7 6 5 4 3 2 1 | <u>BLUE FOH (fronts)</u> 17 16 15 14 13 12 11 | <u>AMBER FOH (fronts)</u> 26 25 23 22 21 | <u>n/c FOH (fronts)</u> 33 32 31 |
| <u>BOX BOOM PINK</u> (mainly for apron) 9 8 303 301 | <u>BOX BOOM BLUE</u> (mainly for apron) 19 18 313 311 | <u>FRONT DARK BLUE WASH</u> 35 | <u>LED WASH</u> 56 57 58 59 60 51 52 53 54 55 46 47 48 49 50 41 42 43 44 45 61 64 62 63 |
| <u>MOVERS</u> 73 74 75 71 72 | <u>BLUE CYC</u> 282 281 280 | <u>RED CYC</u> 285 284 283 | <u>AMBER CYC</u> 288 287 286 |
| <u>PINK HI SIDES</u> 90 85 89 84 88 83 87 82 86 81 | <u>BLUE HI SIDES</u> 100 95 99 94 98 93 97 92 96 91 | <u>BLUE BACKWASH</u> 128 129 130 131 132 133 134 135 136 137 138 139 | <u>SHINS (optional)</u> 218 214 217 213 216 212 215 211 |
| <u>LADDER PINK</u> 178 174 177 173 176 172 175 171 | <u>LADDER N/C GOBO</u> 188 184 187 183 186 182 185 181 | <u>LADDER AMBER</u> 198 194 197 193 196 192 195 191 | <u>LADDER LAVENDAR</u> 208 204 207 203 206 202 205 201 |
| <u>APRON RED</u> 312 312 | <u>APRON AMBER</u> 302 302 | <u>APRON BLUE</u> 318 317 316 315 | <u>APRON PINK</u> 305 306 307 308 |
| <u>APRON N/C</u> 321 322 323 324 | <u>SOLOS SPOT SPECIALS</u> 297 298 299 | <u>MIRROR BALL</u> 220 219 | |

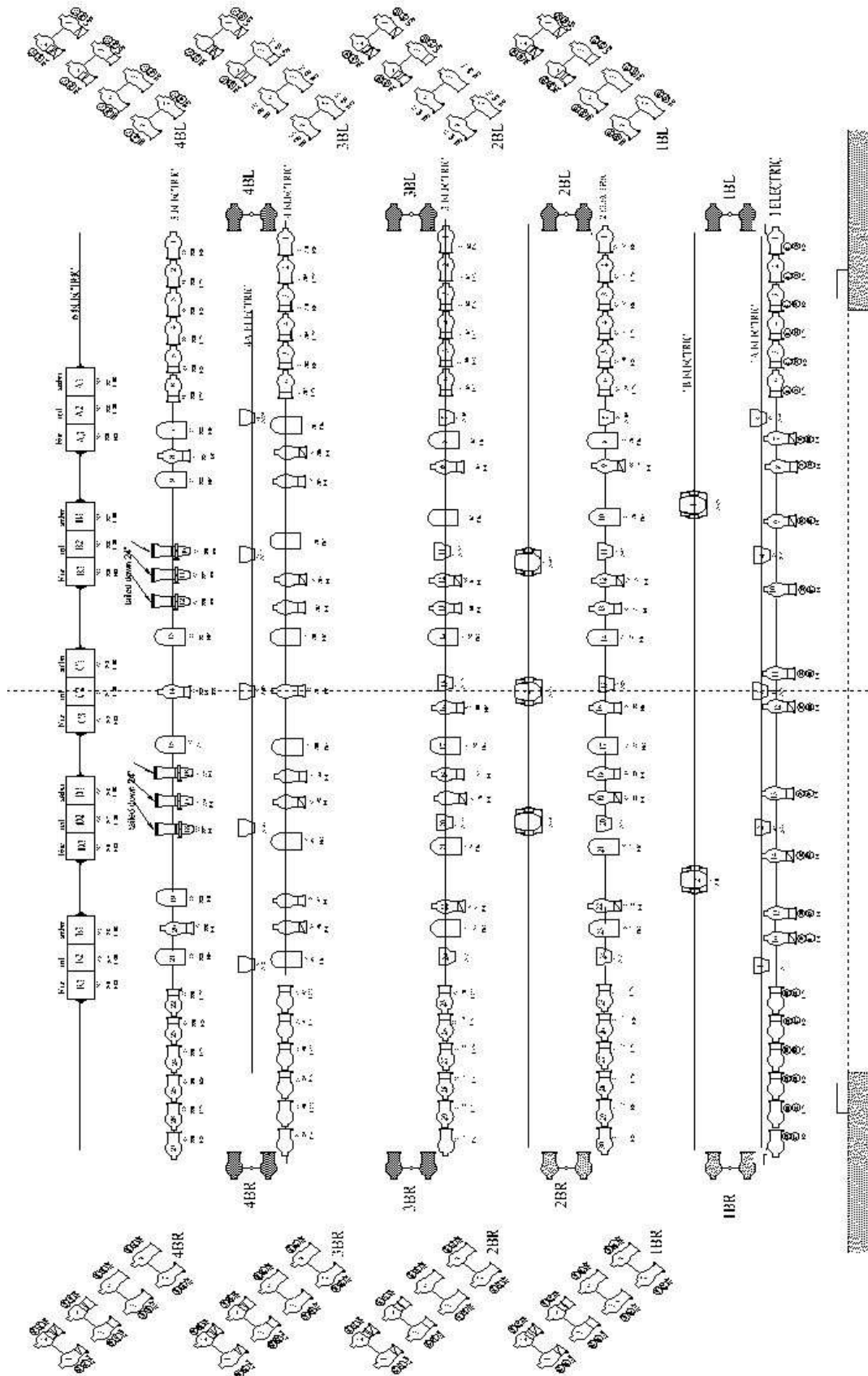
FOCUSABLE UNITS

| | | | |
|--|---|--|--|
| <u>1ST ELEC</u> 101, 102, 103, 104, 105, 151, 152, 153, 154, 167 | <u>2ND ELEC</u> 106, 107, 108, 109, 110, 155, 156, 157, 158 | <u>3RD ELEC</u> 111, 112, 113, 114, 115, 159, 160, 161, 162 | <u>4TH ELEC</u> 116, 117, 118, 119, 120, 163, 164, 165, 166 |
| <u>5TH ELEC</u> 121, 122, 123 | | | |

Lighting Plot: FOH



Lighting Plot: Stage



CIRCUIT LOCATION

| CIRCUIT | Location | Notes |
|----------|----------------------------------|--------------------------|
| 1-24 | FOH Cove | |
| 25-38 | Technical Gallery SL | |
| 39-46 | Technical Gallery REAR | |
| 47-60 | Technical Gallery SR | |
| 61-64 | Box Boom SL | |
| 65-68 | Box Boom SR | |
| 69-74 | Orchestra Pit | |
| 75-80 | Socapex Breakout SL | |
| 81-86 | Socapex Breakout SR | |
| 87-92 | Socapex Breakout SL | |
| 93-98 | Socapex Breakout SR | |
| 99- 104 | Socapex Breakout SL | |
| 105-110 | Socapex Breakout SL | 4'4" from Plaster Line |
| 111-116 | Socapex Breakout SR | 4'6" from Plaster Line |
| 117-128 | Socapex Breakout SR | 8' from Plaster Line |
| 129-134 | Socapex Breakout SR | 9'10" from Plaster Line |
| 135-140 | Socapex Breakout SR | 10'10" from Plaster Line |
| 141-146 | Socapex Breakout SL | 13'1" from Plaster Line |
| 147-152 | Socapex Breakout SR | 13'4" from Plaster Line |
| 153-164 | Socapex Breakout SR | 16'4" from Plaster Line |
| 165-170 | Socapex Breakout SR | 18'10" from Plaster Line |
| 171-176 | Socapex Breakout SR | 19'10" from Plaster Line |
| 177-182 | Socapex Breakout SL | 22'2" from Plaster Line |
| 183-188 | Socapex Breakout SR | 22'6" from Plaster Line |
| 189-200 | Socapex Breakout SR | 25'6" from Plaster Line |
| 201-206 | Socapex Breakout SR | 28' from Plaster Line |
| 207-212 | Socapex Breakout SR | 29' from Plaster Line |
| 213-224 | Socapex Breakout SL | 30' from Plaster Line |
| 225-236 | Socapex Breakout SR | 30' from Plaster Line |
| 237-242 | Socapex Breakout SL | 31'6" from Plaster Line |
| 243-248 | Socapex Breakout SR | 31'6" from Plaster Line |
| 249-254 | Fly Gallery SL | |
| 255-260 | Fly Gallery SR | |
| 261-264 | DSL Wall | |
| 265-268 | DSR Wall | |
| 269-272 | USL Wall | |
| 273-288 | USR Wall | |
| NON-DIMS | | |
| A,B | FOH Cove and Technical Galleries | |
| C,D | Fly Galleries SL and SR | |
| E,F,G,H | DSL, USL, DSR, USR | |

ORCHESTRA EQUIPMENT AND CONCERT SHELL

ORCHESTRA EQUIPMENT

| | |
|----|------------------------------|
| 96 | Wenger Orchestra Chairs |
| 6 | Cello Chairs |
| 86 | Music Stands w/lights |
| 1 | Conductor's Podium and Stand |
| 10 | Stools |

RISERS: Black skirting is available for risers

| | |
|----|--------------|
| 10 | 4'x 8'x 8"h |
| 10 | 4'x 8'x 16"h |
| 20 | 4'x 8'x 24"h |

STEP UNITS:

| | |
|---|----------------------|
| 2 | 8" single step units |
| 2 | 16" step units |
| 2 | 24" step units |

PIANOS (Note: Pianos tuned only by House Tuner Only - tuning not included)

| | |
|---|-----------------------------------|
| 2 | 9' Steinway Concert Grand Model D |
| 1 | 7' Steinway Grand Model B |
| 4 | Yamaha Uprights |

ORCHESTRA CONCERT SHELL:

The Amaturio Theatre is equipped with 13 Wenger acoustical shell walls that can be arranged in a variety of configurations. Each shell piece is 6' wide in approximately 12' high with a 2' outrigger on the rear. Each shell piece is easily moveable with locking casters.



DRESSING ROOM / WARDROBE / SUPPORT SPACES

DRESSING ROOMS:

All dressing rooms are located directly behind the stage, and are accessible from either side. The numbering starts closest to SL, and proceeds across to SR. All rooms are equipped with showers, toilets, mirrors, chairs and costume racks. The smaller dressing rooms have a counter running the length of one long wall, while the larger rooms have counters running along both long walls. Companies working under an AEA contract should use the smaller number for dressing room assignments. There is an audio feed from the stage throughout the area.

| Dressing Room # | Number of People | Dimensions |
|-----------------|------------------|------------------|
| Room #115 | 6-8 people | 8' 6"W x 18' 4"L |
| Room #116 | 12-16 people | 14' W x 18' 4"L |
| Room #117 | 12-16 people | 14' W x 18' 4"L |
| Room #118 | 6-8 people | 8' 6"W x 18' 4"L |



WARDROBE ROOM:



There is no dedicated Wardrobe room at the Broward Center, just a small room for minor repairs. Shows booked into the Au-Rene Theatre have priority use of this room.

LAUNDRY ROOM:

The center has one laundry room to facilitate both theaters. It is located on stage level between the two theater spaces. There are three washers and three dryers in the laundry room, as well as a double sink.

Arrangements must be made in advance, as shows booked into the Au-Rene Theatre have priority use of this room.



CARPENTRY SHOP

Broward Center has a small wood shop for general repairs and limited welding equipment for metal & steel, located in the Au-Rene backstage. Its availability is dependent on activity in the Au-Rene Theatre.



GREEN ROOM / WARM-UP SPACE



The Amaturio Green Room is 35' x 11' 6", and has a commercial grade coffee maker, standard refrigerator/freezer, and a sink. There is an audio feed from the stage, and a CCTV connection (television not included). It can be used as a Catering Room, a Wardrobe Room, a Production Office or a Rehearsal/Warm-up room. It has a section of mirrors and barres.

There are additional mirrors and barres outside of dressing room #118, and in the stage entrance to Up Stage Left.



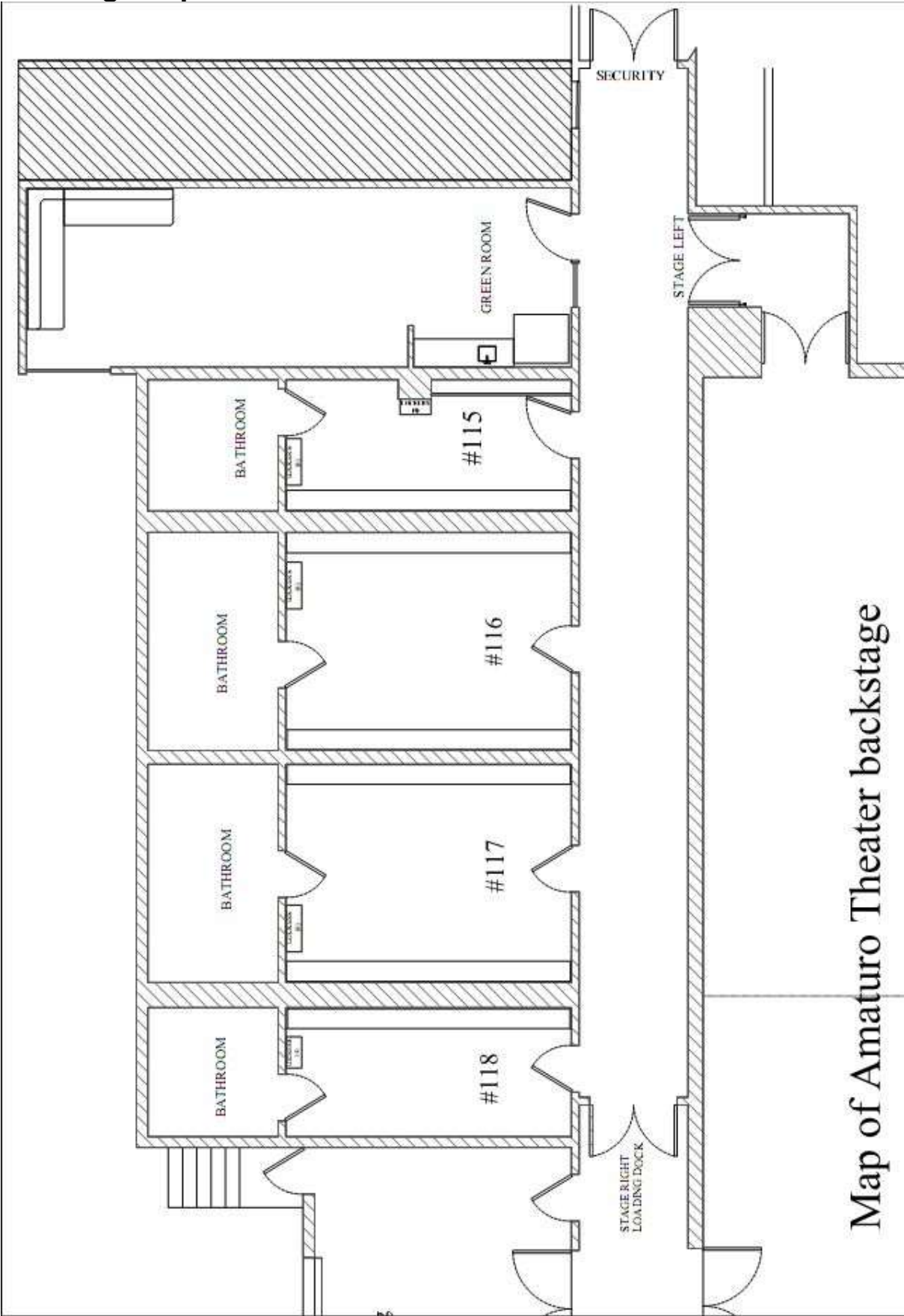
SUPPORT SPACES

The Amaturio Theater is not equipped with office space for clients, but each dressing room, as well as the Green Room, can be equipped with a phone line and a high-speed internet connection. Room #118 has been the traditional favorite for production use, but any of the rooms can set up as an office. Phone and internet connections require advance notice, as the available outside phone lines must be shared with the Au-Rene Theater.

ADDITIONAL RENTAL SPACES

The following space must be reserved in advance, and is subject to availability: The Einstein Room is 36' x 18' and is located next to Au-Rene Green Room. It has no mirrors or bars.

Backstage Map



Map of Amature Theater backstage