

TECHNICAL SPECIFICATIONS

AMATURO THEATER



BROWARD CENTER
FOR THE PERFORMING ARTS

Fort Lauderdale, Florida
October 2021

Full Occupancy (with masks)

TABLE OF CONTENTS

GENERAL CONTACT INFORMATION	2
BACKSTAGE SECURITY CREDENTIALS.....	3
MAP & DIRECTIONS.....	4
TRUCK, BUS & VEHICLE PARKING	4
SITE PLAN.....	5
LOADING DOCK INFO	7
SEATING CAPACITY	8
SEATING CHART	9
STAGE SPECIFICATIONS.....	10
ORCHESTRA PIT / STAGE THRUST INFORMATION	10
STAGE DIMENSIONS & GROUND PLAN	11
RIGGING SPECIFICATIONS / OBSTACLES.....	13
SOFTGOODS INVENTORY	13
HANGING PLOT / LINE SCHEDULE	14
SOUND AND COMMUNICATIONS	16
LIGHTING INFORMATION	21
POWER DISTRIBUTION	21
GENIE LIFT	21
DIMENSIONAL INFORMATION	22
ORCHESTRA EQUIPMENT / CONCERT SHELL INFORMATION	27
DRESSING ROOMS/SUPPORT SPACES.....	28
BACKSTAGE MAP.....	31

Amaturo Theatre

at the

Broward Center for the Performing Arts

201 Southwest 5th Avenue

Fort Lauderdale, FL 33312

Main Office (954) 522-5334 (M-F 8:30A-5:30P)

Main Fax (954) 468-2549

Box Office (954) 468-3338

PRODUCTION

Director of Production	Herman Montero	(954) 468-2557	hmontero@browardcenter.org
Production Manager	Christopher Jahn	(954) 765-5802	cjahn@browardcenter.org
Production Supervisor	Christina Baroniel	(954) 468-3317	cbaroniel@browardcenter.org
Production Coordinator	Oriana Urdaneta	(954) 468-6906	ourdaneta@browardcenter.org
Production Coordinator	Jessica Mendoza	(954) 468-3319	jmendoza@browardcenter.org
Production Fax		(954) 468-3315	
Stage Door Security Desk		954) 468-3323	

EVENT SERVICES

Vice President of Operations	Shelly Bradshaw	(954) 468-2696	sbradshaw@browardcenter.org
Director of Event Services	Pablo Urquilla	(954) 468-3313	purquilla@browardcenter.org
Event Services Manager	Kerry McCloskey	(954) 414-6905	kmccloskey@browardcenter.org
Event Services	Brandy DeMil	(954) 660-6350	bdemil@browardcenter.org

STAGE LABOR - I.A.T.S.E. Local 500

The Broward Center for the Performing Arts employs members of I.A.T.S.E. Local 500 for all productions in the Au-Rene Theatre. For further information, please contact Production Staff for labors rates and work rules.

Head Carpenter	Robert Vega	(305) 342-4361	rvega@browardcenter.org
Head Audio	Parrish Thompson	(954) 707-7500	pthompson@browardcenter.org
Head Electrician	Quanikqua Bryant	(786) 501-5559	qbryant@browardcenter.org
AMA Assistant	Franco Seminario	(702) 462-3940	gseminario@browardcenter.org

ADDITIONAL CONTACTS INFORMATION

Vice President of Programming	Matt McNeil	(954) 468-3312	mmcneil@browardcenter.org
Director Of Programming	Jill Kratish	(954) 468-3295	jkratish@browardcenter.org
Director of Guest Services	David Dillon	(954) 468-3305	ddillon@browardcenter.org
Director of Security	Tom Harrington	(954) 660-6356	tharrington@browardcenter.org
Admin. Mgr F&B – Merch	Mark Deuser	(954) 660-6387	mdeuser@browardcenter.org

COVID 19 SAFETY POLICIES

These guidelines have been developed in collaboration with Cleveland Clinic and follow the guidance of state and local health officials and the Centers for Disease Control (CDC). These protocols have been submitted to and approved by Broward County and are in line with best practices in our industry.

Venue Access

The venue is responsible for ensuring that all CDC and local DOH Guidelines related to Covid-19 are enforced. All visitors must enter the building through the Warten/Cideko Stage Door entrance, located at the rear of the building facing 7th Ave. When you arrive, please proceed to check in at the Security Desk.

All Performers and Support Team will be:

- Prohibited from performing if ill, running a temperature above 100.4 or displaying symptoms similar to COVID-19.
- Required to wear face coverings at all times in all public and common areas except while onstage performing or in individual dressing room with the door closed.
- Required to practice good hand washing hygiene and use hand sanitizer frequently.
- Performers and support staff must adhere to all COVID-19 mitigation laws, regulations and guidelines issued by federal, state and local governmental authorities.
- Performers and support staff who are unable or unwilling to comply with these policies will not be allowed on the Broward Center campus.

Masks

Limiting face-to-face contact with others is the best way to reduce the spread of Covid-19. Masking along with physical distancing shall be practiced, except when doing so is incompatible or interferes with their job responsibilities or part of the performance during the tour such as performing on stage or other instances discussed in this document.

- All crew, musicians, employees and cast members will wear a mask except when it is incompatible or interferes with their job responsibilities or part of the performance.
- Everyone should avoid touching their eyes, nose, mouth.
- Face shields may be used *in addition to* masks for certain activities discussed later in the document.
- If employees use reusable masks, they are responsible for laundering after each use.
- Crew members should put on a fresh mask or launder it after load in and before show call.
- Approved face masks shall be worn when in all public areas
 - Approved masks include disposable medical procedure masks, re-usable multi-layer cloth masks, and multi-layer paper masks (see attachment)
 - Masks should not have a valve, as that discharges unfiltered breath into the air
 - Neck gaiters and bandanas do not adequately filter air, and are not approved

Hand Hygiene

Hand hygiene is a key element of infection prevention and needs to be practiced widely.

Hand washing facilities will be readily available and should be used frequently.

- Alcohol-based hand sanitizer with at least 60% alcohol will also be readily available and strategically placed for use.
- Hand sanitizer and cleaning wipes will be placed in all workboxes and at the call desk.
- Everyone would be trained on hand hygiene practices (duration and when to wash or sanitize hands).
- Handshaking, hugging and other physical contact should be avoided unless it is part of their job responsibilities or part of the performance.
- Hand hygiene must be practiced prior to putting on and after removing one's face mask.

Physical Distancing

No visitors will be allowed backstage unless deemed essential and have received prior approval from the touring company. Essential visitors include persons working directly with the production. Essential visitors must be masked.

- Autograph signings, meet-n-greets and backstage tours policy will be set by the visiting company.
- The venue may be shared with other shows and/or organizations. The venue will provide cleaning between events in shared spaces if the events are contiguous in the same space. If the events are concurrent and shared spaces will be occupied at the same time (ex. hallways, bathrooms, green rooms) currently recommended protocols relating to the face coverings, hand hygiene, physical distancing and sanitation must be followed. \

Food & Beverage

All local public health regulations regarding preparation and distribution of food should be followed.

- While buffet style catering may be provided, no self service will be allowed. A server must be provided for this style of catering.
- Disposable tableware and prewrapped cutlery should be used. Only single use cup and mugs should be used.
- Hand hygiene and physical distancing must be maintained while eating and before handling any food.
- As face coverings cannot be worn during eating, adequate eating space should be provided to ensure physical distancing can be maintained.
- Eating and drinking should be prohibited anywhere in the venue other than designated areas.

Wardrobe

- If Wardrobe personnel are required, these workers will be required to wear disposable nitrile gloves while dressing performers in addition to face covering.

Hair and Make-Up

- Hair and Make-Up personnel should wear a mask, face shield and nitrile gloves during the application of make-up. New gloves should be applied for each individual performer and disposed of properly.

•

GUEST ENTRY POLICY

A reminder to all artists, road crew and touring companies that guests using the artist's comp tickets that will not receive the Know Before You Go emails. The most current policies will always be available at the link below so if you share that with them, they will have the most up to date information.

<https://www.browardcenter.org/visit/guest-entry-policy>

Current Policy:

- All guests age 2 and over are required to wear a suitable face covering consistent with CDC guidelines (completely covering the nose, mouth and under the chin) while inside at any theater, except when eating or drinking in designated areas.
- All guests age 12 and over are required to present documentation (printed or digital) to event staff before entering the theater showing a negative COVID-19 PCR test result conducted within 72 hours prior to the performance, or a negative COVID-19 Antigen test result conducted within 24 hours prior to the performance start time. As an alternative, fully vaccinated guests have the option of presenting documentation (printed or digital photo) to event staff showing full vaccination status (i.e., completion of final dose at least 14 days prior to the performance date).
- Any special conditions or policy changes for upcoming events including face coverings, proof of vaccinations or COVID-19 test requirements, will be sent directly to ticketholders and updated regularly on Broward Center's website [BrowardCenter.org](https://www.browardcenter.org).

- Matching photo ID will be required for adults 18 and over.

Please be advised that it is the responsibility of the ticket purchaser to communicate these policies to whomever they may be providing tickets. Performance ticket holders who do not comply with these policies may be required to leave the theater without refund.

BACKSTAGE CREDENTIALING POLICY

To increase the safety of our backstage environment, the Broward Center for the Performing Arts (BCPA) will be requiring all BCPA staff, stagehands, vendors, performers and their respective representatives to have and display a credential at all times while in any of our backstage areas.

Credential Criteria

Credentials are to be produced, maintained, distributed and collected by the entity performing in a BCPA venue. Although it would be optimal to have every individual's name and photo on a credential, this may not be feasible in all situations. At a minimum, the credential must have the following characteristics:

- Credit card size or larger and double sided
- Include the name and logo of their organization
- Plastic or laminated
- Affixed to a belt-style clip or lanyard
- Be difficult to easily replicate



Displaying and Wearing Credential

- Present credential at the Security Desk
- Conspicuously wear credential while backstage
- Everyone must have their own credential
- Provide a sample copy of credentials to BCPA Venue, Production and Security in advance
- **Credentials are NEVER expected to be worn on stage**

Exceptions

- Headliner artists who remain on tour buses or who arrive immediately prior to showtime are not expected to display/wear a credential
- Children performing in recitals or BCPA Education productions are not expected to display/wear a credential, but must be accompanied and escorted by someone wearing credentials

MAP & DIRECTIONS

The Broward Center is conveniently located in the Riverwalk Arts & Entertainment District in downtown Fort Lauderdale, equidistant between Dade and Palm Beach Counties and can be reached by several routes.

From Interstate-95:

Exit at Broward Boulevard, Go east.

From Florida Turnpike (southbound):

Exit at Sunrise Boulevard, Go East to South-bound I-95, exit Broward Boulevard, Go east.

From Florida Turnpike (northbound):

Exit at I-595, Go East to North-bound I-95, exit Broward Boulevard, Go east.

To Backstage Parking Lot:

From Broward Boulevard turn right (South) onto SW 7th Avenue (Avenue of the Arts). Turn left at West Las Olas Blvd (the second light). Take an immediate left into the backstage lot security gate. Push the buzzer to contact guard. Identify yourself and guard will let you enter.

To Parking Garage and Valet:

Broward Boulevard. Turn South onto SW 5th Avenue. The Arts and Science Parking Garage is on the immediate right, or, proceed straight ahead, cross 2nd Street (Himmarshee St.) and continue to the top of the hill for valet service.

From Fort Lauderdale Airport to Backstage Lot:

Take the "US1 / Federal Highway Northbound" exit out of the Airport. Travel North on US1 to SE 17th Street Causeway. Turn left (West) and go to SW 4th Avenue and turn right (North). SW 4th Avenue will become SW 7th Avenue at the bridge. Go over the bridge, turn right at West Las Olas Blvd . Take an immediate left into the backstage lot security gate. Push the buzzer to contact guard. Identify yourself and guard will let you enter.

North Gate - Trucks going to Loading Dock:

From Broward Boulevard turn South onto SW 5th Avenue. Turn right at Second Street (Himmarshee Street). The gate entrance to back-stage lot is on your left. Push the buzzer to contact guard. Identify yourself and guard will let you enter.

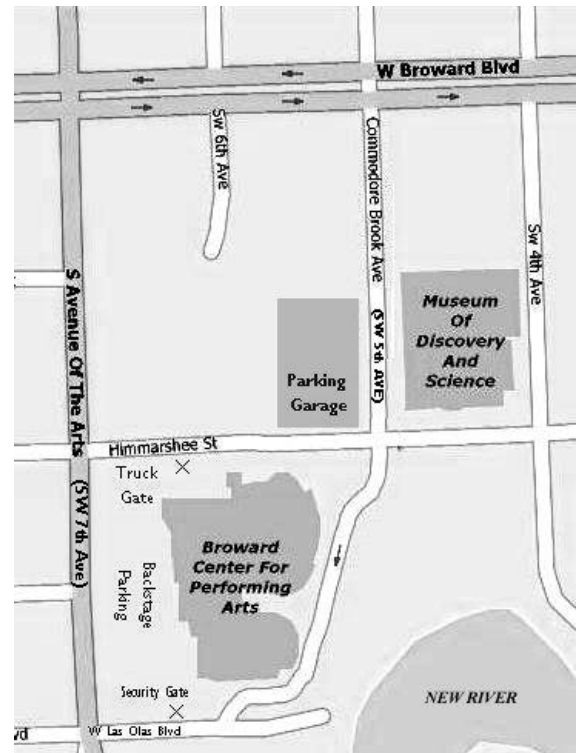
GPS Address (do not use for anything else!)

To the backstage Security gate:
641 West Las Olas Boulevard
Fort Lauderdale;

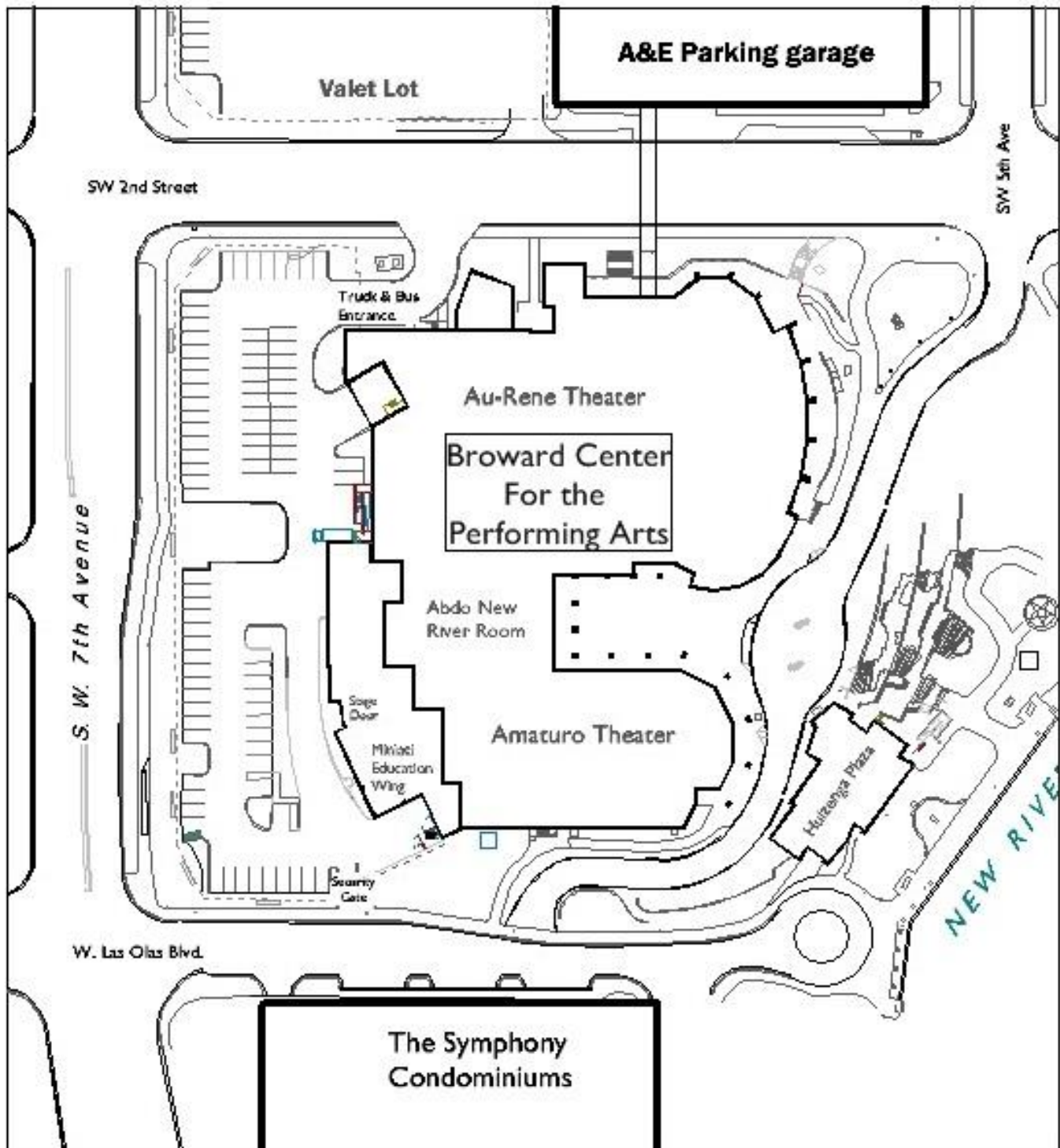
To the North Gate (truck & bus parking)
582 SW 2nd Street
Fort Lauderdale FL

TRUCK, BUS & VEHICLE PARKING

Truck & Bus Parking on site is limited. There is parking available directly backstage in the lot for 10 cars and additional parking available for 40 cars in the Arts and Science parking garage located across the street from the theatre. All parking arrangements must be discussed with Production Staff prior to the event for necessary passes and badges.



Broward Center Site Plan

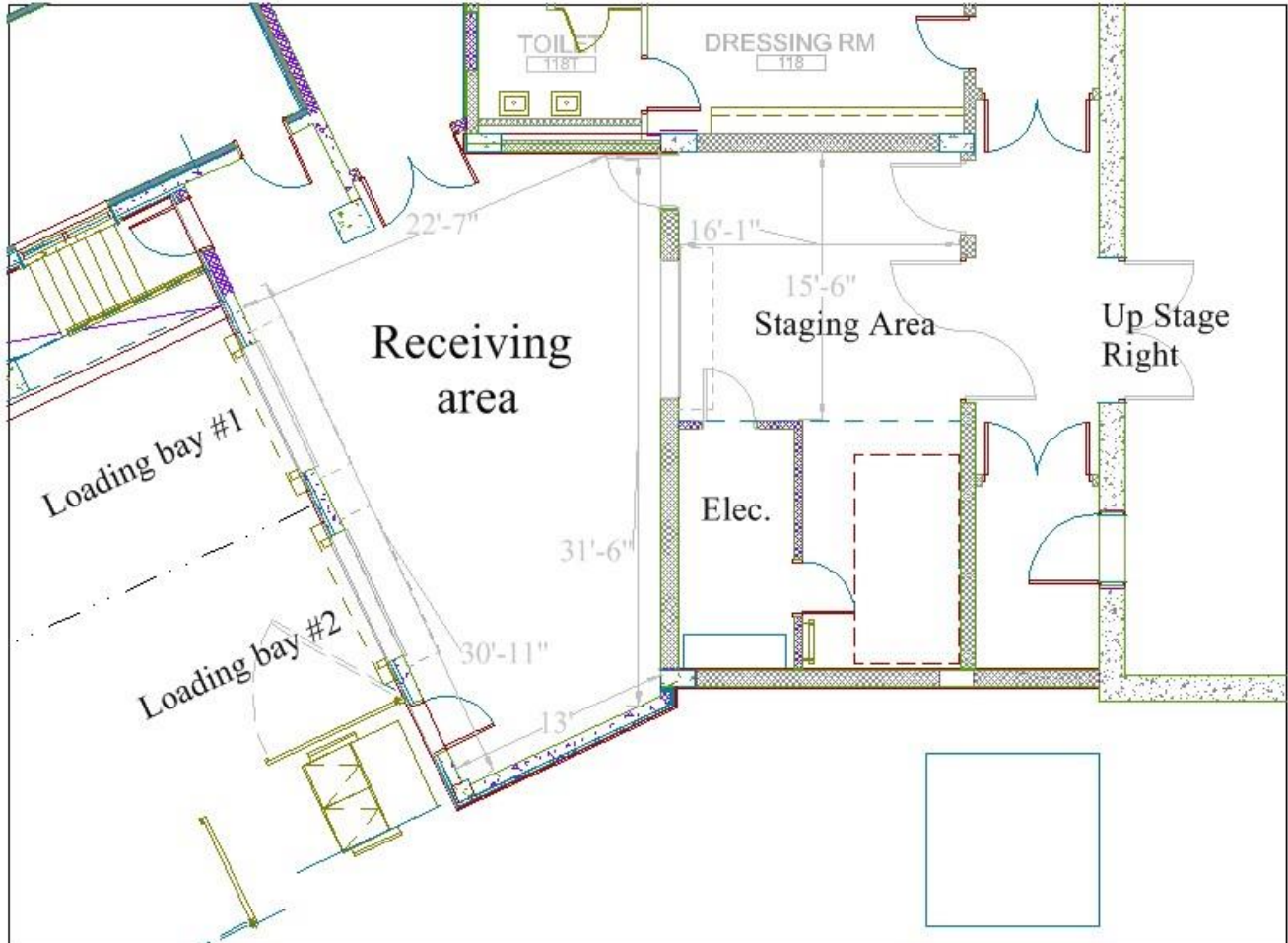


BCPA Parking Lot



LOADING DOCK

The Amaturio Loading Dock is located at the southwest corner of the building at S.W. 7th Ave and Las Olas Boulevard, but trucks must use the entrance on the north end of the parking lot on Himmarshee Street. There are two loading bays. The dock is 3' high, and the receiving doors are 8' wide by 8' high. The doors from the receiving area onto the stage are 7'-6" w x 25'h'.



The staging area is used to store the Amaturio's orchestra shell, as well as other equipment, depending on activities within the building. This will not impede loading equipment into the theater, but if you need that space during your event, please discuss with the Production Department in advance of your event.

Prior notice is necessary if the dock will be accommodating a tractor trailer longer than 40'; part of the lot must be reserved so the truck can maneuver.

Shore Power is available (inside the receiving area long shared wall with the electrical closet), but you must supply your own tails.

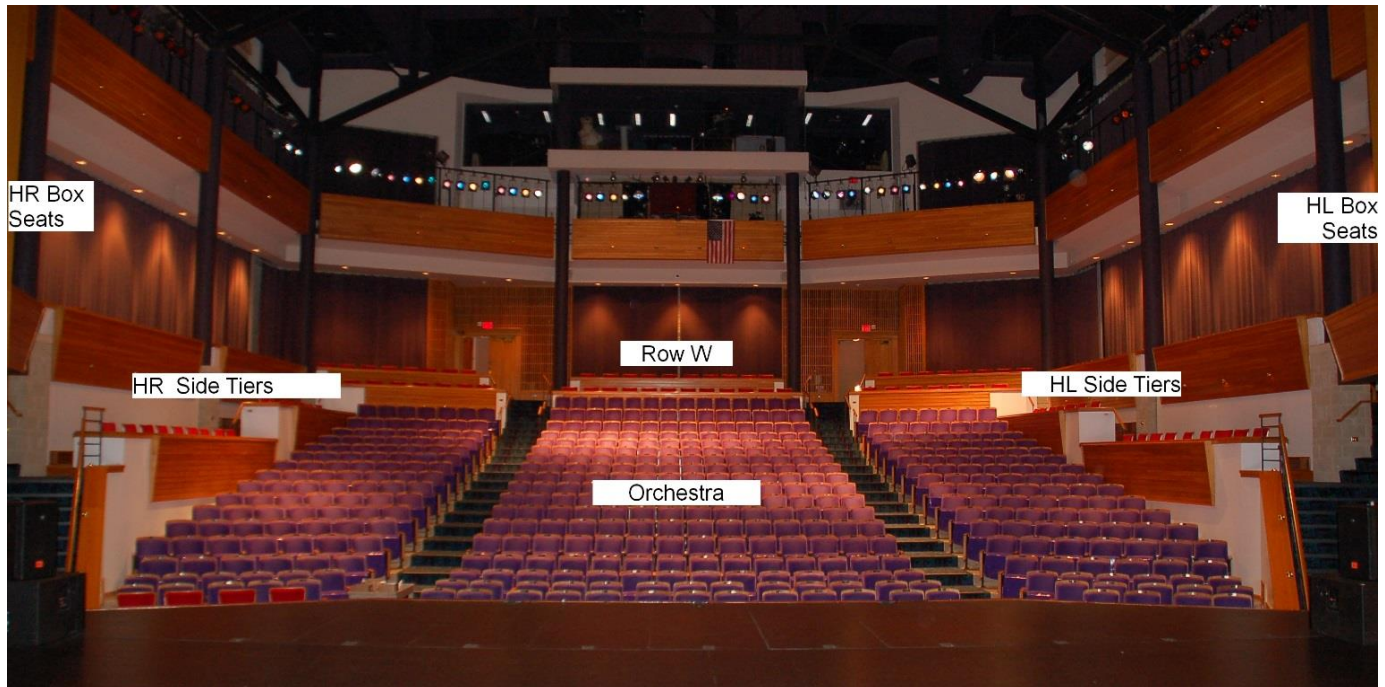
150' is needed to reach the bus parking spot from the loading dock



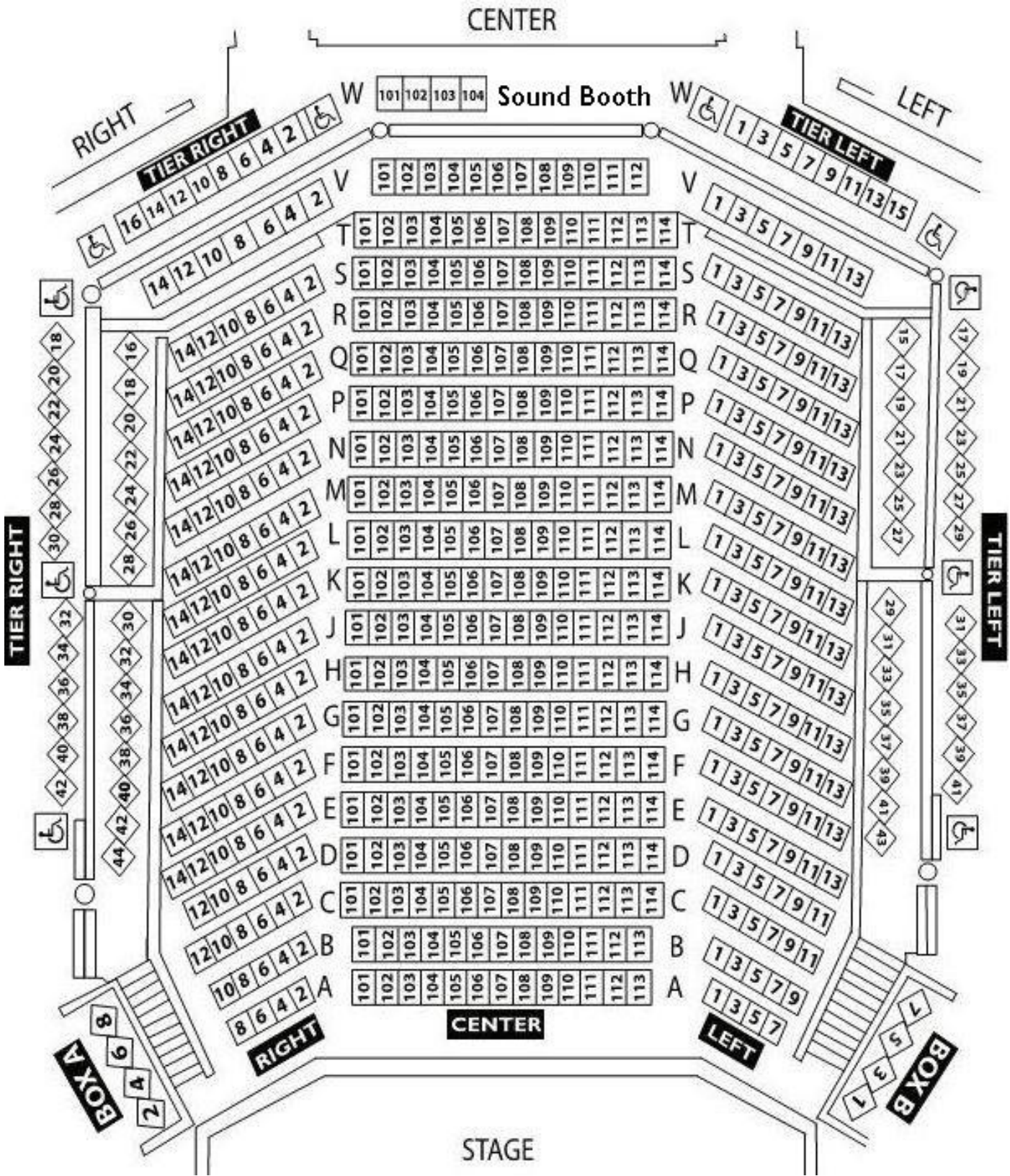
SEATING INFORMATION AND CAPACITY

(MAXIMUM SEATING CAPACITY IS 582 SEATS (See seating map on follow page))

Orchestra Section	Rows A – T	488 seats
Side Tiers	Rows V – W	90 Seats
Box Seats		8 Seats
		Total 582 seats



SEATING CHART



STAGE SPECIFICATIONS

STAGE FLOOR is a semi-sprung floor with double layer tongue and groove plywood on aluminum sleepers over rubber blocks, and finished with black masonite/bennelex. The rubber blocks are surrounded by a steel channel which limits over-decompression. Any damage to floor incurred by a production must be restored.

HEIGHT OF GRID	50'
HEIGHT OF PROSCENIUM	25'
WIDTH OF PROSCENIUM	39' 10"
HEIGHT OF GALLERIES	
Upper Loading Gallery	50'
Middle Loading Gallery	26' 6"
Pin Rail SL	25' 5"
DEPTH OF STAGE (from Plaster Line)	40'
WIDTH OF STAGE	75'-6"
Width of stage (center to SR)	32'
Width of stage (center to SL)	39' -6"
CENTER STAGE TO PINRAIL SR	36'
APRON (from Plaster Line)	1' -7"
(from House Curtain)	2' -7"
FULL THRUST (from Plaster line)	10' -7"
(from House Curtain)	11' -7"
HEIGHT OF STAGE (seating level to stage level)	3' -4"

ORCHESTRA PIT

The Pit has a cover that extends the stage apron to 10' -7". This cover consists of 15 pieces that are manually moved down to create the floor of the Pit for use. The Pit under-hang is 5' -6"

Opening (Stage Edge to DS Pit Wall)	9'
Overall Dimensions (including pit under-hang)	40' x 14' 6" (D shaped)
Approximate Capacity of Musicians	35
HEIGHT OF PIT (pit level to stage level)	8' -3"

Architectural floor plan of a room with various dimensions and furniture. The plan includes a room with a door on the left, a room with a door on the right, and a central area with a door. Dimensions are provided in feet and inches. The plan also shows a room with a door on the left, a room with a door on the right, and a central area with a door. Dimensions are provided in feet and inches. The plan also shows a room with a door on the left, a room with a door on the right, and a central area with a door. Dimensions are provided in feet and inches.

This architectural section view illustrates the internal structure of a building. Key features include:

- Structural Elements:** A series of vertical columns supporting a roof structure with a truss system. The roof is labeled 'ROOF SLAB' with an elevation of 'ELEV. 30' 0" (9.14 m)'. Below the roof, a 'CONCRETE BEAM' is shown at 'ELEV. 28' 0" (8.53 m)' and a 'STEEL COLUMN' at 'ELEV. 27' 0" (8.23 m)'.
- Floor Levels:** The 'FLOOR SLAB' is at 'ELEV. 26' 0" (7.92 m)'. A 'GALLERY' is located at 'ELEV. 25' 0" (7.62 m)'.
- Interior Spaces:** A 'Lobby' is shown at the bottom left, and a 'Staircase' is located in the center. A 'Lighting Fix. 12' 0" (3.66 m)' is indicated in the lobby area.
- Grid System:** A grid of letters (A through T) is used to identify specific locations along the horizontal axis. The letters are arranged in a sequence: A, B, C, D, E, F, G, H, J, K, L, M, N, P, Q, R, S, T. The letter 'I' is missing from the sequence.
- Other Labels:** 'Lighting Control' and 'Sound Control' are labeled near the top of the section. A 'Lower Level' is indicated at the bottom right.

RIGGING SPECIFICATIONS

Single purchase counterweight, hand-operated line sets operated from the deck stage right.

NUMBER OF LINE SETS	73 line sets, 6" on center
GRID HEIGHT	50'
TRAVEL DISTANCE	48'
MAX WEIGHT PER ARBOR	1400 lbs
TOTAL WEIGHT AVAILABLE	102,200 lbs
LENGTH OF BATTENS	48'
TAB PIPES (5 pairs)	26' OC SL & SR

HOUSE CURTAIN is a manual counterweight guillotine center split velour curtain located 5" upstage from smoke pocket. Curtain is operated from stage level down stage right and is not part of the operating rail. House Curtain is permanent and cannot be moved or removed.

SOFT GOODS INVENTORY

- 6 black velour borders (10' h x 48' w)
- 12 black velour legs (27' h x 10' w)
- 8 Black Velour tabs (27' h x 4' w)
- 1 black velour split traveler curtain (27' h x 45' w)
- 2 black velour curtains (27' h x 45' w)
- 1 black sharks tooth scrim (27' h x 48' w)
- 1 white cyclorama (27' h x 48' w)

Hanging Plot

SHOW:				
Line Set #	Position	House Hang	Show Hang	Weight
	0"	Smoke Pocket		
	5"	House curtain		
1	1'8"	#1 black border & choir mics		
2	2'2"	#1 Black Legs		
3	2'8"	Christie Projector Pipe		
4	3'2"	Electric #1		
5	3'8"			
6	4'2"			
7	4'8"			
8	5'2"			
9	5'8"			
10	6'2"	#1B Elec (movers)		
11	6'8"			
12	7'2"			
13	7'8"			
14	8'2"	#2 black border		
15	8'8"	#2 black legs 19'/extra masking		
16	9'2"	9'x16' Screen		
17	10'2"	#2 Electric w/ LED's		
18	10'8"			
19	11'2"			
20	11'8"	Black Scrim		
21	12'2"			
22	12'8"			
23	13'2"			
24	13'8"	#2C Electric Moving Lights		
25	14'2"			
26	14'8"	#3 Black Border		
27	15'2"	#3 black legs 19'		
28	15'8"			
29	16'2"	Blackout Drop		
30	16'8"			
31	17'2"	#3 Electric w/ LED's		
32	17'8"			
33	18'2"			
34	18'8"			
35	19'2"			

36	20'1"			
37	20'8"			
38	21'2"	#4 black border		
39	21'8"	Traveler Track Storage		
40	22'2"	#4 black legs 19'		
41	22'8"			
42	23'2"			
43	23'8"			
44	24'2"	#4 Electric		
45	24'8"			
46	25'2"			
47	25'8"			
48	26'2"			
49	26'8"			
50	27'2"	Traveler Track Storage		
51	27'8"			
52	28'2"	#5 black border		
53	28'7"	#5 black legs 19'		
54	29'1"			
55	30'2"			
56	30'8"	Electric #5		
57	31'2"			
58	31'8"	#6 Border		
59	32'2"	Star Drop		
60	32'8"			
61	33'2"	Traveler B.O. Drop		
62	33'8"			
63	34'2"	#6 Electric (5 Far Cyc 3 Cir)		
64	34'8"			
65	35'2"			
66	35'8"	#6 Black Legs		
67	36'2"			
68	36'8"			
69	37'2"			
70	37'7"	White filled scrim-CYC		
71	38'1"	Old Blackout Drop		
72	38'6"			
73	38'11"	Rug Storage		

SOUND AND COMMUNICATIONS

SPEAKER CONFIGURATION

The Amaturto Theater has a stereo line array system, flown flanking the proscenium opening to cover the entire auditorium, with a flown sub array in the center.

Main Arrays

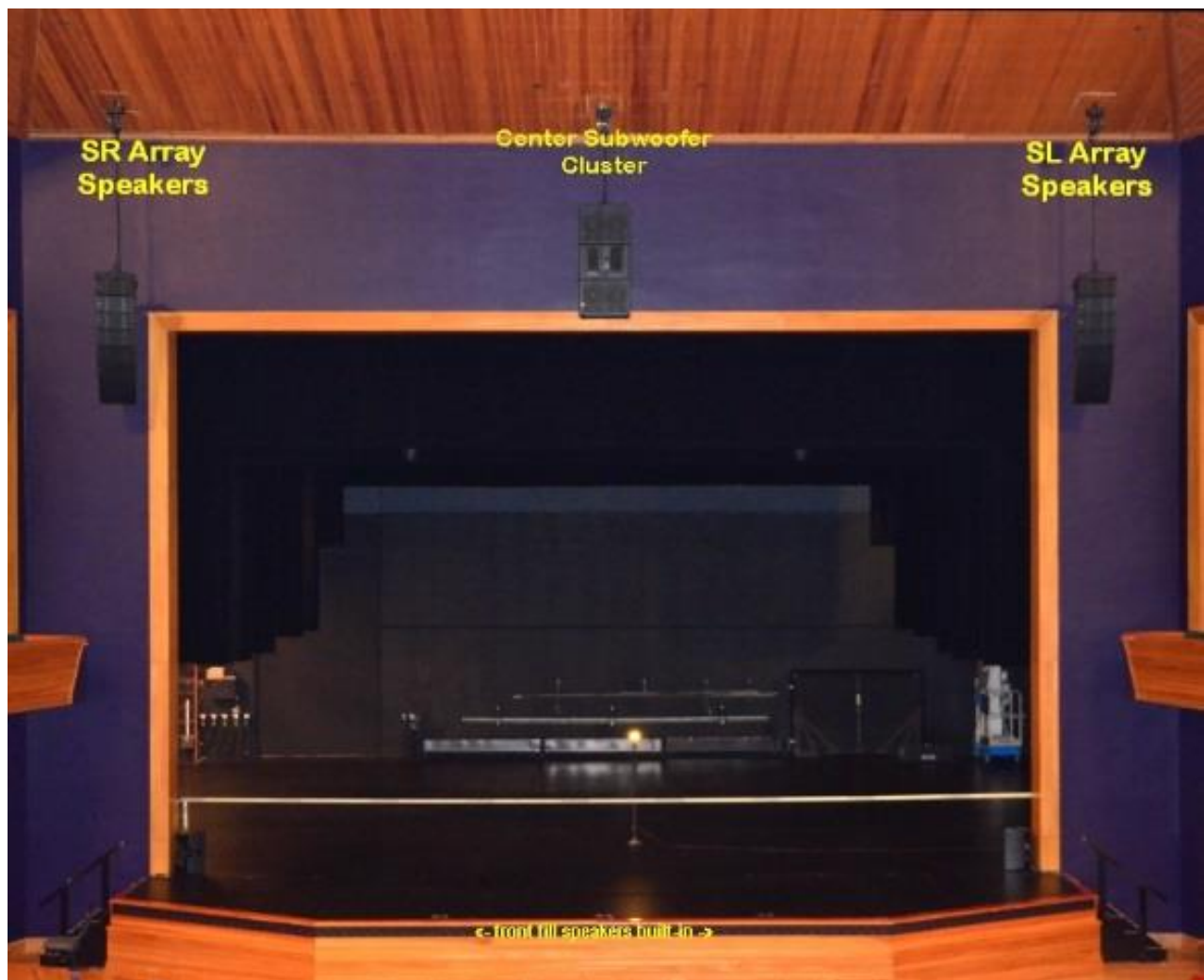
The primary speaker system consists of two (2) Meyers line arrays consisting of eight MINA compact curvilinear array speakers.

Sub Array

The sub-woofer array consists of three Meyers 500-HP compact high-power subwoofers.

Front Fills

The front fills consist of 98 JBL 8110h speakers built into the lip of the stage.



Effects Speakers

8- EAW LC12 (mounted on side and rear walls of the theater)(wired for Surround Sound)

SOUND MIX POSITIONS

There are two mixing position available in the Amaturro Theatre; the primary position is Row W, at the back of the house. The Alternate position is located along the center of the rear wall, in the Tech Gallery. It is fully open to the room. (See photo on page 20)

FRONT OF HOUSE CONSOLE

Midas Pro 3 IP Digital Console Control Centre with 36 Input Channels, 27 Mix Buses and 96 kHz Sample Rate

SOURCE GEAR

- 2 – Sony Mini Disc machines with Auto Pause
- 1 – TASCAM CD-RW901MK2 CD player/recorder

MONITORS & MICROPHONES

House Monitor Package

The Amaturio Theater is equipped to send five monitor mixes from the front of house console that we can send to 6 JBL MRX500 wedges. If more mixes are required, a separate monitor desk and operator will need to be brought in.

House Wireless Microphones

The Amaturio Theater is equipped with an Axient system. We have 8 receivers, 8 handheld wireless transmitters (with SM58 heads, and 4 KSM9 heads are also available), and 8 wireless bodypack transmitters.

Additional equipment

NOTE: The following Monitor Equipment and Microphone package is shared with other venues at the Broward Center and may not be available for your event *unless prior arrangements have been made* with Production Staff in advance of your event.

MONITOR CONSOLE:

Yamaha PM5D-RH

MONITOR SPEAKERS:

- 2 Shure in-ear monitors PSM700 w/ E3 SHU P7TRE3
- 10 powered wedge speakers Meyers UM100-P
- 2 Stage monitors Meyers USM-100P
- 4 Side Fill speakers Meyers UPQ-IP
- 4 powered subwoofer – dual 10” Meyers UMS-IP
- 2 EV I502 ER
- 6 JBL MRX 512M
- 5 EAW VM12
- 4 Galaxy hot spots
- 7 Anchor AN 1001 X
- 1 Anchor AN 1000 self-powered
- 1 Galaxy Audio Hot Spot PAIII self-powered hot spot

Portable Microphone Splitter:

- 1 58 pair Whirlwind splitter with 1 direct out and 2 ISO splits
- 1 15 Pair Wireworks splitter
- 6 15 Pair permanent Mic input mults home run to sound booth from various locations

MICROPHONES

WIRED MICROPHONES:

<u>Manufacturer/Model</u>	<u>Quantity</u>	<u>Manufacturer/Model</u>	<u>Quantity</u>
Shure KSM 9	8	Sennheiser ME 66	4
Shure KSM 141	6	Sennheiser MD421U	3
Shure KSM 32	6		
Shure Beta SM57	9	Earthworks PM 40	2
Shure Beta SM58	7	Electro Voice RE320	2
Shure SM81	5	Electro Voice RV18	3
Shure SM87A	6	Electro Voice RE20	4
Shure Beta 98A	8	Electro Voice DS35	4
Shure Beta 91	2	Whirlwind PB 12	2
Shure Beta 52	2	Beyer M160	4
Shure Beta 181S	4		
Shure Beta 56	6	Audio Tech AT857QMa	3
Shure Beta 57A	8	Audio Tech AT857QMLa	1
Shure WA310	12	Crown PCC 160	8
AKG C414 XLII/ST	2	Crown PZM LP6	3
AKG C214	2	Crown PZM 6RB	4
AKG C535	2	Crown GLM 200	2
Countryman ISOMAX 2	12	B & K 401 I	2
Countryman ISOMAX 2H	12		
Countryman M4HP5RF24EB	6		

WIRELESS MICROPHONES:

There are six (16) channels of Shure ULXD Diversity Receivers, divided into two racks

- 8 ULXD receivers per rack
- 4 handheld transmitters with SM58 heads
- 8 Bodypack transmitters

DIRECT INPUT BOXES:

10	Countryman FET 85	Passive DI
6	Radial Engineering JDI MKIII	Passive DI
4	Radial Engineering JPC	PC DI
2	Whirlwind PCDI	PC DI

BACKSTAGE COMMUNICATIONS

The Amaturro Theatre is equipped with a Clear Com 2 channel intercom system; stations are located in the control booths, spot booths, and in the wings (including the fly rail).

- 1 MS-702 2-Channel Headset/Speaker Main Station
- 7 RS-701 wired belt pack (single channel)
- 1 RS702 wired belt pack (double channel)
- 1 WBS670 Wireless Intercom Base Station
- 6 WTR-670 Wireless belt pack (single channel)

LIGHTING INFORMATION

The Amaturio Theater is equipped with an extensive permanent "house" lighting plot. It comes focused and colored as per that plot. Any refocusing of equipment during the load-in must be restored during the load-out. To obtain copies of lighting plot contact the production offices. Available in PDF, DWG, or hard copy.

CONTROL

- 1 ETC Gio with two fader panels, two LCD monitors
- ETC Sensor3 dimmer racks

POWER DISTRIBUTION

- 2 100 amp 3 phase (1) DSR and (1) DSL
- 1 400 amp 3 phase USR at loading dock w/truck wall ports

FOLLOWSPOTS

- 2 Lycian 1275 Superstar 1.2 (1200w) Followspots located in tech gallery

COMPLETE INVENTORY

The Amaturio Theater has a permanent repertory light plot; therefore most of the inventory is hanging

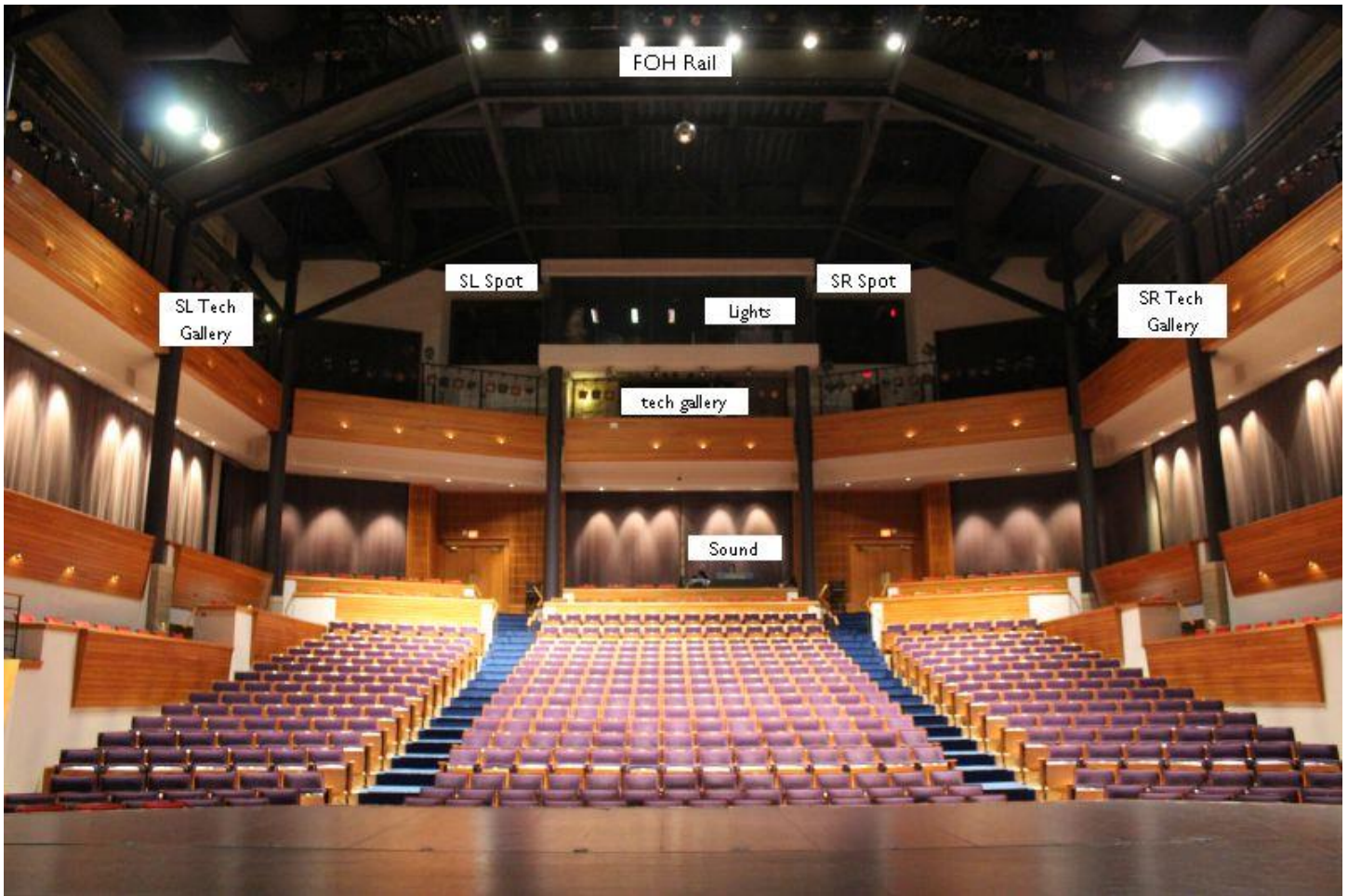
Unit Description	Detail	Total	Hanging	On Rack
Colortran Ellipsoidal 5 deg.	#650-082	14	12	2
Colortran Ellipsoidal 10 deg.	#650-072	49	44	5
Colortran Ellipsoidal 15 deg	#650-052	4	4	0
Colortran Ellipsoidal 20 deg	#650-042	95	90	5
Colortran Ellipsoidal 30 deg	#650-032	111	74	37
Colortran Ellipsoidal 40 deg	#650-022	82	80	2
Colortran Ellipsoidal 50 deg	#650-012	6		6
PAR cans (P64)	Par 64	31	12	19
Colorado LED Wash	Quad 2 Zoom Tour	25	25	0
Elation Moving Light	Satura Spot CMY Pro	5	5	0
Par 56 striplights		17	3	14
Far Cyc		5	5	0
18' booms w/bases		2		
36' Genie personnel lift		1		

ONSTAGE SIDE LIGHT LADDERS

Dead-hung 26'-6" from CL, with a clearance of 10' to the bottom rung. SL/SR Ladders (4 ladders per side, instruments distributed equally to each)

DIMENSIONAL INFORMATION

Curtain line to Technical Gallery	86'
Curtain line to FOH rail	58'
Curtain line to Follow Spot booth	90
Technical Gallery R to L	70'



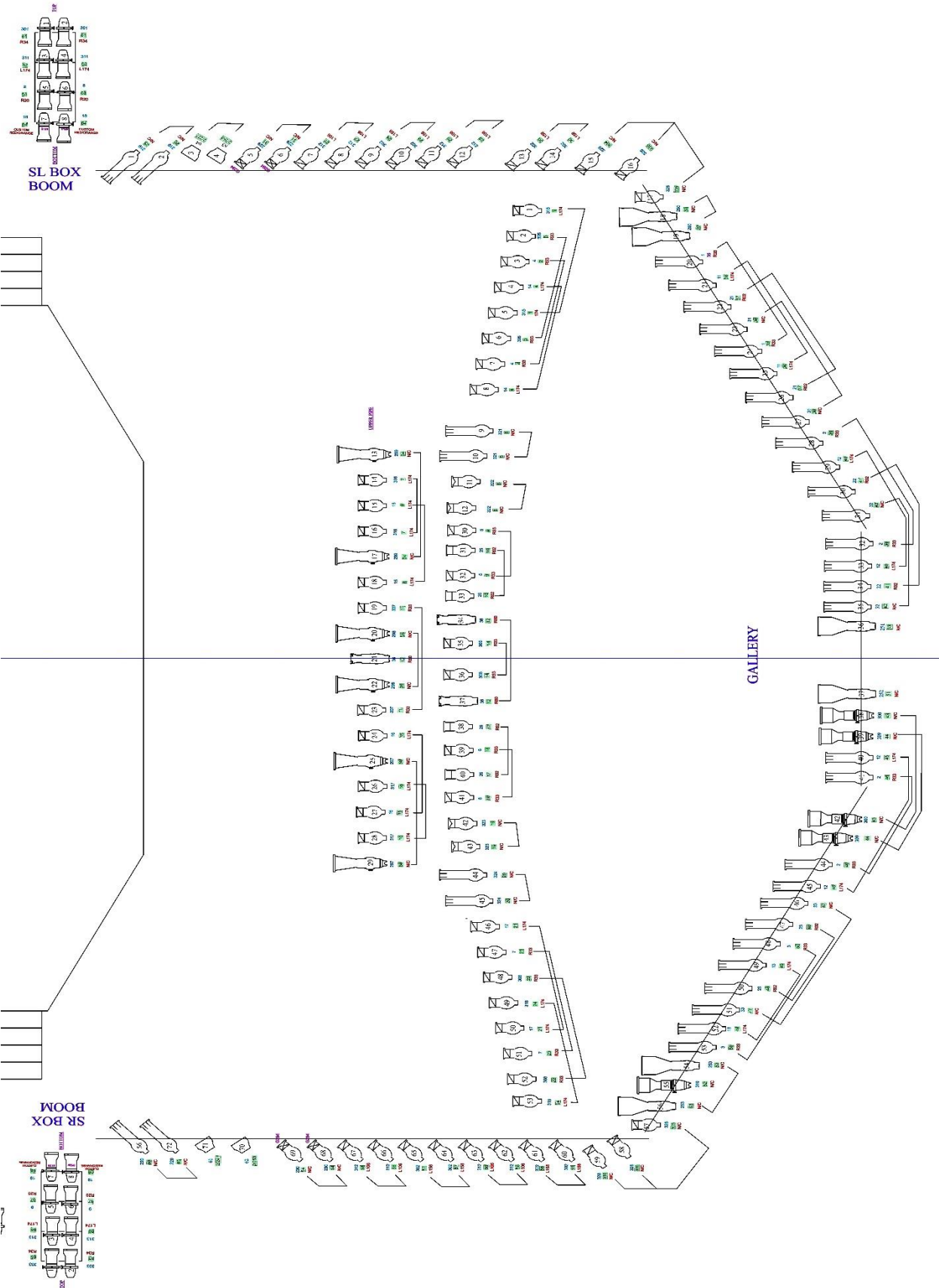
LIGHTING MAGIC SHEET

<u>PINK FOH (fronts)</u> 7 6 5 4 3 2 1	<u>BLUE FOH (fronts)</u> 17 16 15 14 13 12 11	<u>AMBER FOH (fronts)</u> 26 25 23 22 21	<u>n/c FOH (fronts)</u> 33 32 31
<u>BOX BOOM PINK</u> (mainly for apron) 9 8 303 301	<u>BOX BOOM BLUE</u> (mainly for apron) 19 18 313 311	<u>FRONT DARK BLUE</u> <u>WASH</u> 35	<u>LED WASH</u> 56 57 58 59 60 51 52 53 54 55 46 47 48 49 50 41 42 43 44 45 61 64 62 63
<u>MOVERS</u> 73 74 75 71 72	<u>BLUE CYC</u> 282 281 280	<u>RED CYC</u> 285 284 283	<u>AMBER CYC</u> 288 287 286
<u>PINK HI SIDES</u> 90 85 89 84 88 83 87 82 86 81	<u>BLUE HI SIDES</u> 100 95 99 94 98 93 97 92 96 91	<u>BLUE BACKWASH</u> 128 129 130 131 132 133 134 135 136 137 138 139	<u>SHINS (optional)</u> 218 214 217 213 216 212 215 211
<u>LADDER PINK</u> 178 174 177 173 176 172 175 171	<u>LADDER N/C</u> <u>GOBO</u> 188 184 187 183 186 182 185 181	<u>LADDER AMBER</u> 198 194 197 193 196 192 195 191	<u>LADDER</u> <u>LAVENDAR</u> 208 204 207 203 206 202 205 201
<u>APRON RED</u> 312 312	<u>APRON AMBER</u> 302 302	<u>APRON BLUE</u> 318 317 316 315	<u>APRON PINK</u> 305 306 307 308
<u>APRON N/C</u> 321 322 323 324	<u>SOLOS SPOT</u> <u>SPECIALS</u> 297 298 299	<u>MIRROR BALL</u> 220 219	

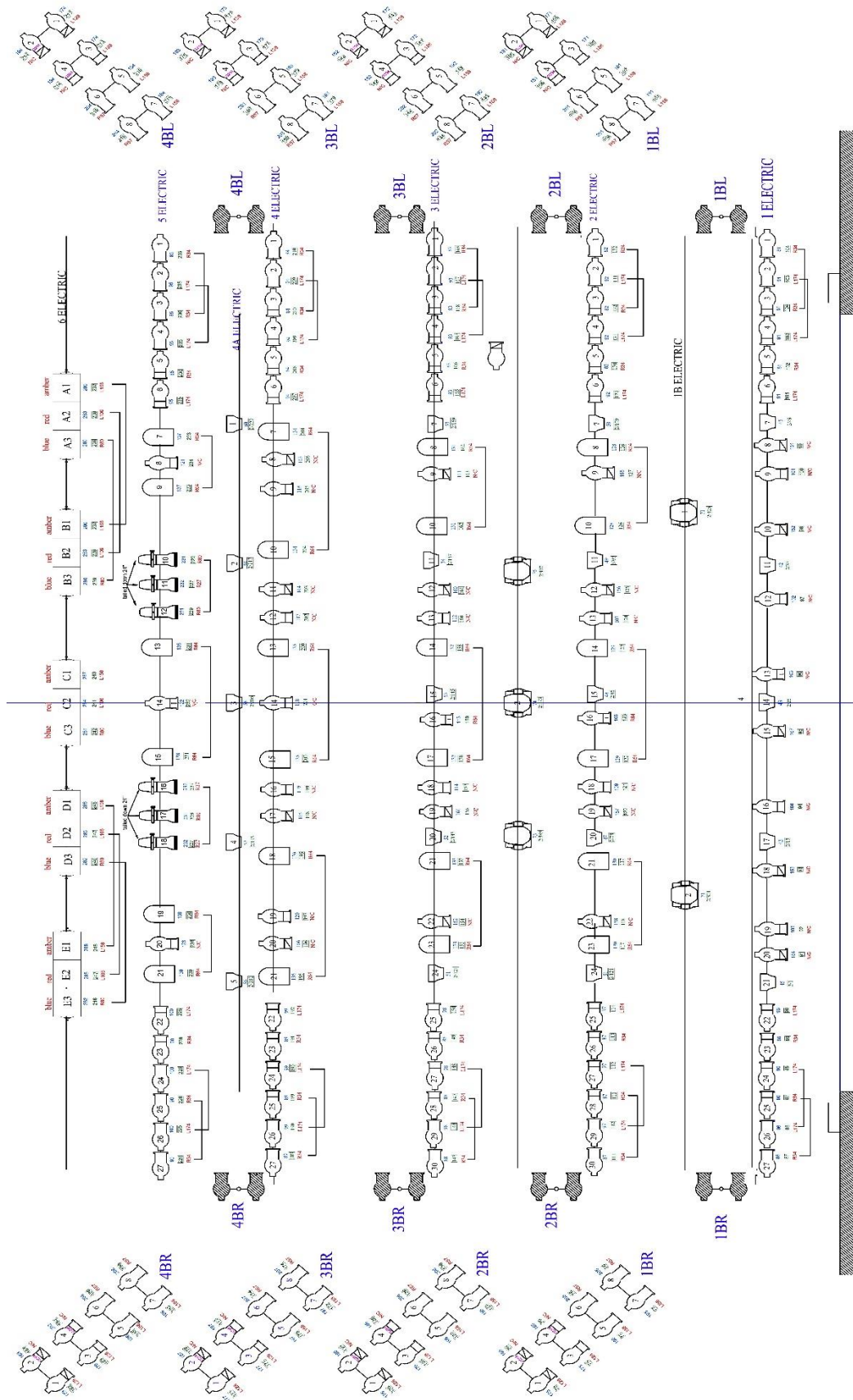
FOCUSABLE UNITS

<u>1ST ELEC</u> 101, 102, 103, 104, 105, 151, 152, 153, 154, 167	<u>2ND ELEC</u> 106, 107, 108, 109, 110, 155, 156, 157, 158	<u>3RD ELEC</u> 111, 112, 113, 114, 115, 159, 160, 161, 162	<u>4TH ELEC</u> 116, 117, 118, 119, 120, 163, 164, 165, 166
<u>5TH ELEC</u> 121, 122, 123			

Lighting Plot: FOH



Lighting Plot: Stage



CIRCUIT LOCATION

CIRCUIT	Location	Notes
1-24	FOH Cove	
25-38	Technical Gallery SL	
39-46	Technical Gallery REAR	
47-60	Technical Gallery SR	
61-64	Box Boom SL	
65-68	Box Boom SR	
69-74	Orchestra Pit	
75-80	Socapex Breakout SL	
81-86	Socapex Breakout SR	
87-92	Socapex Breakout SL	
93-98	Socapex Breakout SR	
99- 104	Socapex Breakout SL	
105-110	Socapex Breakout SL	4'4" from Plaster Line
111-116	Socapex Breakout SR	4'6" from Plaster Line
117-128	Socapex Breakout SR	8' from Plaster Line
129-134	Socapex Breakout SR	9'10" from Plaster Line
135-140	Socapex Breakout SR	10'10" from Plaster Line
141-146	Socapex Breakout SL	13'1" from Plaster Line
147-152	Socapex Breakout SR	13'4" from Plaster Line
153-164	Socapex Breakout SR	16'4" from Plaster Line
165-170	Socapex Breakout SR	18'10" from Plaster Line
171-176	Socapex Breakout SR	19'10" from Plaster Line
177-182	Socapex Breakout SL	22'2" from Plaster Line
183-188	Socapex Breakout SR	22'6" from Plaster Line
189-200	Socapex Breakout SR	25'6" from Plaster Line
201-206	Socapex Breakout SR	28' from Plaster Line
207-212	Socapex Breakout SR	29' from Plaster Line
213-224	Socapex Breakout SL	30' from Plaster Line
225-236	Socapex Breakout SR	30' from Plaster Line
237-242	Socapex Breakout SL	31'6" from Plaster Line
243-248	Socapex Breakout SR	31'6" from Plaster Line
249-254	Fly Gallery SL	
255-260	Fly Gallery SR	
261-264	DSL Wall	
265-268	DSR Wall	
269-272	USL Wall	
273-288	USR Wall	
NON-DIMS		
A,B	FOH Cove and Technical Galleries	
C,D	Fly Galleries SL and SR	
E,F,G,H	DSL, USL, DSR, USR	

ORCHESTRA EQUIPMENT AND CONCERT SHELL

ORCHESTRA EQUIPMENT

96	Wenger Orchestra Chairs
6	Cello Chairs
86	Music Stands w/lights
1	Conductor's Podium and Stand
10	Stools

RISERS: Black skirting is available for risers

10	4'x 8'x 8"h
10	4'x 8'x 16"h
20	4'x 8'x 24"h

STEP UNITS:

2	8" single step units
2	16" step units
2	24" step units

PIANOS (Note: Pianos tuned only by House Tuner Only - tuning not included)

2	9' Steinway Concert Grand Model D
1	7' Steinway Grand Model B
4	Yamaha Uprights

ORCHESTRA CONCERT SHELL:

The Amaturio Theatre is equipped with 13 Wenger acoustical shell walls that can be arranged in a variety of configurations. Each shell piece is 6' wide in approximately 12' high with a 2' outrigger on the rear. Each shell piece is easily moveable with locking casters.



DRESSING ROOM / WARDROBE / SUPPORT SPACES

DRESSING ROOMS:

All dressing rooms are located directly behind the stage, and are accessible from either side. The numbering starts closest to SL, and proceeds across to SR. All rooms are equipped with showers, toilets, mirrors, chairs and costume racks. The smaller dressing rooms have a counter running the length of one long wall, while the larger rooms have counters running along both long walls. Companies working under an AEA contract should use the smaller number for dressing room assignments. There is an audio feed from the stage throughout the area.

Dressing Room #	Number of People	Dimensions
Room #115	6-8 people	8' 6"W x 18' 4"L
Room #116	12-16 people	14' W x 18' 4"L
Room #117	12-16 people	14' W x 18' 4"L
Room #118	6-8 people	8' 6"W x 18' 4"L



WARDROBE ROOM:



There is no dedicated Wardrobe room at the Broward Center, just a small room for minor repairs. Shows booked into the Au-Rene Theatre have priority use of this room.

LAUNDRY ROOM:

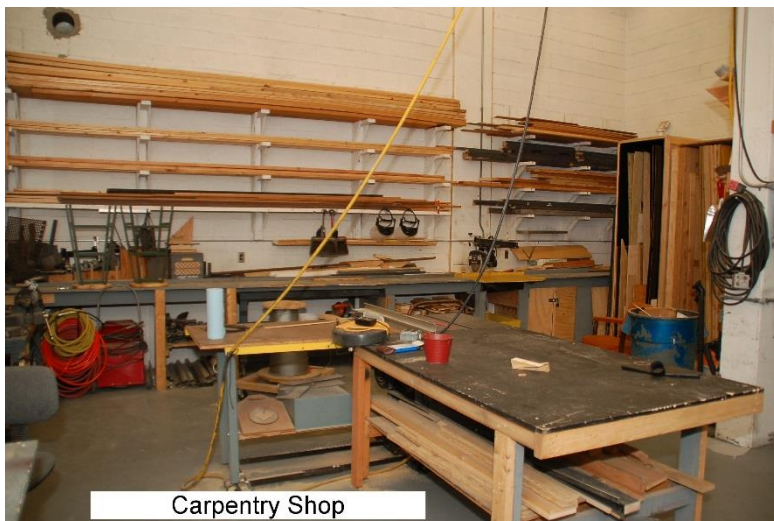
The center has one laundry room to facilitate both theaters. It is located on stage level between the two theater spaces. There are three washers and three dryers in the laundry room, as well as a double sink.

Arrangements must be made in advance, as shows booked into the Au-Rene Theatre have priority use of this room.



CARPENTRY SHOP

Broward Center has a small wood shop for general repairs and limited welding equipment for metal & steel, located in the Au-Rene backstage. Its availability is dependent on activity in the Au-Rene Theatre.



Carpentry Shop

GREEN ROOM / WARM-UP SPACE



The Amaturio Green Room is 35' x 11' 6", and has a commercial grade coffee maker, standard refrigerator/freezer, and a sink. There is an audio feed from the stage, and a CCTV connection (television not included). It can be used as a Catering Room, a Wardrobe Room, a Production Office or a Rehearsal/Warm-up room. It has a section of mirrors and barres.

There are additional mirrors and barres outside of dressing room #118, and in the stage entrance to Up Stage Left.



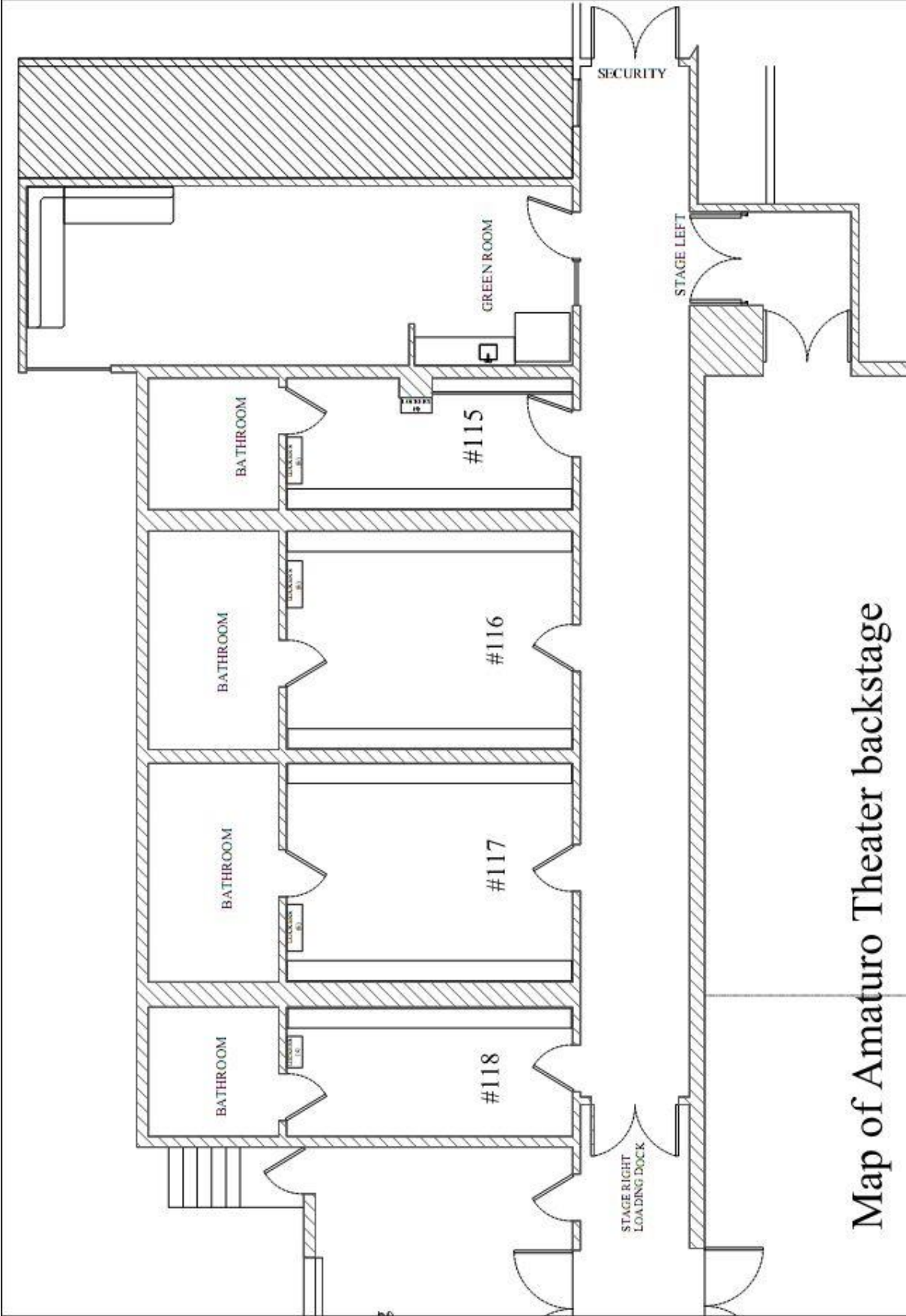
SUPPORT SPACES

The Amaturio Theater is not equipped with office space for clients, but each dressing room, as well as the Green Room, can be equipped with a phone line and a high-speed internet connection. Room #118 has been the traditional favorite for production use, but any of the rooms can set up as an office. Phone and internet connections require advance notice, as the available outside phone lines must be shared with the Au-Rene Theater.

ADDITIONAL RENTAL SPACES

The following space must be reserved in advance, and is subject to availability: The Einstein Room is 36' x 18' and is located next to Au-Rene Green Room. It has no mirrors or bars.

Backstage Map



Map of Amaturo Theater backstage